

# NEWS AND EXTRAS

## Extra Time in the Parks!

The *Extra Magic Hours* Benefit is yours to enjoy as a *Walt Disney World* Resort hotel Guest! Each day, one Disney Theme Park opens an hour early or stays open up to three hours after Park closing\*, offering extended hours of fun at some of our most popular attractions and select Character Greeting locations. For *Extra Magic Hour* details, see "WDW Today" on Channel 19 or your Times Guide and New Information Flyer.

Valid Theme Park ticket and Resort ID required.

Schedule and attractions subject to change without notice.

\*Wristbands are required for evening *Extra Magic Hours* and are available at the Park offering the *Extra Magic Hours* Benefit that same evening. Up to two hours before regular Park closing time, wristbands can be picked up at select locations by presenting a valid Resort ID for each member of your party.

### MAGIC KINGDOM®

**Mornings:** Buzz Lightyear's Space Ranger Spin<sup>1</sup> • Cinderella's Golden Carrousel • Dumbo the Flying Elephant • "it's a small world"  
• Monsters, Inc. Laugh Floor • The Many Adventures of Winnie the Pooh  
• Mickey's PhilharMagic • Peter Pan's Flight • *Space Mountain*® • *Stitch's Great Escape!*<sup>™</sup> • *Tomorrowland*® Indy Speedway • The Haunted Mansion  
**Evenings:** All of the above, plus Big Thunder Mountain • The Magic Carpets of Aladdin • Pirates of the Caribbean

### EPCOT®

**Mornings:** Living with the Land • *Mission: SPACE*®  
• *Soarin'*<sup>™</sup> • Test Track  
**Evenings:** All of the above, plus Honey, I Shrank the Audience  
• Journey Into Imagination With Figment • Norway—Maelstrom  
• O Canada! • The Seas with Nemo & Friends<sup>2</sup> • Gran Fiesta Tour Starring The Three Caballeros. In addition, select shops and restaurants in World Showcase will be open on these evenings.

### DISNEY'S HOLLYWOOD STUDIOS™

**Mornings:** Muppet★Vision 3-D<sup>3</sup> • Star Tours<sup>4</sup> • *Rock 'n' Roller Coaster*®  
Starring Aerosmith • *The Twilight Zone Tower of Terror*<sup>™5</sup>  
**Evenings:** All of the above, plus The Great Movie Ride  
• Voyage of The Little Mermaid

### DISNEY'S ANIMAL KINGDOM® THEME PARK

**Mornings:** DINOSAUR • *Expedition Everest*<sup>™</sup> • *It's Tough to be a Bug!*<sup>6</sup>  
• *Kilimanjaro Safaris*® • *Pangani Forest Exploration Trail*®  
**Evenings:** DINOSAUR • *Expedition Everest* • Festival of the Lion King  
• *It's Tough to be a Bug!*<sup>6</sup> • *Kali River Rapids*® • *Primeval Whirl*®  
• TriceraTop Spin

WALT DISNEY WORLD®



## Let the Dreams Continue!

Since we premiered *The Year of a Million Dreams*, people just like you have seen incredible dreams come true in our Parks every day. In fact, so many wonderful dreams come true, our Guests have wished that this amazing event wouldn't have to end. Well now we're making that dream come true too, and continuing the celebration for one final year.

Of course, the most exciting part of this continuing celebration is the new 2008 Disney Dreams Giveaway, happening each and every day. This year, another million plus dreams will be awarded through a random process during the giveaway.

A Cast Member might invite you to spend that night in the *Cinderella Castle Suite* in the heart of *Magic Kingdom*® Park. You may receive a **DREAM FASTPASS** badge to enjoy some of the most popular Disney attractions with less wait. Other amazing dream-come-true prizes include Disney vacations. And these are but a few of the magical prizes to be given away this year.

NO PURCHASE NECESSARY to enter or win the 2008 Disney Dreams Giveaway. A purchase will not increase your chances of winning. Certain prizes are limited in number and may be depleted at any time during the giveaway. Open only to legal residents of 50 U.S., D.C., Puerto Rico, Canada, Mexico, Australia, Japan & UK. Void elsewhere and where prohibited. Giveaway runs January 1, 2008 – December 31, 2008 (mail-in entries must be postmarked on or between December 19, 2007 & December 31, 2008 & received by January 14, 2009, on a piece of paper or postcard with complete name, address, daytime phone #, birthdate and proper postage sent to P.O. Box 8650, Elmhurst, IL 60126 USA. UK residents only, mail to 2008 Disney Dreams Giveaway, 483 Green Lanes, Suite 200, London N13 4BS, England). Cinderella Castle Suite stay will be awarded most days starting January 1, 2008. It will likely be awarded early in the day, will be for a stay that night and is only available to eligible participants at the Parks, *Disney's Wide World of Sports*® Complex and *Downtown Disney*® area, all in Florida. Some prizes, such as the DREAM FASTPASS badge, are only awarded at certain Theme Parks for use that day. Mail-in winners of prizes that require use on day awarded, such as Cinderella Castle Suite stay and DREAM FASTPASS badge, will receive a prize of comparable value. Approximate retail value of prizes advertised: Cinderella Castle Suite stay US \$587, DREAM FASTPASS badge US \$5 and Disney vacations \$6,500–\$59,275. Prizes range in value from US \$4.76 to US \$87,361. All prize awards are subject to verification. Odds of winning on a given day depend on the number of eligible participants at a selected location or within the mail-in entry pool for the time or date (as applicable) selected. Subject to Official Rules (see [disney.parks.com/2008rules](http://disney.parks.com/2008rules)). Sponsor: Magic Kingdom Productions, Inc., P.O. Box 10000, Lake Buena Vista, FL 32830. For residents of Canada, a mathematical skill-testing question must be correctly answered to win any prize.



Disney's  
**PIRATE *and* PRINCESS**  
P A R T Y

TWO WORLDS. ONE ADVENTURE.

Take your kids on a quest for treasures as they live the life of scurvy pirates and pretty princesses. Fantastic fireworks, a magical parade and special adventure abound. Some of the most popular *Magic Kingdom* attractions will be yours to enjoy as well!

January 21, 26, 29 and February 2, 5

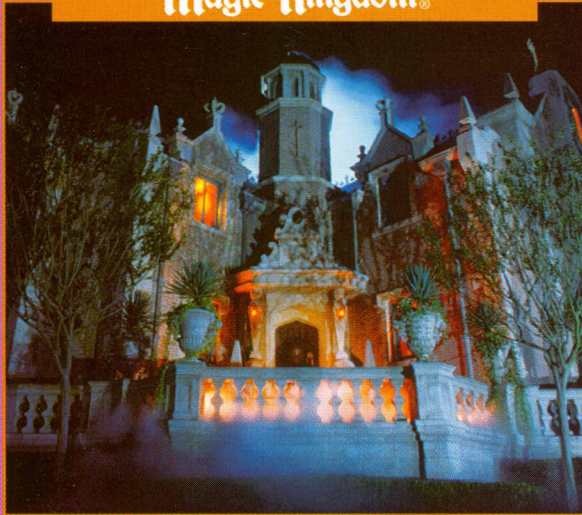
Advance Purchase Price: Ages 10 and up \$43.95 + tax    Day-of-Event Prices: Ages 10 and up \$45.95 + tax  
Ages 3-9    \$37.95 + tax    Ages 3-9    \$39.95 + tax

Call 407-WDW-AHOY for tickets.

**Magic Kingdom.**

Admission to this event requires a separately priced ticket. Tickets are valid during specific event hours only. Advance tickets are for sale up to and including the day prior to the event. Tickets are subject to availability. Entertainment subject to change without notice.

## Magic Kingdom®



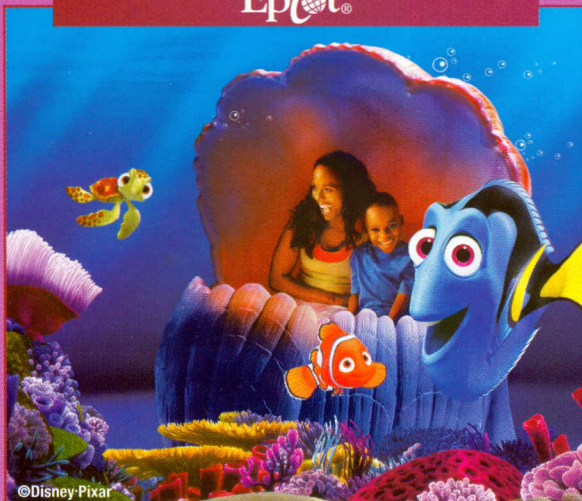
**The Haunted Mansion**—Grim grinning ghosts come out to socialize with all-new digital audio, creative enhancements and haunting new surprises that are sure to lure in that 1,000th happy haunt.

## Disney's ANIMAL KINGDOM®



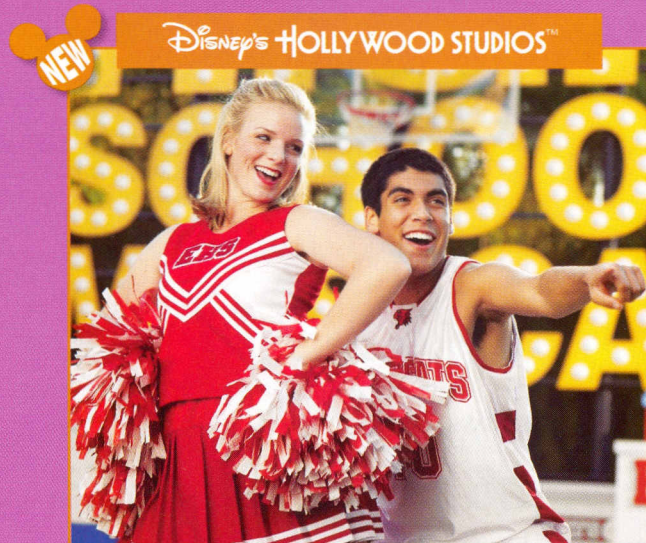
**Finding Nemo—The Musical**—Innovative puppetry, awesome acrobatics and sparkling new songs bring the story inspired by Disney-Pixar's "Finding Nemo" to life in an extraordinary way.

## Epcot®



**The Seas with Nemo & Friends**—Board a "clamobile" and glide along with Dory, Marlin and the gang as they follow Nemo through a wondrous attraction inspired by Disney-Pixar's "Finding Nemo."

## Disney's HOLLYWOOD STUDIOS™



**High School Musical 2: School's Out!**—Catch even more "Wildcat Fever" as the East High crew party through the Park, inviting you to dance, cheer and sing along the way. Inspired by the hit Disney Channel Original Movie, "High School Musical 2."

## Want to soak up some more Disney fun?

### BE SURE TO PURCHASE THE *WATER PARK FUN & MORE* OPTION!

With this great ticket option, you can choose a certain number of visits to *Disney's Typhoon Lagoon Water Park*, *Disney's Blizzard Beach Water Park*<sup>†</sup>, *DisneyQuest*® Indoor Interactive Theme Park, *Downtown Disney*® Pleasure Island nightclubs or *Disney's Wide World of Sports*® Complex.\* Remember, you can purchase great ticket options like the *Water Park Fun & More* Option anytime during your stay!

\*Number of admissions based on the length of your ticket. Water Parks subject to seasonal and weather closures. Age restrictions may apply for access.

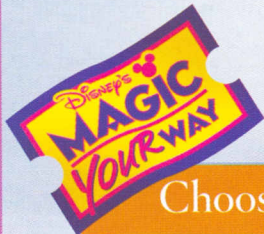
<sup>†</sup>Disney's Blizzard Beach Water Park is closed for refurbishment 1/6-3/8/2008.



Crush 'n' Gusher at *Disney's Typhoon Lagoon Water Park*



Surf Pool at *Disney's Typhoon Lagoon Water Park*



## Choose more great ticket options

### *Park Hopper*® Option\*

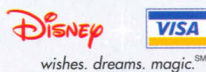
Come and go as you please through all four *Walt Disney World*® Theme Parks on the same day for each day of your ticket.

### *No Expiration* Option\*

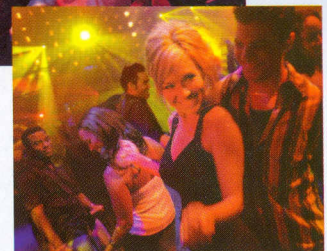
Add this to any *Magic Your Way* Ticket and the unused days never expire!

*Pick up Magic Your Way Tickets in advance at the Guest Services desk or at the Disney merchandise location in the lobby.*

\* Tickets and options must be used within 14 days of first use unless the *No Expiration* Option is purchased. All tickets and options are nontransferable and exclude activities/events separately priced. Certain age restrictions may apply for access to certain facilities. Water Parks subject to seasonal and weather closures.



Have a blast at *DisneyQuest* Indoor Interactive Theme Park



Club hop nonstop at Pleasure Island



Heard the best kept  
**Disney Secret?**  
Visit our Information Centers  
throughout the *Walt Disney World* Resort.

