

DISCOVER

TOKYO

Disney
RESORT

INFORMATION & MAP



WINTER - SPRING 2008 ENGLISH

© Disney

Tokyo Disney Resort—Where dreams come true

TOKYO DISNEY RESORT MAP

Tokyo Disney Resort Official Hotel

Sheraton Grande Tokyo Bay Hotel



Tokyo DisneySea® Park

Tokyo DisneySea Hotel MiraCosta®

Tokyo DisneySea Hotel MiraCosta Guest Parking Entrance

Bus Terminal Annex
For Good Neighbor Hotel and Resort Parking

Tokyo DisneySea Park Main Entrance

Tokyo DisneySea Park Main Entrance

Tokyo DisneySea Bus & Taxi Terminal

Tokyo DisneySea Guest Parking Entrance

Disney Resort Line
Tokyo DisneySea Station

Passenger Cars: ¥2,000
Buses: ¥4,500
Motorcycles: ¥500

Tokyo Disney Resort Welcome Center

Located between JR Maihama Station and Ikspiari Station Level

Disney Hotels Service Counter Hours: 7:30 a.m. - 5 p.m.
Baggage delivery (available until 4 p.m.) and other services exclusively for Guests staying at the Disney Hotels.

Information Counter Hours: 7:30 a.m. - 9 p.m.
General Tokyo Disney Resort information and ticket handling (excluding same day ticket sales).

Street Level

Tokyo Disney Resort Official Hotels Service Counter Hours: 8 a.m. - 4 p.m.
(Sheraton counter open until 8 p.m.)

Baggage delivery and other services for Guests staying at the Tokyo Disney Resort Official Hotels.



Ikspiari Parking Entrance

Disney Ambassador Hotel Parking Entrance

CIRQUE DU SOLEIL®
THEATRE
TOKYO

Grand Opening
October 1, 2008!

Disney Ambassador® Hotel

ms come true

Tokyo Disney Resort Official Hotel
Hotel Okura Tokyo Bay



Tokyo Disney Resort Official Hotel
Hilton Tokyo Bay

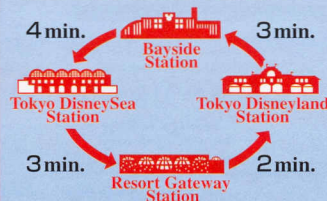


Getting Around the Resort

There are two convenient and fun ways to get around the Resort. Use the Disney Resort Line monorail or a complimentary Disney Resort Cruiser shuttle to get you where you want to go.



Disney RESORT LINE



Fares	Adult	Child
Single Ticket	¥250	¥130
1-Day Pass	¥650	¥330
2-Day Pass	¥800	¥400
3-Day Pass	¥1,100	¥550
4-Day Pass	¥1,400	¥700
11 Tickets	¥2,500	¥1,300

Adult: from age 12 Child: ages 6 to 11
Passnet prepaid cards also accepted.

DISNEY RESORT CRUISER



Route A

Disney Ambassador Hotel



Tokyo Disneyland Bus & Taxi Terminal

Tokyo DisneySea Bus & Taxi Terminal

Route A is limited to Disney Ambassador Hotel Guests only.

Route B

Tokyo Disney Resort Official Hotels

Sunroute Plaza Tokyo, Tokyo Bay Maihama Hotel, Tokyo Bay Hotel Tokyu, Hilton Tokyo Bay, Hotel Okura Tokyo Bay, Sheraton Grande Tokyo Bay Hotel



Bayside Station (Disney Resort Line)

Depending on the time and route, the bus design may be different.

Things to See and Do...

The magic continues!



Disney
AMBASSADOR
HOTEL

Enjoy the Art Deco elegance of 1930s America with a Disney touch.



TOKYO DISNEYSEA
HOTEL
MIRACOSTA

Relax in the splendor and comfort of grand southern European style.



TOKYO DISNEYLAND HOTEL

Grand Opening on July 8, 2008!

A luxurious and elegant hotel designed in the opulent Victorian style will open in front of Tokyo Disneyland for a truly unforgettable stay at the Resort.

Reservations accepted from Jan. 8, 2008

Tokyo Disney Resort Official Hotels

World-class hotels located in Tokyo Disney Resort.



Sunroute Plaza Tokyo
Phone: 047-355-1111



Tokyo Bay Maihama Hotel
Phone: 047-355-1222



Tokyo Bay Hotel Tokyo
Phone: 047-355-2411



Hilton Tokyo Bay
Phone: 047-355-5000



Hotel Okura Tokyo Bay
Phone: 047-355-3333



Sheraton Grande
Tokyo Bay Hotel
Phone: 047-355-5555

Tokyo Disney Resort Partner Hotels

Located within an easy commute to the Resort.



Palm & Fountain
Terrace Hotel*
Phone: 047-353-1234



Hotel Emion
Tokyo Bay
Phone: 047-304-2727



Oriental Hotel
Tokyo Bay
Phone: 047-350-8111



Urayasu
Brighton Hotel
Phone: 047-355-7777



Mitsui Garden Hotel
PRANA Tokyo Bay
Phone: 047-382-3331

*For reservations, please contact the Tokyo Disney Resort Reservations Center.

● Tokyo Disney Resort Park Tickets

Ticket Type	Prices		
	Adult (Ages 18+)	Junior (Ages 12-17)	Child (Ages 4-11)
Single-Day Passports			
1-Day Passport Enjoy 1 day at either Tokyo Disneyland or Tokyo DisneySea.	¥5,800	¥5,000	¥3,900
Senior Passport Enjoy 1 day at either Tokyo Disneyland or Tokyo DisneySea. For Guests ages 60 and over.	¥5,100	—	—
Multi-Day Passports			
2-Day Passport Enjoy Tokyo Disneyland and Tokyo DisneySea for 1 day each on 2 consecutive days. Select Parks in advance.	¥10,000	¥8,800	¥6,900
3-Day Magic Passport Enjoy Tokyo Disneyland and Tokyo DisneySea for 1 day each on 2 consecutive days. Select Parks in advance. Visit either Park or both on the third consecutive day.	¥12,900	¥11,500	¥8,900
4-Day Magic Passport Enjoy Tokyo Disneyland and Tokyo DisneySea for 1 day each on 2 consecutive days. Select Parks in advance. Visit either Park or both on the third and fourth consecutive days.	¥15,000	¥13,500	¥10,500
Special Value Passports			
After 6 PM Passport Valid after 6 PM on weeknights except national holidays at either Tokyo Disneyland or Tokyo DisneySea.	¥3,100		
Starlight Passport Valid from 3 PM on most weekends at either Tokyo Disneyland or Tokyo DisneySea.	¥4,700	¥4,100	¥3,200
Annual Passports			
Tokyo Disneyland Annual Passport Tokyo DisneySea Annual Passport Valid for multiple visits to Tokyo Disneyland or Tokyo DisneySea for one year from the date of issue. Good for admission to either Tokyo Disneyland or Tokyo DisneySea. Not valid on days with special operating hours. For use by the person to whom the Passport was issued only.	¥45,000	¥31,000	
2-Park Annual Passport Valid for multiple visits to Tokyo Disneyland and Tokyo DisneySea for one year from the date of issue. Good for admission to both Parks on the same day. Not valid on days with special operating hours. For use by the person to whom the Passport was issued only. You may not use this Passport when Park admission is being restricted.	¥75,000	¥50,000	

- Children age 3 and under are admitted free to the Parks.
- The above Passports are valid for one year from the date of issue.
- On days when Park attendance is high, Passport sales may be suspended.



Upgrade Your Passport!

Want to spend another day at the Parks? It's easy to upgrade your Passport to a higher Multi-Day Passport. Simply pay the difference between your Passport and the Multi-Day Passport you want.

Where to upgrade your Passport

At Tokyo Disneyland: Guest Relations Window (inside the Park)
Main Entrance Information & Ticket Booths
Group Sales Window
Guest Relations Window

At Tokyo DisneySea: Guest Relations (inside the Park)
Main Entrance Information & Ticket Booths
Group Sales

At Tokyo Disney Resort Welcome Center (Station Level)

At Disney Ambassador Hotel or Tokyo DisneySea Hotel MiraCosta

(for Guests staying at these hotels only)

Concerning Upgrades

- Upgrades cannot be made on days of high attendance (including days when high attendance is projected).
- Some types of Passports cannot be upgraded.
- Passports that have already been used cannot be upgraded.
- To upgrade a Passport after you have entered a Park, please visit the Guest Relations Window in Tokyo Disneyland or Guest Relations in Tokyo DisneySea.
- After you exit the Park, you may upgrade a Multi-Day Passport as long as there is at least one day left unused. (1-Day Passports cannot be upgraded after you exit the Park.)
- The locations handling upgrades may be open at different times. Locations in the Park are open only during Park operating hours.
- For more details, please ask the Cast Member at the location handling upgrades.

Tokyo Disney Resort Highlights — So Many Fun Things



Always magical and always fun, visit the place where Disney dreams come true — the Kingdom of Dreams and Magic!



Tokyo Disneyland
Electrical Parade
Dreamlights
Presented by
Nihon Unisys, Ltd.
© Disney / Pixar

World Bazaar

A nostalgic recreation of small town America in the early 20th century with quaint shops and restaurants.

Adventureland

An exotic land of tropical jungles and enchanted Tiki gods where, among other adventures, you can witness swashbuckling pirates raid a port town.

Westernland

America's frontier days come to life as you sail down a lazy river, board the wildest ride in the West or take in a fun-filled frontier revue.

Critter Country

This cozy land is home to Brer Rabbit, Brer Fox and other critters from old folktales told in America's South.

Fantasyland

Cinderella, Pinocchio, and even Winnie the Pooh are waiting for you in this land of enchanting fairy tales and Disney stories.

Toontown

This wacky land of cartoon fun is where Mickey Mouse, Minnie Mouse, Donald Duck, and other Disney characters live, work and play.

Tomorrowland

A light-hearted look at the exciting possibilities of space and the future, from time travel and shrinking machines to flights to other galaxies.



Where Adventure and Imagination Set Sail

Come and explore seven ports of call filled with breathtaking shows, unique attractions, fun shopping, and fine dining.

Mediterranean Harbor

This southern European port town consists of a charming fishing village, romantic waterways, and a magnificent fortress from the Golden Age of Exploration.

American Waterfront

Two distinct harbors, bustling New York and quaint Cape Cod, recreate the excitement and charm of early 20th-century America.

Port Discovery

A futuristic marina across the horizons of time, this port offers adventures on the water and into the sky on a flying weather laboratory.

Lost River Delta

In this Central American jungle, the ruins of an ancient temple draw explorers and adventurers seeking riches or even the legendary Fountain of Youth.

Arabian Coast

The world of *The Arabian Nights* comes to life in this port with the Genie from Disney's *Aladdin* and Sindbad the Sailor.

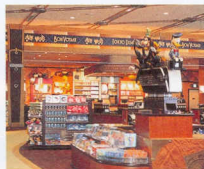
Mermaid Lagoon

Ariel and her friends from Disney's *The Little Mermaid* welcome one and all to this fantasy-filled playground under the sea.

Mysterious Island

The volcanic caldera of this island hides the secret base of Captain Nemo where explorers can descend deep into the ocean or below the Volcano.

The grandest Disney shop in Japan!
Choose from a splendid selection of
fantastic Disney character merchandise.



Open daily 7:30 a.m. to
11 p.m. Shop hours vary
with Park operation hours.



Enjoy nine themed zones
containing a total of 140
shops and restaurants, a 16-
screen multiplex cinema and
a unique children's play and
care center.

Tokyo Disney Resort Good Neighbor Hotels

14 hotels located throughout metropolitan Tokyo.



Chiba / Makuhari Area

- Keisei Hotel Miramare _____ 043-222-2111
- Hotel Springs Makuhari _____ 043-296-3111
- Hotel New Otani Makuhari _____ 043-297-7777

Koto / Sumida Area

- Dai-Ichi Hotel Ryogoku _____ 03-5611-5211
- Tobu Hotel Levant Tokyo _____ 03-5611-5511
- Hotel East 21 Tokyo _____ 03-5683-5683

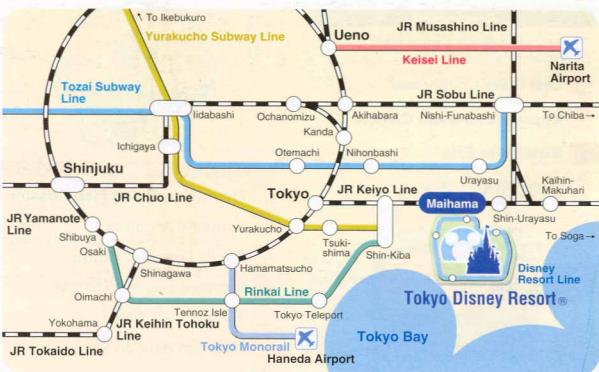
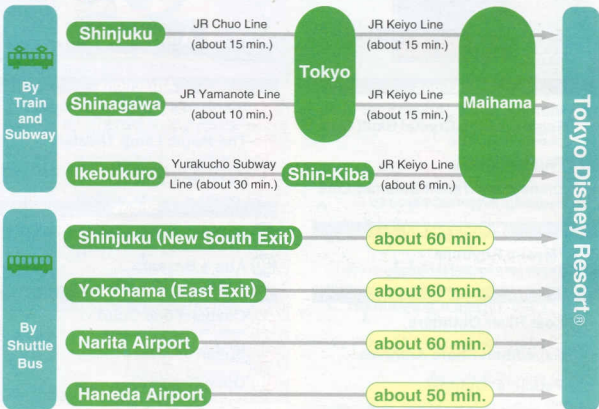
Daiba / Ariake Area

- Tokyo Bay Ariake Washington Hotel _____ 03-5564-0111
- Le Meridien Grand Pacific Tokyo _____ 03-5500-6711
- Hotel Nikko Tokyo _____ 03-5500-5500

Shinagawa / Shinjuku / Chiyoda Area

- Grand Prince Hotel New Takanawa _____ 03-3442-1111
- Le Meridien Pacific Tokyo _____ 03-3445-6711
- Akasaka Excel Hotel Tokyo _____ 03-3580-2311
- Keio Plaza Hotel Tokyo _____ 03-3344-0111
- Hotel Metropolitan Edmont _____ 03-3237-1111

ACCESS



www.tokyodisneyresort.co.jp

Tokyo Disney Resort Information Center

Phone: 0570-00-8632

This number cannot be used when calling from some cell phones, IP phones and international numbers. If your call does not go through, please call Tokyo Disney Resort Guest Relations Center (see below).

•Service available 9:00 a.m. to 7:00 p.m. •Assistance available in English and Japanese.

Tokyo Disney Resort Reservations Center

Phone: 045-683-3333

- Hotel reservations and other reservations for Guests who have made hotel reservations through the Reservations Center can be made from 9:00 a.m. to 9:00 p.m.
- Other reservations and restaurant information are available from 10:00 a.m. to 9:00 p.m.
- Assistance available in English and Japanese.

For Comments: Tokyo Disney Resort Guest Relations Center

Phone: 047-310-0733

•Service available 9:00 a.m. to 6:00 p.m. •Assistance available in English and Japanese.

1-1 Maihama, Urayasu-shi, Chiba-ken, 279-8511, Japan

Tokyo Disneyland

GUIDE MAP

Guest Services

- Main Street House
- Guided Tours
- The East Gate Guest Reception
- Guest Relations Window
- Guest Relations Window
- Group Sales Window
- Park Information Board
- Lost Children
- Baby Center
- Toontown Baby Center
Hosted by Meiji Dairies Corporation
- Stroller & Wheelchair Rentals
Hosted by The Dai-ichi Mutual Life Insurance Company
- First Aid
Please see a Cast Member about entering first aid facilities other than Central First Aid.
- Restrooms
- Wheelchair-accessible Restrooms
- Wheelchair-accessible Restroom (with bed)
- Storage Lockers
- Sumitomo Mitsui Banking Corporation
- Credit Card Cash Advance Service
- Home Delivery Service
Hosted by Nippon Express Co., Ltd.
- Promenade Gifts
- Promenade Gifts East
- Digital Photo Express
(Digital media and film processing)
- Photo Express
(Film processing)
- Photo Garden
- Pet Club
- Picnic Area
- Carriage House Refreshments
- Disney's FASTPASS®
- Boarding restrictions apply
- Restaurants offering Priority Seating
- ... Inside the Park
- ... Outside the Park

WORLD BAZAAR



WORLD BAZAAR

Attractions

- 1 Penny Arcade
- 2 The Disney Gallery
- 3 Omnibus

Shops

- 1 World Bazaar Confectionery
- 2 Grand Emporium
- 3 Main Street Daily
- 4 Camera Center
- 5 Town Center Fashions
- 6 Harrington's Jewelry & Watches
- 7 Pastry Palace
Hosted by Juchheim's Co., Ltd.
- 8 Toy Station
- 9 Magic Shop
- 10 House of Greetings
- 11 Victoria's Jewelry Box
Closed permanently Nov. 16, 2007.
- 12 Silhouette Studio
- 13 The Disney Gallery
- 14 Disney & Co.
- 15 The Home Store

Restaurants

- 1 Eastside Cafe
- 2 Center Street Coffeehouse
Hosted by UCC Ueshima Coffee Co., Ltd.
- 3 Restaurant Hokusai
- 4 Ice Cream Cones
Hosted by Meiji Dairies Corporation
- 5 Sweetheart Cafe
Hosted by Meiji Dairies Corporation
- 6 Refreshment Corner
Hosted by Coca-Cola (Japan) Company, Ltd.
- 7 Great American Waffle Co.

WESTERNLAND

Attractions

- 9 Westernland Shootin' Gallery
- 10 Country Bear Theater
Presented by House Foods Corporation
- 11 The Diamond Horseshoe
Presented by Prima Meat Packers, Ltd.
- 12 Mark Twain Riverboat
- 13 Big Thunder Mountain
Presented by The Dai-ichi Mutual Life Insurance Company
- 14 Tom Sawyer Island Rafts

ADVENTURELAND

Attractions

- 4 Pirates of the Caribbean *
Presented by Kirin Brewery / Kirin Beverage
- 5 Jungle Cruise
Presented by NIPPON OIL / ENEOS
- 6 Western River Railroad
Presented by TOMY Company, Ltd.
- 7 Swiss Family Treehouse
Presented by Juchheim's Co., Ltd.
- 8 The Enchanted Tiki Room
Now Playing "Get the Fever!"
Presented by Shinko Securities Co., Ltd.

Shops

- 16 The Golden Galleon
- 17 Pirate Treasure
- 18 Cristal Arts
- 19 La Petite Parfumerie
- 20 Party Gras Gifts
- 21 Chiba Traders — Arts and Crafts
- 22 Safari Trading Company
- 23 Tiki Tropic Shop
- 24 Adventureland Bazaar
- 25 Candy Wagon

Restaurants

- 8 Royal Street Veranda
Hosted by Kirin Brewery / Kirin Beverage
- 9 Blue Bayou Restaurant
- 10 Café Orléans
- 11 The Gazebo
- 12 Crystal Palace Restaurant
Hosted by Meiji Dairies Corporation
- 13 Polynesian Terrace Restaurant
Hosted by Kikkoman Corporation
- 14 Parkside Wagon
- 15 Boiler Room Bites
- 16 China Voyager
- 17 Squeezer's Tropical Juice Bar
- 18 Fresh Fruit Oasis
- 19 The Skipper's Galley

Shops

- 26 Frontier Woodcraft
- 27 Western Wear
- 28 General Store
- 29 Westernland Picture Parlor
- 30 Trading Post
- 31 Country Bear Bandwagon

Restaurants

- 20 Plaza Pavilion Restaurant
Hosted by Prima Meat Packers, Ltd.
- 21 Pecos Bill Cafe
- 22 Slue Foot Sue's Diamond Horseshoe
Hosted by Prima Meat Packers, Ltd.
- 23 Mile Long Bar
Hosted by House Foods Corporation
- 24 Hungry Bear Restaurant
Hosted by House Foods Corporation
- 25 Lucky Nugget Cafe
- 26 The Canteen
- 27 Chuck Wagon



CRITTER COUNTRY

Attractions

- 15 Splash Mountain
- 16 Beaver Brothers Explorer Canoes

FANTASYLAND

Some shops and restaurants offer priority seating. Attractions and entertainment are subject to change without notice. Major credit cards are accepted throughout the Park, except at some carts and vendors. Not accepted for purchasing stamps.



Restaurants

- 20 Plaza Pavilion Restaurant
Hosted by Prima Meat Packers, Ltd.
- 21 Pecos Bill Cafe
- 22 Slue Foot Sue's Diamond Horseshoe
Hosted by Prima Meat Packers, Ltd.
- 23 Mile Long Bar
Hosted by House Foods Corporation
- 24 Hungry Bear Restaurant
Hosted by House Foods Corporation
- 25 Lucky Nugget Cafe
- 26 The Canteen
- 27 Chuck Wagon

CINDERELLA COUNTRY

Attractions

- 15 Splash Mountain **FP** *
- 16 Beaver Brothers Explorer Canoes *

Shops

- 32 Hoot & Holler Hideout
- 33 Splashdown Photos
Hosted by FUJIFILM Corporation

Restaurants

- 28 Grandma Sara's Kitchen
- 29 Rakey's Raccoon Saloon

Fantasyland

Attractions

- 17 Peter Pan's Flight *
- 18 Snow White's Adventures *
- 19 The Mickey Mouse Revue
- 20 Pinocchio's Daring Journey *
- 21 Dumbo The Flying Elephant *
- 22 Castle Carrousel *
- 23 Haunted Mansion **FP**
- 24 It's A Small World **FP**
Presented by Sogo Co., Ltd.
Disney's FASTPASS available Nov. 3, 2007 to Jan. 4, 2008.
- 25 Alice's Tea Party
Presented by Mitsui Home Co., Ltd.
- 26 Pooh's Hunny Hunt **FP** *

Shops

- 34 Fantasy Gifts
- 35 The AristoCats
- 36 The Glass Slipper
- 37 Baby Mine
- 38 Fantasyland Camera Shop **PE**
Hosted by FUJIFILM Corporation
- 39 The Mad Hatter
- 40 Pleasure Island Candies
- 41 Stromboli's Wagon
- 42 Pooh Corner

Restaurants

- 30 Troubadour Tavern
- 31 Captain Hook's Galley
- 32 Queen of Hearts Banquet Hall
- 33 Cleo's
- 34 Village Pastry

Toontown

Attractions

- 27 Roger Rabbit's Car Toon Spin *
- 28 Minnie's House
- 29 Mickey's House and Meet Mickey
- 30 Chip 'n Dale's Treehouse
- 31 Gadget's Go Coaster *
- 32 Donald's Boat
- 33 Goofy's Bounce House *
- 34 Toon Park
- 35 Jolly Trolley

Shops

- 43 Toontown Delivery Company
- 44 Gag Factory / Toontown Five & Dime

Restaurants

- 35 Dinghy Drinks
- 36 Toon Pop
- 37 Out of Bounds Ice Cream
- 38 Pop-A-Lot Popcorn
- 39 Huey, Dewey and Louie's Good Time Cafe
- 40 Daisy's Snack Wagon
- 41 Mickey's Trailer
- 42 Goofy's Drink Stand

TOMORROWLAND

Attractions

- 36 Star Tours *
Presented by Panasonic
- 37 Space Mountain **FP** *
Presented by Coca-Cola (Japan) Company, Ltd.
- 38 Buzz Lightyear's Astro Blasters
Presented by FUJIFILM Corporation
- 39 MicroAdventure! **FP**
Presented by JCB
- 40 Starcade
Closed permanently Nov. 15, 2007.
- 41 StarJets *
Presented by Japan Airlines
- 42 Grand Circuit Raceway *
Presented by Bridgestone Corp.
- 43 Showbase
Presented by Mitsui Fudosan Co., Ltd.

Shops

- 45 Cosmic Encounter
- 46 Planet M
- 47 ImageWorks
- 48 Stellar Sweets
- 49 Solar Ray's Light Supplies

Restaurants

- 43 Plaza Restaurant
- 44 Soft Landing
Hosted by Meiji Dairies Corporation
- 45 Pan Galactic Pizza Port
- 46 Tomorrowland Terrace
Hosted by Coca-Cola (Japan) Company, Ltd.
- 47 Space Place FoodPort
- 48 The Popping Pod
- 49 Lite Bite Satellite

Some shops and restaurants may be closed depending on the season, the weather, or the time of day. Attractions and entertainment programs may be suspended or cancelled without prior notice.

Major credit cards are accepted throughout the Park, except at some carts and vendors. Not accepted for purchasing stamps.

English language guide books are available at the ticket booths, the Group Sales Window, Main Street House (Tokyo Disneyland) and Guest Relations (Tokyo DisneySea).

*Outside the Park

TOKYO DisneySEA® GUIDE MAP

Guest Services

- Guest Relations
- Guided Tours
- Tokyo DisneySea Information
- Group Sales
- Park Information Board
- Lost Children
- Baby Center
Hosted by Meiji Dairies Corporation
- Nursing Mother's Lounge only.
- Stroller & Wheelchair Rentals
Hosted by The Dai-ichi Mutual Life Insurance Company
- First Aid
Please see a Cast Member about entering first aid facilities other than Central First Aid.
- Restrooms
- Wheelchair-accessible Restroom (with bed)
- Storage Lockers
- Card Banking
(Sumitomo Mitsui Banking Corporation)
- Home Delivery Service
Hosted by Nippon Express Co., Ltd.
- Parkway Gifts South Parkway Gifts North
- Digital Photo Express
(Digital media and film processing)
- Photo Express
(Film processing)
- Photo Terrace
- Pet Club
- Picnic Area
- Disney's FASTPASS®
- * Boarding restrictions apply
- Restaurants offering Priority Seating
- Inside the Park
- Outside the Park



Attractions

- 1 DisneySea Transit Steamer Line
Presented by NIPPON OIL / ENEOS
- 2 Venetian Gondolas
Presented by Juchheim's Co., Ltd.
- 3 Fortress Explorations
Presented by Nihon Uniyas, Ltd.

Entertainment

- 1 "The Legend of Mythica"
Presented by Kodansha Publishers, Ltd.
- 2 "BraviSEAmo!"
Presented by NTT DoCoMo, Inc.

Shops

- 1 Valentina's Sweets
- 2 Emporio
- 3 Galleria Disney
- 4 Fotografica PE PE
- 5 Il Postino Stationery
- 6 Nicolo's Workshop
- 7 Figaro's Clothiers
- 8 Merchant of Venice Confections
- 9 Venetian Carnival Market
- 10 Romeo's Watches & Jewelry
- 11 Juliet's Collections & Treasures
- 12 Miramare
- 13 Piccolo Mercato
- 14 Splendido
- 15 Regalini
- 16 Rimembranze

Restaurants

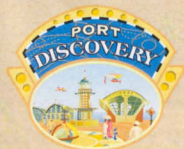
- 1 Cafe Portofino
Hosted by UCC Ueshima Coffee Co., Ltd.
- 2 Zambini Brothers' Ristorante
Hosted by Meiji Dairies Corporation
- 3 Mamma Biscotti's Bakery
Hosted by UCC Ueshima Coffee Co., Ltd.
- 4 Ristorante di Canaletto PS
- 5 Gondolier Snacks
- 6 Magellan's PS
- 7 Magellan's Lounge
- 8 Refrescos

Shops

- A MickeyAngelo Gifts
- B Minnie Lisa Sundries

Restaurants

- C Oceano PS
- D Silk Road Garden PS
- E BellaVista Lounge PS



Attractions

- 8 StormRider FP*
- 9 Aquatopia*
- 10 DisneySea Electric Railway
Presented by TOMY Company, Ltd.

Shop

- 23 Discovery Gifts
- 24 Skywatcher Souvenirs

Restaurants

- 20 Horizon Bay Restaurant
- 21 Seaside Snacks
- 22 Breezeway Bites



Attractions

- 4 Tower of Terror FP*
- 5 Big City Vehicles
- 6 DisneySea Electric Railway
Presented by TOMY Company, Ltd.
- 7 DisneySea Transit Steamer Line
Presented by NIPPON OIL / ENEOS

Entertainment

- 3 "Big Band Beat"
(Broadway Music Theatre presented by Japan Airlines)
- 4 "Over the Waves"
(Dockside Stage presented by Sogo Co., Ltd.)
- 5 "Donald's Boat Builders"
(Cape Cod Cook-Off hosted by Coca-Cola (Japan) Company, Limited)

Shops

- 17 McDuck's Department Store
- 18 Steamboat Mickey's PE
- 19 Newsie's Novelties
- 20 Harborside Souvenirs
- 21 Aunt Peg's Village Store
- 22 Tower of Terror Memorabilia

Restaurants

- 9 S.S. Columbia Dining Room PS
Hosted by Kirin Brewery / Kirin Beverage
- 10 The Teddy Roosevelt Lounge
Hosted by Kirin Brewery / Kirin Beverage
- 11 Restaurant Sakura PS
Hosted by Kikkoman Corporation
- 12 Sailing Day Buffet PS
Hosted by Yamazaki Baking Co., Ltd.
- 13 New York Deli
Hosted by Nichirei Foods, Inc.
- 14 Cape Cod Cook-Off
Hosted by Coca-Cola (Japan) Company, Ltd.
- 15 Liberty Landing Diner
- 16 Barnacle Bill's
Closed for the present.
- 17 Papadakis Fresh Fruit
- 18 High Tide Treats
- 19 Delancey Catering

Where Adventure and Imagination Set Sail



Some shops and restaurants may be closed depending on the season, the weather, or the time of day. Attractions and entertainment programs may be suspended or cancelled without prior notice.

Major credit cards are accepted throughout the Park, except at some carts and vendors. Not accepted for purchasing stamps.

English Main S

Adventure and Imagination Set Sail



Some shops and restaurants may be closed depending on the season, the weather, or the time of day. Attractions and entertainment programs may be suspended or cancelled without prior notice.

Major credit cards are accepted throughout the Park, except at some carts and vendors. Not accepted for purchasing stamps.

English language guide books are available at the ticket booths, the Group Sales Window, Main Street House (Tokyo Disneyland) and Guest Relations (Tokyo DisneySea).

Disney's FASTPASS Save Time to Spend Time

This free service allows Guests to enjoy other areas of the Park instead of standing in line for an attraction. During the time indicated on their FASTPASS ticket, Guests can return to the attraction and enter after only a minimal wait.

PS/ Priority Seating
 Use Priority Seating to be seated with a minimal wait. Please pick up a seating time card at the restaurant and then return at the appointed time. Note that seating time cards are limited in number, and wait time may vary.



- Attractions**
- 11 Indiana Jones: Adventure: Temple of the Crystal Skull **FP***
 - 12 Raging Spirits **FP***
 - 13 DisneySea Transit Steamer Line Presented by NIPPON OIL / ENEOS

Entertainment

- 6 "Mystic Rhythms" (Hangar Stage presented by Bridgestone Corp.)

- Shops**
- 25 Lost River Outfitters
 - 26 Expedition Photo Archives
 - 27 Peddlers' Outpost
 - 28 Lookout Traders

- Restaurants**
- 23 Yucatan Base Camp Grill Hosted by Prima Meat Packers, Ltd.
 - 24 Lost River Cookhouse
 - 25 Miguel's El Dorado Cantina
 - 26 Expedition Eats
 - 27 Tropic Al's



- Attractions**
- 17 Journey to the Center of the Earth **FP***
 - 18 20,000 Leagues Under the Sea **FP** Presented by Coca-Cola (Japan) Company, Ltd.

Shop

- 31 Nautilus Gifts

- Restaurants**
- 31 Vulcania Restaurant
 - 32 Nautilus Galley
 - 33 Refreshment Station



- Attractions**
- 14 Sindbad's Storybook Voyage Presented by Nippon Express Co., Ltd.
 - 15 The Magic Lamp Theater **FP** Presented by FUJIFILM Corporation
 - 16 Caravan Carousel

Shops

- 29 Agrabah Marketplace
- 30 Abu's Bazaar

- Restaurants**
- 28 Casbah Food Court Hosted by House Foods Corporation
 - 29 Sultan's Oasis
 - 30 Open Sesame



- Attractions**
- 19 Flounder's Flying Fish Coaster*
 - 20 Scuttle's Scooters*
 - 21 Ariel's Greeting Grotto
 - 22 Mermaid Lagoon Theater **FP**
 - 23 Jumpin' Jellyfish*
 - 24 Blowfish Balloon Race*
 - 25 The Whirlpool
 - 26 Ariel's Playground

Shops

- 32 Grotto Photos & Gifts
- 33 Sea Turtle Souvenirs
- 34 Mermaid Memories
- 35 The Sleepy Whale Shoppe
- 36 Mermaid Treasures
- 37 Kiss de Girl Fashions **PE**

- Restaurants**
- 34 Grotto Goodies
 - 35 Sebastian's Calypso Kitchen