



遊就館

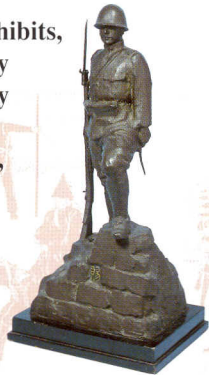
YUSHUKAN



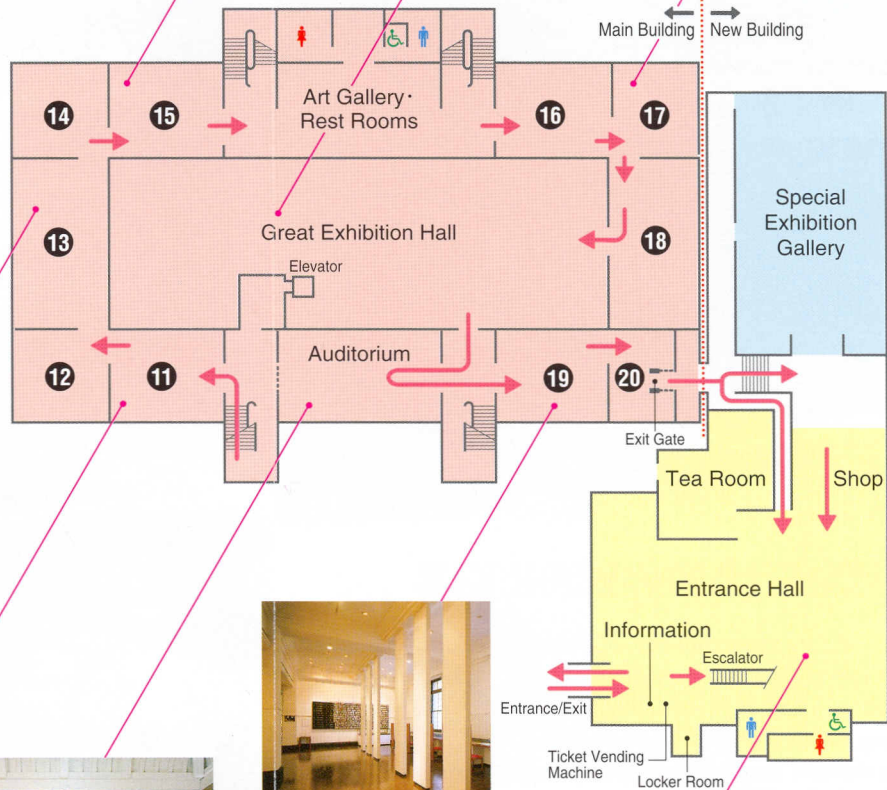
WELCOME TO THE YUSHUKAN

We are delighted to announce that the Yushukan, Japan's oldest museum (founded in 1882), has undergone a complete renovation, including the addition of a new building. Among the new facilities are two screening rooms and a Special Exhibition Gallery.

The renovation process extends to the exhibits, many of which are new. We are especially pleased to have the opportunity to display a carrier-borne Mitsubishi Zero fighter aircraft. From the Yushukan's collection, which encompasses over 100,000 items, we have selected those that shed a new light on modern Japanese history.



- ⑪ The Greater East Asian War (1)
- ⑫ The Greater East Asian War (2)
- ⑬ The Greater East Asian War (3)
- ⑭ The Greater East Asian War (4)
- ⑮ The Greater East Asian War (5)
- ⑯ Mementos of War Heroes Enshrined at Yasukuni Jinja (1)
- ⑰ Mementos of War Heroes Enshrined at Yasukuni Jinja (2)
- ⑱ Mementos of War Heroes Enshrined at Yasukuni Jinja (3)
- ⑲ Mementos of War Heroes Enshrined at Yasukuni Jinja (4)
- ⑳ Media Room



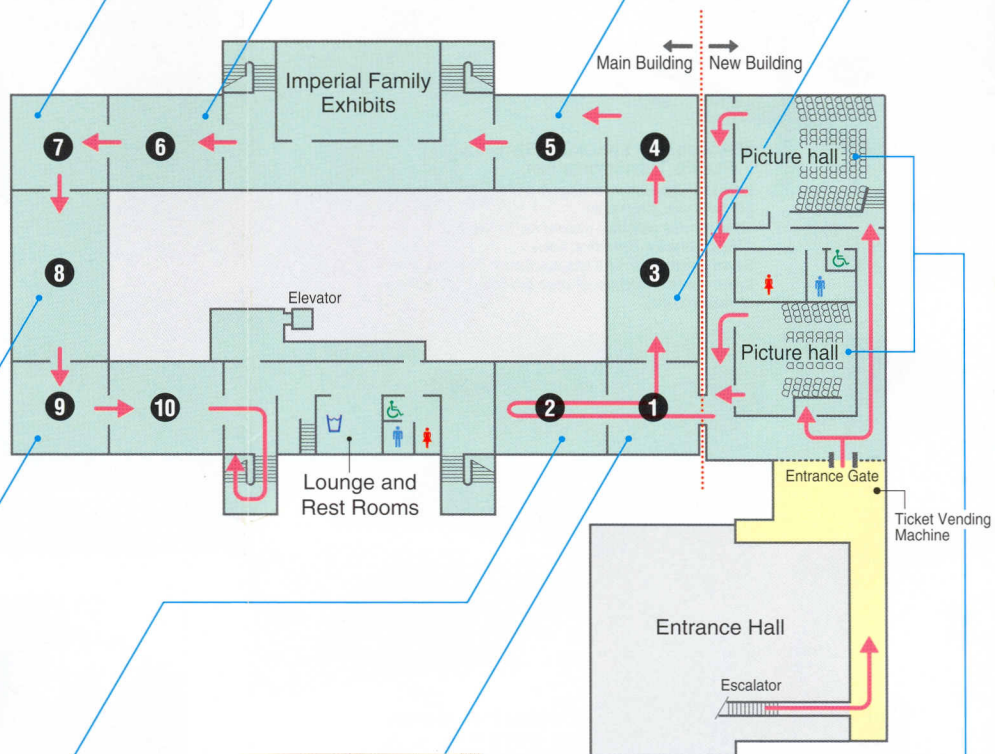
1F



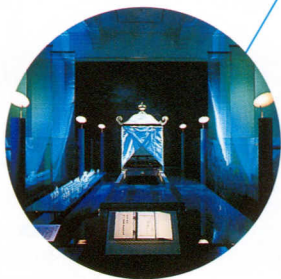
- ◆ **Please Note:**
- Still photography, as well as video and audio recordings, is not permitted.
 - No smoking inside the museum.
 - Food and drinks, pets, and dangerous objects are not allowed into the building.
 - Behavior disruptive to other visitors is prohibited.
 - If you notice any suspicious persons or objects, please notify immediately the closest museum attendant.

→ Please start your tour of the Yushukan on the second floor, where the exhibits begin.

- ① Spirit of the Samurai
- ② History of Japanese Military Traditions
- ③ The Meiji Restoration
- ④ The Satsuma Rebellion
- ⑤ The Founding of Yasukuni Jinja
- ⑥ The Sino-Japanese War
- ⑦ Panoramic Exhibits of the Russo-Japanese War
- ⑧ From the Russo-Japanese War to the Manchurian Incident
- ⑨ Model Sanctuary
- ⑩ The China Incident



2F



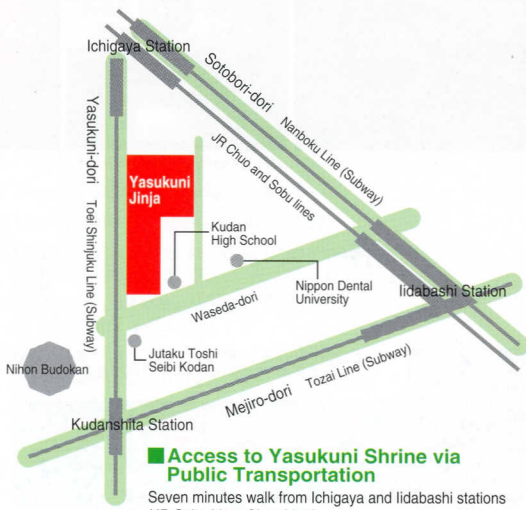
◆ Guide to Museum Facilities

- 1st Floor-Tea Room
- 1st Floor-Gift Shop

Enjoy a light snack or drink here. Souvenirs and publications are available as a remembrance of your visit today.

- 2nd Floor-Lounge and Rest Rooms
- For those requiring a wheelchair

Vending machines installed for your convenience. please ask at the reception desk.



Access to Yasukuni Shrine via Public Transportation

Seven minutes walk from Ichigaya and Idabashi stations (JR Sobu Line, Chuo Line)
 Three minutes walk from Kudanshita Station (Tozai, Shinjuku, Hanzomon lines)
 Seven minutes walk from Ichigaya Station (Nankoku Line)
 Seven minutes walk from Ichigaya and Idabashi stations (Yurakucho Line)



Visitor Information

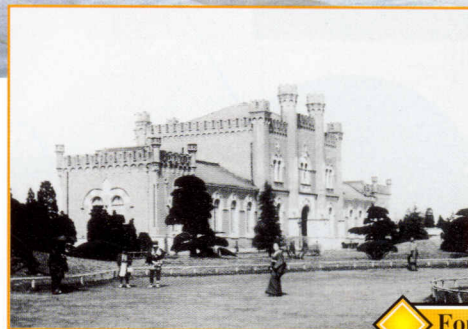
From opening time.
 9:00 a.m. to 5:00 p.m.
 (Visitors will be admitted until 30 minutes before closing time.)

Admission fees:

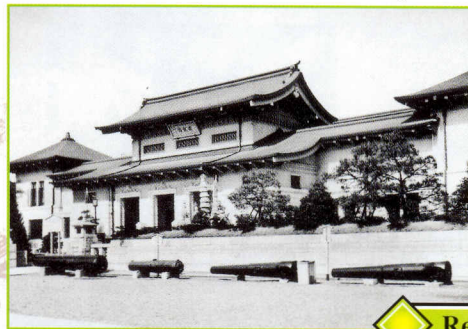
Adults: ¥800
 University students: ¥500
 High-school and middle-school students: ¥300
 Elementary students: ¥100
 We offer 20% discounts to groups (20 or more persons)

The Yushukan at Yasukuni Jinjya

3-1-1 Kudankita Chiyoda-ku, Tokyo 102-8246
 Telephone: (03) 3261-8326
 Facsimile: (03) 3261-0996
 URL: <http://www.yasukuni.or.jp/>



Founded in 1882



Rebuilt in 1932