

# PERSONAL NAVIGATOR

MONDAY, MAY 19, 2014

Sunrise: 6:30 a.m. Sunset: 8:08 p.m.  
Evening Attire: Cruise Casual  
All Aboard: 5:00 p.m.

Today: Sunny High: 82°F/28°C  
Tomorrow: Sunny High: 78°F/26°C

PORT CANAVERAL, FLORIDA

## DISNEY CRUISE LINE



PORT CANAVERAL • CASTAWAY CAY • FUNCHAL • MALAGA • BARCELONA

# TRANSATLANTIC

Aboard **DISNEY MAGIC**  **MAY 19-31, 2014**



## the Magic DAVE SHOW

WALT DISNEY THEATRE

Deck 4, Forward

6:30 p.m. & 8:45 p.m.

As a courtesy to all Guests, we kindly advise that the saving of seats is **not** permitted in the Walt Disney Theatre.

 Assistance available at the entrance to the Walt Disney Theatre 30 minutes prior to show time. 

## Welcome Aboard!

### Your Stateroom and Luggage

Staterooms will be ready at 1:30 p.m. To allow stateroom hosts to prepare your room, please do not remove the blue stanchion straps. Stateroom hosts will deliver luggage throughout the day until 5:30 p.m.

### Staterooms with Bunk Beds

Bunk beds are recessed into the ceiling and will be prepared during evening turnaround service by your Stateroom Host/ess.

### Stateroom Safe

Each stateroom is equipped with a secured storage safe. Instructions for use are located on the safe.

### To Change Dining Assignment

Requests for different seating times will be taken today: > 12:30 p.m. - 3:30 p.m., Lumiere's, Deck 3, Midship. Please call 7-1831 and leave a voicemail.

### Palo Dining Reservations:

Are required and will be taken on a first come basis today at: > 12:30 p.m. - 3:30 p.m., Palo, Deck 10, Aft. Please call 7-6843 and leave a voicemail.

### Beverage Seminar Reservations:

> 12:30 p.m. - 3:30 p.m., Promenade Lounge, Deck 3, Aft.

### Dinner

6:00 p.m. - First Seating  
8:30 p.m. - Second Seating

Please check your dining tickets for details of your dining rotation, and bring them to your specific dining location. There is no need to wait in line prior to dinner. Dining Rooms open at designated seating times and your table is reserved each night of your cruise.



## ADVENTURES AWAY

Earn your status as V.I.P. sailors! Join your Cruise Director, Brent, your Disney pals and your Cruise Staff as we officially begin your "Adventures Away."

4:30 p.m.,  
Deck Stage,  
Deck 9, Midship

## Don't Miss:

### Disney Magic - Talent Show Sign Ups

Port Adventures Desk, Deck 3, Midship

Does your family have what it takes to make their performing dreams come true? Find out at the Disney Magic Family Talent Show - dare to show your family's flair! Pre-register at the Port Adventures Desk, Deck 3, Midship.

### Walking Ship Tour

Preludes, Deck 4, Forward - 1:45 p.m. & 2:30 p.m.

Enjoy the beauty of the Disney Magic® with your Cruise Staff in this guided tour.

### Mickey Mania

D Lounge, Deck 4, Midship - 7:45 p.m.

Join us for the ultimate test of your Disney knowledge as we play our live, interactive game show, that's "insania!"

### Variety Show: Magic Dave (18+)

Fathoms, Deck 3, Forward - 10:30 p.m.

Featuring the Comedy and Magic of David Williamson, as he entertains you in this adult exclusive show.



Stop by the Port Adventures Desk, located on Deck 3, Midship, where our friendly team will assist you to plan your adventure to our ports of call!

## DINNER MENU

Animator's Palate: Let the Magic Begin  
Carioca's: Let the Magic Begin  
Lumiére's: Let the Magic Begin

## DRINK OF THE DAY

Captain's Mai Tai (Alcoholic)  
Bon Voyage (Non Alcoholic)

## IMPORTANT NUMBERS

Fire/Security: 7-3001  
Medical Emergency: 7-3000  
Health Center: 7-1923

# ADULT ACTIVITY HIGHLIGHTS



## FITNESS CLASSES

Senses Spa and Salon has a variety of seminars and fitness classes available throughout the cruise.

## BEVERAGE SEMINARS

Your beverage team has a host of tastings and seminars to entertain and educate you. Pre-book these experiences at Promenade Lounge Deck 3, Aft until 12:00 a.m. or at the Guest Services, Deck 3, Midship (nominal fee applies).

## ART OF THE THEME SHOW TOUR

18+ Meet at Palo, Deck 10, Aft - Pre-Book at Guest Services

Scheduled throughout your cruise.

## Cruise Highlights

<b>Monday</b>	<b>PORT CANAVERAL</b> <i>Port Departure: 4:00 p.m.</i> <i>All Aboard: 5:00 p.m.</i> <i>Attire: Cruise Casual</i>	<b>SHOWTIME:</b> <b>MAGIC DAVE</b> <i>Walt Disney Theatre</i> 6:30 p.m. & 8:45 p.m.
<b>Tuesday</b>	<b>DISNEY'S CASTAWAY CAY</b> <i>All Ashore: 8:30 a.m.</i> <i>All Aboard: 3:00 p.m.</i> <i>Attire: Formal</i>	<b>TWICE CHARMED</b> <i>Walt Disney Theatre</i> 6:30 p.m. & 8:45 p.m.
<b>Wednesday</b>	<b>DAY AT SEA</b> <i>Attire: Cruise Casual</i>	<b>SHOWTIME:</b> <b>LYNN TREFZGER</b> <i>Walt Disney Theatre</i> 6:30 p.m. & 8:45 p.m.
<b>Thursday</b>	<b>DAY AT SEA</b> <i>Attire: Cruise Casual</i>	<b>VILLAINS TONIGHT!</b> <i>Walt Disney Theatre</i> 6:30 p.m. & 8:45 p.m.
<b>Friday</b>	<b>DAY AT SEA</b> <i>Attire: Cruise Casual</i>	<b>SHOWTIME:</b> <b>KYLE KNIGHT &amp; MISTIE</b> <i>Walt Disney Theatre</i> 6:30 p.m. & 8:45 p.m.
<b>Saturday</b>	<b>DAY AT SEA</b> <i>Attire: Cruise Casual</i>	<b>SHOWTIME:</b> <b>TESSA SUNNIVA VAN TOL</b> <i>Walt Disney Theatre</i> 6:30 p.m. & 8:45 p.m.
<b>Sunday</b>	<b>DAY AT SEA</b> <i>Attire: Pirate or Cruise Casual</i>	<b>SHOWTIME:</b> <b>BEATLES CELEBRATION</b> <i>Walt Disney Theatre</i> 6:30 p.m. & 8:45 p.m.
<b>Monday</b>	<b>DAY AT SEA</b> <i>Attire: Semi Formal</i>	<b>WALT DISNEY:</b> <b>THE DREAM GOES ON</b> <i>Walt Disney Theatre</i> 6:30 p.m. & 8:45 p.m.
<b>Tuesday</b>	<b>FUNCHAL (MADEIRA)</b> <i>All Ashore: 12:00 p.m.</i> <i>All Aboard: 5:45 p.m.</i> <i>Attire: Cruise Casual</i>	<b>SHOWTIME:</b> <b>LOST LOCOS OLE!</b> <i>Walt Disney Theatre</i> 6:30 p.m. & 8:45 p.m.
<b>Wednesday</b>	<b>DAY AT SEA</b> <i>Attire: Formal</i>	<b>SHOWTIME:</b> <b>STRINGFEVER</b> <i>Walt Disney Theatre</i> 6:30 p.m. & 8:45 p.m.
<b>Thursday</b>	<b>MALAGA (SPAIN)</b> <i>All Ashore: 8:15 a.m.</i> <i>All Aboard: 5:45 p.m.</i> <i>Attire: Cruise Casual</i>	<b>CREW TALENT SHOW</b> <i>Walt Disney Theatre</i> 6:30 p.m. & 8:45 p.m.
<b>Friday</b>	<b>DAY AT SEA</b> <i>Attire: Cruise Casual</i>	<b>DISNEY DREAMS:</b> <b>AN ENCHANTED CLASSIC</b> <i>Walt Disney Theatre</i> 6:30 p.m. & 8:45 p.m.

Subject to change.

# FAMILY ACTIVITY HIGHLIGHTS



**RUNDISNEY: CASTAWAY CAY 5K REGISTRATION (10+)**  
 Pre-Book at Guest Services or the Port Adventures Desk, Deck 3, Midship  
 Sign up today for the runDisney: Castaway Cay 5K! Please visit the Port Adventures Desk or the Guest Services Desk to register at anytime prior to our arrival at Disney's Castaway Cay. Please note that runners must be 10 years of age or older to participate.

## FEATURED VARIETY ACTS THIS VOYAGE



**THE COMEDY & MAGIC OF MAGIC DAVE**  
 David is an international award-winning magician. He is the first ever recipient of the prestigious International Brotherhood of Magicians Gold Cup Award of Excellence in close-up magic. David was voted Sleight of Hand Magician of the Year two years in a row by his peers at Hollywood's renowned Magic Castle. David was voted Most Wanted Magician at the 2003 European FISM Magic Convention.



**THE IMPROV COMEDY OF IMPROV SHMIMPROV**  
 Improv Shmimprov is improvised comedy as you've never seen it before! Shmimprov's show is fast, funny, and hugely audience interactive. They may ask an audience member to provide sound effects for a scene, move them like mannequins, and even lend them their cell phone to use their text messages as dialogue!



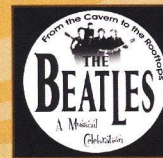
**THE COMEDY & VENTRILOQUISM OF LYNN TREFZGER**  
 Lynn is a ventriloquist/comedienne with a trunk full of zany characters. Audiences are treated to Lynn's vocal illusion talents, when they may meet a drunken and lovable camel, a grumpy old man, a feisty little girl, and may even see some other audience members who are brought up for the action! Her off-the-wall audience interplay is tailored for both family and adult audiences.



**THE MAGIC & ILLUSION OF KYLE KNIGHT & MISTIE**  
 Las Vegas based illusionists, Kyle Knight and Mistie, surprise their audience with a different approach to magic as they reveal guarded secrets, perform impossible feats while being totally surrounded, and allow their audience to get up close and involved in ways they've never seen before.



**THE COMEDY & MUSIC OF LOST LOCOS OLE!**  
 A chaotic mix of virtuoso Spanish guitar, daredevil juggling, flamboyant flamenco dancing, and zany slapstick comedy, Lost Locos Ole! pumps up the volume and pulls out all the stops with the extraordinary cajon drum, gypsy stick dance and palmas. Lost Locos Ole! Flamen(co)medy is a musical celebration of flamenco, mixed with a healthy dose of fast-paced comedy.



**THE MUSIC OF BEATLES CELEBRATION**  
 This live extravaganza takes the audience through some of the most exciting, hand-clapping, jewellery-jangling Beatles songs while remembering to take time to pull on the audiences emotions with such classics as "Let It Be" and "Yesterday". But what's really authentic, they really are all the way from Liverpool!



**THE PHYSICAL COMEDY OF MAX WINFREY**  
 Think fast! You'd better if you're gonna sit within sight of Max Winfrey at his show. That can come in handy when you see a bowling ball flying toward your head. Or when you find yourself on stage in the world's only audience participatory knife throwing act. With a gift for high-speed wit and off-the-wall skills like kitchen sink juggling, Max has carved out a unique niche as a stunt comedian.



**THE MUSIC OF STRINGFEVER**  
 Stringfever - the world's first genetically modified String Quartet comprises of brothers Giles, Ralph, Neal and their cousin Graham. No ordinary Quartet - They perform live on five and six string electric violins, viola and cello. Since their debut in 2003 they have delighted audiences in hundreds of cities in more than 20 countries!



**THE ACROBATICS & MUSIC OF DONOVAN & REBECCA**  
 Rebecca & Donovan have mesmerized audiences internationally, and were a much talked about feature of last summer's UK TV hit "Britain's Got Talent". Their Acrobalance and Aerial Act has wowed millions, and even earned them membership into the Guinness Book of world records. Powerful and gentle, romantic and awe inspiring, this act will keep you amazed!

# YOUTH ACTIVITIES HIGHLIGHTS



**Deck 5, Midship (7-5864)** 12:30 p.m. - 3:30 p.m.  
6:00 p.m. - 11:30 p.m.  
Infants and Toddlers can enjoy toys and activities at It's a Small World Nursery. Reservations are first come, first served so please stop by!



**Deck 5, Midship (7-1440)**  
(3 - 12 years old)  
12:30 p.m. - 3:30 p.m.  
5:00 p.m. - 12:00 mid



**Deck 5, Midship (7-1445)**  
(3 - 12 years old)  
12:30 p.m. - 3:30 p.m.  
5:00 p.m. - 12:00 mid

## REGISTRATION FOR 3 - 12 YEAR OLDS

Meet the Youth Activities Team in Disney's Oceaneer Lab and Disney's Oceaneer Club, complete your registration & learn all about the Themed Experiences this cruise!

**CLUBHOUSE SERIES** - The Clubhouse Themed Experiences focus on movement and feature content which appeals to younger children. *Recommended for children seven years and younger.*

**STORYBOOK SERIES** - The Storybook Series Themed Experiences are designed with a strong connection to the Disney classic stories. *Recommended for children seven years and younger.*

**JUMP UP! SERIES** - The Jump Up! Themed Experiences will include large ground games & movement-oriented activities.

**CREATE & INVENT SERIES** - The Create & Invent Themed Experiences will have a tactile focus allowing children to create and admire their work.

**IN THE SPOTLIGHT SERIES** - The In The Spotlight Themed Experiences focus on children's stage presence with lots of activities and enthusiasm. *Recommended for children seven years and older.*

**SOLVE IT! SERIES** - The Solve It! Themed Experiences are less active, but will challenge children with problem/solutions-based activities. *Recommended for children seven years and older.*

**YOUTH ACTIVITIES OPEN HOUSE** - Activities for families, adults and children of all ages to enjoy together.

## DINE & PLAY

As a convenience for families dining at 8:30 p.m., our Youth Activities Counselors will be available at 9:30 p.m. at the entrance of Lumiere's and Carioca's and 9:45 p.m. at Animator's Palate to bring registered children to join the fun in Disney's Oceaneer Club and Disney's Oceaneer Lab.

## Youth Activities Open House

Open House is an opportunity for all to come and participate in a variety of exciting activities and free time in It's a Small World Nursery, Disney's Oceaneer Club, Disney's Oceaneer Lab, Edge and Vibe throughout the cruise. During these times secured programming will still be offered in the other venue for those looking to check their children into care.



**Deck 2, Midship (7-5816)** 12:30 p.m. - 3:30 p.m.  
(11 - 14 years old) 5:00 p.m. - 12:00 mid

## ICE BREAKERS

10:30 p.m.  
Fancy some fun? Want to get to know your fellow guests? Then join us as we break the ice in this fun filled game show



**Deck 10, Midship (7-18517)** 12:30 p.m. - 3:30 p.m.  
(14 - 17 years old) 5:00 p.m. - 1:00 a.m.

## THE DOWNLOAD

10:30 p.m.  
Come up to Vibe and help plan all the fun activities you will be doing this cruise with your new friends!

# BUENA VISTA THEATRE

Deck 5, Aft  
Feature Movies this Voyage

## MONDAY - PORT CANAVERAL

6:00 p.m. G Disneynature: Bears  
8:30 p.m. G Disneynature: Bears  
10:30 p.m. PG-13 Saving Mr. Banks

## TUESDAY - DISNEY'S CASTAWAY CAY

8:30 a.m. G Toy Story  
2:45 p.m. PG-13 Captain America: The Winter Soldier **DOLBY.3D**  
5:30 p.m. PG Million Dollar Arm  
8:00 p.m. PG Million Dollar Arm  
10:30 p.m. PG-13 Captain America: The Winter Soldier **DOLBY.3D**

## WEDNESDAY - DAY AT SEA

8:30 a.m. G A Bug's Life **DOLBY.3D**  
12:00 p.m. PG Frozen **DOLBY.3D**  
2:15 p.m. PG-13 Les Miserables  
5:30 p.m. PG-13 Saving Mr. Banks  
8:00 p.m. PG-13 Saving Mr. Banks  
10:30 p.m. R American Hustle

## THURSDAY - DAY AT SEA

8:30 a.m. G Toy Story 2  
10:30 a.m. PG Planes  
12:30 p.m. PG Muppets Most Wanted  
3:00 p.m. R American Hustle  
5:45 p.m. PG Frozen  
8:15 p.m. PG Frozen  
10:30 p.m. R August: Osage County

## FRIDAY - DAY AT SEA

8:30 a.m. G Monsters, Inc.  
10:30 a.m. G Disneynature: Bears  
12:15 p.m. PG-13 Captain America: The Winter Soldier **DOLBY.3D**  
3:00 p.m. R August: Osage County  
5:30 p.m. PG-13 Captain America: The Winter Soldier  
8:15 p.m. PG-13 Captain America: The Winter Soldier  
11:00 p.m. R Silver Linings Playbook

## SATURDAY - DAY AT SEA

8:30 a.m. G Finding Nemo  
10:30 a.m. PG Planes  
12:30 p.m. PG Frozen **DOLBY.3D**  
3:00 p.m. R Silver Linings Playbook  
5:30 p.m. PG Muppets Most Wanted  
8:15 p.m. PG Muppets Most Wanted  
10:30 p.m. R Argo

ADDITIONAL MOVIE LISTINGS WILL APPEAR ON THE SUNDAY, MAY 28TH PERSONAL NAVIGATOR

Subject to Change.

# MORE TO ENJOY WHILE ONBOARD

## NEW IN 2015!



Chart a magical new course for northern Europe - explore Norwegian fjords & Iceland - steeped in Viking history from steaming geysers to scenic mountain ranges. Visit the Onboard Sales Desk for more information.



## DISNEY VACATION CLUB® MEMBERS CELEBRATION

Members! Mix and mingle with other Members and learn how you can enhance your Membership! Please see a Disney Vacation Club representative on Deck 4, Midship, or call 7-2805 from your stateroom phone for more information.

## Connect@Sea

We are now offering a NEW and improved Internet service to stay connected on your cruise like no other in the industry! Internet packages range from \$0.25 per MB - \$89.00 (1000 MB package). For more information contact your Connect@Sea Expert or Guest Services onboard.

## QUARTER MASTERS ARCADE

Where can you fly a fighter jet, save a Princess, race NASCAR's greatest and beat bad guys all before dinner? Quarter Masters is on Deck 9, Midship, where the champions play.



## FORGOT TO BOOK ONLINE?

Book and receive any Spa Signature Treatment today and receive a complimentary, 15 minute add-on treatment of your choice (Valued at \$49).

-or-  
10/20/30:

Book any 3 Signature Services per person and receive a 10% discount on the 1<sup>st</sup> service, 20% discount on the 2<sup>nd</sup> service & a 30% discount on the 3<sup>rd</sup> service.

**Deck 9, Forward - Phone : 7-1465**



Create the most memorable experiences during your Disney Cruise Line Transatlantic vacation with Port Adventures! Our Port Adventures are designed for you to see the best our ports have to offer.

Visit our friendly team at the **Port Adventures Desk, Deck 3, Midship.**

## SHOPPING

### 2014 DISNEY CRUISE LINE MERCHANDISE

Step into Mickey's Mainsail today and commemorate your Disney cruise with a wide selection of 2014 Disney Cruise Line merchandise. From t-shirts to photo albums and more, you are sure to find a special souvenir for the whole family. Deck 4, Forward.

### DISNEY CRUISE LINE TRANSATLANTIC CROSSING TEE AVAILABLE

Commemorate your Transatlantic Crossing on the Disney Magic® Cruise Ship with a specially designed t-shirt available at White Caps. Deck 4, Forward.

### ART GALLERY

Stop by the Art Gallery today to view our selection of Thomas Kinkade Limited Edition Disney paintings. While there, see if you can find some hidden characters in the artwork. Deck 4, Midship.

### STYLISH JEWELRY AT WHITE CAPS

On a budget but still in need of some bling? Stop by White Caps today where you'll find a wide selection of stylish jewelry from popular brands such as Fossil and Alex and Ani. Deck 4, Forward.

### SOPHIA FIORI DIAMOND TRUNK SHOW

Sophia Fiori is an LA based designer, wholesaler, and one of Hollywood's favorite designers. Industry leaders in vivid colored diamonds, and more specifically Caribbean blue diamonds - one of the single most popular purchases at sea because it reminds everyone of the colors of the Caribbean oceans! White Caps, Deck 4, Forward.

## SOPHIA FIORI DIAMOND TRUNK SHOW

Dazzling Diamonds, Tantalizing Tanzanite and many other Jewels.

## WHITECAPS

**Deck 4, Forward**

*Sophia Fiori*



*Shutters*

## EMBARKATION SPECIAL

Enter our embarkation raffle for a chance to win a GET THE PICTURE! All Inclusive Digital Package which includes all your stateroom photos on one photo disc.

**Deck 4, Aft**

## IMPORTANT INFORMATION

### Security Notice

All Guests (including Children) who wish to disembark or embark the ship are required to present their Key to the World card at the gangway. A photo ID is also required for those Guests who are 18 years of age or older. Guests under the age of 18 are required to have a parent, guardian or other responsible adult sign an authorization form at the Guest Service Desk if they wish to go ashore unaccompanied or with any adult from another stateroom.

**Sunscreen/Insect Repellent Advisory**  
Use sunscreen first and protect against mosquito-borne illnesses by applying insect repellent on top of sunscreen when going ashore.

### Cold and Flu Reminder

Please wash hands frequently and thoroughly, particularly before meals. Contact the Health Center by dialing 7-1923, should anyone in your party become ill.

### Inclement Weather

For the safety of all Guests, outdoor events may be changed due to unforeseen weather conditions.

### Corridor Quiet Hours

As a courtesy to all our Guests, please recognize quiet hallway hours from 10:00 p.m. til 8:00 a.m.

### Environmental Message

With Disney's commitment to the Environment please refrain from throwing anything over the Ship's side. Thank you.

### No Reserved Seats Policy

As a courtesy to all Guests we kindly advise that the saving of seats is not permitted in the Walt Disney Theatre, and the saving of the sun loungers is not permitted on Deck 9 and 10. Items left unattended will be returned to lost and found at Guest Services, Deck 3, Midship.

### Smoking

For the comfort of our guests, the following areas are designated as smoking areas:

- Deck 10 Forward, Starboard Side
- Deck 9, Forward, Starboard Side at Quiet Cove
- Deck 4, Starboard Side from 6:00 p.m. to 6:00 a.m. only (all of Deck 4 is non-smoking from 6:00 a.m. to 6:00 p.m.)

Smoking is prohibited inside all guest staterooms and on stateroom verandahs. Guests found smoking in their staterooms or on their verandahs will be charged a \$250 stateroom recovery fee.

### Walt Disney Theatre

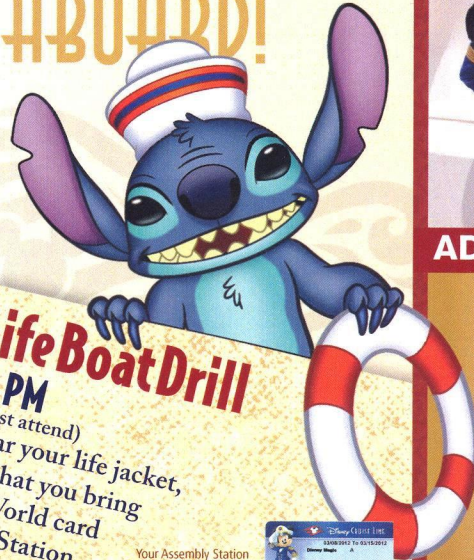
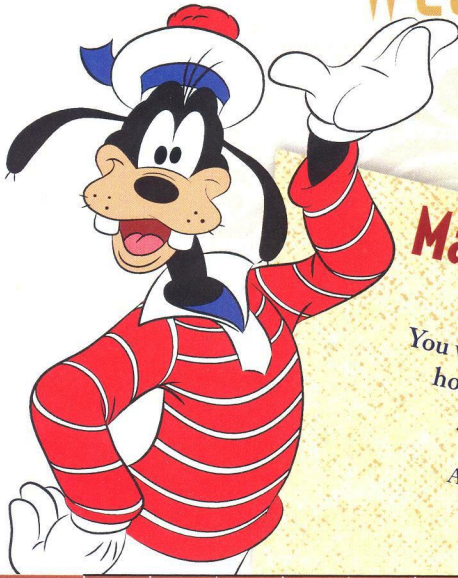
Theatrical performances may use artificial fog, strobe lights, pyrotechnics and other special effects. For the safety of our performers and the comfort of those around you, the use of any photography or video recording device or any electronic equipment is prohibited.

### Verandah Safety

Please do not leave any combustible materials on your balcony when not present in your stateroom for safety reasons.

Due to port regulations, when the ship is docked, the stores will remain closed.

# WELCOME ABOARD!



## ADVENTURES AWAY

Earn your status as V.I.P. sailors! Join your Cruise Director, Brent, your Disney pals and your Cruise Staff as we officially begin your "Adventures Away."

**Deck Stage,  
Deck 9, Midship,  
4:30 p.m.**

## Mandatory Life Boat Drill

**4:00 PM**  
(All Guests must attend)  
You will not need to wear your life jacket, however it is critical that you bring your Key To The World card to your Assembly Station. All ship services will be suspended between 3:30 and 4:30 p.m.

Your Assembly Station is indicated on your Key To The World card.

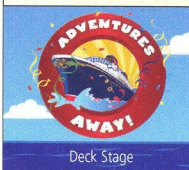


Fold along the dotted lines and take me with you so you don't miss any of the fun!

Afternoon	1:45	2:00	2:15	2:30	2:45	3:00	3:15	3:30	3:45	4:00	4:15	4:30	4:45	5:00	5:15	5:30	5:45	6:00	6:15	6:30	6:45	
FUNNEL VISION																						101 Dalmatians (G) Funnel Vision
BUENA VISTA THEATRE																						Disneynature: Bears (G) Duration: 1 Hour 25 Minutes
CHARACTERS																						
FUN FOR ALL AGES																						
ADULTS																						
VIBE																						
EDGE																						
OCEANEER LAB																						
OCEANEER CLUB																						

All ship services will be suspended during this time for the mandatory Life Boat Drill scheduled for 4:00 p.m. along Deck 4.

Please refer to the posted drill instructions prior to heading to Deck 4.



Minnie Lobby Atrium (P)  
Mickey Lobby Atrium (P)  
Pool Side Jams with Cruise Staff DJ Deck Stage  
Live Music with Midtown Promenade Lounge  
Live Piano with Bernadette Bihari Lobby Atrium  
Showtime: The Magic & Comedy of Magic Dave Walt Disney Theatre

Symbol for activities that will be repeated during the cruise



Evening	7:00	7:15	7:30	7:45	8:00	8:15	8:30	8:45	9:00	9:15	9:30	9:45	10:00	10:15	10:30	10:45	11:00	11:15	11:30	11:45	12:00	
FUNNEL VISION																						
BUENA VISTA THEATRE																						
CHARACTERS																						
FUN FOR ALL AGES																						
ADULTS																						
VIBE																						
EDGE																						
OCEANEER LAB																						
OCEANEER CLUB																						

FOLD

IN THE SPOTLIGHT SERIES

SOUL-IT! SERIES

MAMP UP! SERIES

CREATE & INVENT SERIES

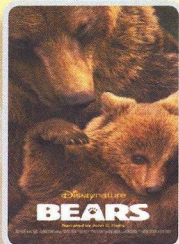
CLUBHOUSE SERIES

STORYBOOK SERIES

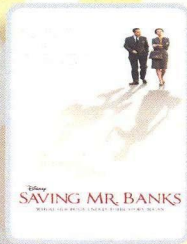
OPEN HOUSE

# BUENA VISTA THEATRE

Deck 5, Aft



6:00 p.m. & 8:30 p.m.  
Duration: 1 hr 25 mins  
Rating: G



10:30 p.m.  
Duration: 2 hrs 5 mins  
Rating: PG-13

## Character Appearances

**ADVENTURES AWAY**  
Deck Stage - 4:30 p.m.

**CAPTAIN AMERICA**  
Preludes  
7:30 p.m. & 9:45 p.m.

**MINNIE MOUSE**  
Lobby Atrium (P) - 5:15 p.m.,  
7:15 p.m. & 9:45 p.m.

**DONALD DUCK**  
Deck 4, Midship - 9:45 p.m.

**MICKY MOUSE**  
Lobby Atrium (P) - 5:45 p.m.,  
7:45 p.m. & 10:15 p.m.

**GOOFY**  
Deck 4, Midship  
7:30 p.m. & 10:15 p.m.



(P) - Port Side, (S) Starboard Side

Check here each day for Character appearances.

For detailed Character appearance information, see the Character Information Board in the Lobby Atrium.

Meet-and-Greets will be advertised for the length of time the line will be open. To avoid disappointment, please meet at start time of appearances.

## YOUTH ACTIVITIES THEMED EXPERIENCES

**CLUBHOUSE SERIES**  
focuses on movement and features content which appeals to younger children.

**JUMP UP! SERIES**  
includes large group games & movement-oriented activities.

**IN THE SPOTLIGHT SERIES**  
focuses on children's stage experiences with lots of activities and enthusiasm.

**STORYBOOK SERIES**  
is designed with a strong connection to the Disney classic stories.

**CREATE & INVENT SERIES**  
will have a tactile focus allowing children to create and admire their work.

**SOLVE IT! SERIES**  
are less active, but will challenge children with problem/solutions-based activities.

### YOUTH ACTIVITIES OPEN HOUSE

A non-secured program with activities for families, adults and children of all ages to enjoy together.

## SHIP DIRECTORY

### YOUTH ACTIVITIES

DISNEY'S OCEANEER CLUB	DECK 5, MID	12:30 PM - 3:30 PM 5:00 PM - 12:00 MID
DISNEY'S OCEANEER LAB	DECK 5, MID	12:30 PM - 3:30 PM 5:00 PM - 12:00 MID
EDGE	DECK 2, MID	12:30 PM - 3:30 PM 5:00 PM - 12:00 MID
IT'S A SMALL WORLD NURSERY	DECK 5, AFT	12:30 PM - 3:30 PM 6:00 PM - 11:30 PM
VIBE	DECK 10, MID	12:30 PM - 3:30 PM 5:00 PM - 1:00 AM

### POOLS

\*Children under 12 years of age must have adult supervision in all pools.

AQUADUNK	DECK 10, MID	12:30 PM - 3:00 PM 6:00 PM - 9:00 PM
AQUALAB	DECK 9, AFT	12:00 PM - 3:30 PM 4:30 PM - 9:00 PM
GOOFY'S POOL	DECK 9, MID	12:00 PM - 3:30 PM 6:00 PM - 10:00 PM
NEPHEWS' SPLASH ZONE	DECK 9, AFT	12:00 PM - 3:30 PM 4:30 PM - 6:00 PM
QUIET COVE POOL (18+)	DECK 9, FWD	12:00 PM - 12:00 MID
TWIST 'N' SPOUT	DECK 9, AFT	12:00 PM - 3:00 PM 4:30 PM - 9:00 PM

### RECREATION

PORT ADVENTURES DESK	DECK 3, MID	12:00 PM - 3:30 PM 4:30 PM - 6:00 PM 7:00 PM - 8:30 PM
SENSES FITNESS CENTER (18+)	DECK 9, FWD	11:30 AM - 10:00 PM
WIDE WORLD OF SPORTS DECK	DECK 10, FWD	24 HOURS

### GENERAL INFORMATION

BUENA VISTA THEATRE	DECK 5, AFT	SHOWTIMES
DISNEY VACATION CLUB DESK	DECK 4, MID	5:00 PM - 8:00 PM
ONBOARD SALES DESK	DECK 4, MID	7:30 PM - 8:30 PM
FUNNEL VISION	DECK 9, MID	SHOWTIMES
GUEST SERVICES	DECK 3, MID	24 HOURS
HAIR BRAIDING	DECK 9, MID	
MEDICAL HEALTH CENTER	DECK 1, FWD	4:30 PM - 7:30 PM
PORT & SHOPPING DESK	DECK 3, MID	
PRELUDES	DECK 4, FWD	5:30 PM - 9:30 PM
QUARTER MASTERS (ARCADE)	DECK 9, MID	24 HOURS
SENSES SPA AND SALON	DECK 9, FWD	11:30 AM - 10:00 PM
SHUTTERS PHOTO GALLERY	DECK 4, AFT	6:30 PM - 10:00 PM
WALT DISNEY THEATRE	DECK 4, FWD	SHOWTIMES

### SHOPPING

MICKY'S MAINSAIL	DECK 4, FWD	6:00 PM - 11:00 PM
QUACKS	DECK 9, MID	12:30 PM - 6:30 PM
SEA TREASURES	DECK 3, FWD	6:00 PM - 11:00 PM
VISTA GALLERY	DECK 4, MID	6:00 PM - 10:00 PM
WHITE CAPS	DECK 4, FWD	6:00 PM - 11:00 PM

## IMPORTANT NUMBERS

Fire/Security: 7-3001  
Medical EMERGENCY: 7-3000  
Health Center: 7-1923

## DINNER MENU

Animator's Palate: Let the Magic Begin  
Carioca's: Let the Magic Begin  
Lumiére's: Let the Magic Begin  
Dining Times: 6:00 p.m. & 8:30 p.m.

## DRINK OF THE DAY

Captain's Mai Tai (Alcoholic)  
Bon Voyage (Non Alcoholic)

## WEATHER FORECAST

Today: Sunny  
High: 82°F/28°C  
Tomorrow: Sunny  
High: 78°F/26°C

Evening Attire: Cruise Casual

## DINING & LOUNGES

### LUNCH

CABANAS	DECK 9, AFT	11:45 AM - 3:15 PM
CARIOCA'S	DECK 3, AFT	11:45 AM - 2:15 PM
DAISY'S DE LITES	DECK 9, AFT	12:00 PM - 3:30 PM 4:15 PM - 6:00 PM
PETE'S BOILER BITES	DECK 9, AFT	12:00 PM - 3:30 PM 4:15 PM - 6:00 PM
PINOCCHIO'S PIZZERIA	DECK 9, MID	12:00 PM - 3:30 PM 4:15 PM - 6:00 PM

### DINNER

ANIMATOR'S PALATE	DECK 4, AFT	6:00 PM & 8:30 PM
CARIOCA'S	DECK 3, AFT	6:00 PM & 8:30 PM
LUMIÈRE'S	DECK 3, MID	6:00 PM & 8:30 PM
PALO (FOR RESERVATIONS CALL 7-6843)	DECK 10, AFT	6:00 PM - 8:30 PM
PETE'S BOILER BITES	DECK 9, AFT	6:00 PM - 10:00 PM

### LATE NIGHT SNACKS

O'GILLS PUB	DECK 3, FWD	10:45 PM - 11:45 PM
PINOCCHIO'S PIZZERIA	DECK 9, MID	9:30 PM - 12:00 MID
PROMENADE LOUNGE	DECK 3, AFT	10:45 PM - 11:45 PM

### ADDED FEATURES

EYE SCREAM	DECK 9, AFT	12:00 PM - 11:00 PM
BEVERAGE STATION	DECK 9, AFT	24 HOURS
ROOM SERVICE	DIAL 7-4330	24 HOURS

### ENTERTAINMENT - LOUNGES - BARS

Adults must be 21 and older to consume alcoholic beverages.

AFTER HOURS	DECK 3, FWD	(AFTER 9:00 P.M. ADULTS ONLY)
COVE CAFE (18+)	DECK 9, MID	11:30 AM - 12:00 MID
D LOUNGE	DECK 4, MID	SHOWTIMES
FATHOMS (18+)	DECK 3, FWD	7:00 PM - 2:00 AM
FROZONE TREATS	DECK 9, AFT	11:30 AM - 8:00 PM
INTERNET CAFE	DECK 3, AFT	24 HOURS
KEYS (18+)	DECK 3, FWD	5:30 PM - 12:30 AM
O'GILLS PUB (18+)	DECK 3, FWD	11:30 AM - 12:30 AM
PRELUDES	DECK 4, FWD	5:30 PM - 9:30 PM
PROMENADE LOUNGE	DECK 3, AFT	11:30 AM - 12:00 MID
PINOCCHIO'S PIZZERIA	DECK 9, MID	11:30 AM - 12:00 MID
SIGNALS (18+)	DECK 9, FWD	11:30 AM - 10:00 PM

Public Health Advisory: Consuming raw or undercooked meats, poultry, seafood, shellfish, or eggs may increase your risk for foodborne illness, especially if you have certain medical condition.



Explore and more with our carefully selected Port Adventures. Pass by the Port Adventures Desk, Deck 3, Midship to find out more.