

PERSONAL NAVIGATOR

Sunrise: 7:36 a.m. Sunset: 9:21 p.m.
Evening Attire: Cruise Casual

Today: Partly Sunny High: 74°F/23°C
Tomorrow: Partly Sunny High: 74°F/23°C

FRIDAY, MAY 23, 2014

DAY AT SEA

The Magic & Illusion of **Kyle Knight & Mistie**




WALT DISNEY THEATRE

Deck 4, Forward,
6:30 p.m. & 8:45 p.m.

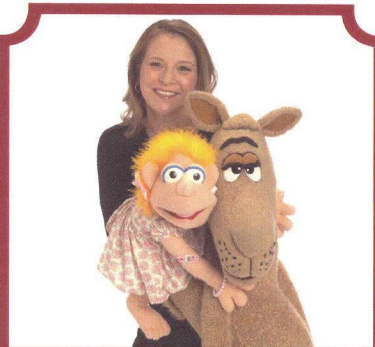
As a courtesy to all Guests, we kindly advise that the saving of seats is **not** permitted in the Walt Disney Theatre.



 Assistance available at the entrance to the Walt Disney Theatre 30 minutes prior to show time.

Disney MAGIC Fun Facts

- 8260 cups of coffee are served each day onboard.
- The ship can make 500,000 gallons of fresh water from sea water, everyday while cruising.
- The 20,000 gallons of paint it takes to cover our ship could paint 2,000 average American homes.
- There are 5390 pillows onboard
- The 1367 miles of cable on our ship would be enough to run an extension cord between Austin and Detroit.
- Of the 5,000 eggs consumed at breakfast each morning, 1956 are scrambled, 552 are served sunny side up, 480 are eaten soft boiled, 984 are made into omelettes and 976 are made into other egg dishes.
- The tonnage of our anchor compares with the weight of three elephants.



ADULT VARIETY

Featuring the Comedy & Ventriloquism of Lynn Trefzger, as she entertains you in this adult exclusive cabaret style show.

Walt Disney Theatre (18+),
Deck 4, Forward,
10:45 p.m.

(Doors open at 10:30 p.m.)

Don't Miss:

Art of The Theme Show Tour (18+)

Palo, Deck 10, Aft - 9:30 a.m.

Join us on a guided ship tour and discover the key ingredients that make the Disney Magic.

Charles Richardson: Islands of the Atlantic

Animator's Palate, Deck 4, Aft - 10:30 a.m. & 12:15 p.m.

Discover why islands, including Madeira, crop up throughout the Atlantic Ocean.

Improv Shmimprov Workshop (6+)

Fathoms, Deck 3, Forward - 1:00 p.m.

Join Improv Shmimprov for a fun improvisation workshop.

Disney Tunes Trivia

Promenade Lounge, Deck 3, Aft - 7:45 p.m.

Determine just how well you know your Disney Tunes with your Cruise Staff.



Stop by the Port Adventures Desk, located on Deck 3, Midship, where our friendly team will assist you to plan your adventure to our ports of call!

DINNER MENU

Animator's Palate: Transatlantic
Carioca's: Transatlantic
Lumiére's: Transatlantic

DRINK OF THE DAY

True Colors (Alcoholic)
Espresso Freeze (Non Alcoholic)

IMPORTANT NUMBERS

Fire/Security: 7-3001
Medical Emergency: 7-3000
Health Center: 7-1923

ADULT ACTIVITY HIGHLIGHTS

SENSES SPA FITNESS CLASSES & SEMINARS

Body Sculpt Boot Camp - Senses Spa Fitness Center - 8:00 a.m.
Wake Up & Stretch Class - Senses Spa Fitness Center - 9:00 a.m.
Go Smile Seminar - Senses Spa & Salon - 9:30 a.m.
Pilates - Senses Spa Fitness Center - 10:00 a.m.
Acupuncture: Stress, Insomnia & Depression - O'Gills Pub - 11:00 a.m.
You Are What You Eat - Senses Spa & Salon - 11:00 a.m.
Ionthermie Seminar - Senses Spa & Salon - 11:45 a.m.
Good Feet: Relieving Back Pain - Senses Spa & Salon - 2:30 p.m.
Abs Attack - Senses Spa Fitness Center - 4:00 p.m.
Group Cycling - Senses Spa Fitness Center - 5:00 p.m.

TASTING CLASSES

Rum Tasting (21+) - Keys - 12:30 p.m.
Whiskey Tasting (21+) - Cove Cafe - 10:30 p.m.
 Please make reservations for tastings at Guest Services for a nominal fee.
 Tasting Seminars are only for Guests 21 and Older.

CLUB 18*21 - BRUNCH

Lumiere's, Deck 3, Midship - 11:30 a.m.
 Get to know your fellow 18*21 guests over a spot of lunch.

CLUB 18*21 - SCAVENGER HUNT

O'Gills Pub, Deck 3, Forward - 1:45 p.m.
 Join your Cruise Staff for this crazy scavenger hunt around the ship. Bring your cameras!

CLUB 18*21 - MIXER

O'Gills Pub, Deck 3, Forward - 10:15 p.m.
 Come to join fellow cruisers your own age at our exclusive Club 18*21 event.

CLUB 18*21 - STORM THE VIBE

Vibe, Deck 10, Midship - 11:15 p.m.
 Join your fellow cruisers aged 18 to 21 as we storm the vibe.

ART OF THE THEME SHOW TOUR

Palo, Deck 10, Aft - 9:30 a.m.
 Join us on a guided ship tour and discover the key ingredients that make the Disney Magic.

ANYONE CAN COOK - DAZZLING DESSERT

D Lounge, Deck 4, Midship - 10:30 a.m.
 Learn to create mouth-watering sweets like a professional pastry chef with easy to follow decadent recipes.

ULTIMATE DISNEY TRIVIA #2

O'Gills Pub, Deck 3, Forward - 2:15 p.m.
 Think you know all there is to know about Disney? Come test your knowledge at ultimate Disney trivia for the Adults.

70'S MUSIC TRIVIA

O'Gills Pub, Deck 3, Forward - 7:45 p.m.
 Let's step back in time and visit Studio 54 as we test your 70's music knowledge.



FUN FOR ALL AGES HIGHLIGHTS

PHOTO CHALLENGE - ARTWORK

Port Adventures Desk, Deck 3, Midship
 Stop by the Port Adventures Desk, Deck 3 Midship, to pick up the second of our 4 photo challenges of the cruise. Complete at your own leisure but please return the form before 10:00 p.m. tonight. The winner will be announced during tomorrow's Morning Show.

MORNING SHOW

Promenade Lounge, Deck 3, Aft - 9:30 a.m.
 Tune in to channel 27-5, or join us in Promenade Lounge for your Cruise Director's Morning Show, as they discuss all the top tips and must-see events of the day.

YOUTH ACTIVITIES OPEN HOUSE: MICKEY'S PUZZLE PLAYTIME

Disney's Oceaneer Club, Deck 5, Midship - 9:45 a.m.
 Come and Play with Mickey & friends as they share their favorite games, puzzles and dances!

CHARLES RICHARDSON: ISLANDS OF THE ATLANTIC

Animator's Palate, Deck 4, Aft - 10:30 a.m. & 12:15 p.m.
 Discover why islands, including Madeira, crop up throughout the Atlantic Ocean.

SENSES SPA BINGO

Fathoms, Deck 3, Forward - 11:30 a.m.
 Four CASH prizes to be won! Plus great spa prizes that will pamper you, including a mini facial and massages all courtesy of the Senses Spa and Salon. Serenity now! Pre Sales start 15 minutes prior to game.



CHIP-IT GOLF WITH THE CAPTAIN (12+)

Lobby Atrium, Deck 3, Midship - 11:00 a.m.
 It's par for the course for our Guests to compete against the Captain, on our special "greens" in this fun tournament. Please sign up 15 minutes prior. Limited availability.



CRAFTS: BOAT BUILDING

Promenade Lounge, Deck 3, Aft - 12:30 p.m.
 Are you signed up for our Boat Building challenge? Need some advice or assistance? The Cruise Staff team are here to help! If not already signed up, it's not too late, simply check in with your Cruise Staff team.



DANCE CLASS: TANGO

Fathoms, Deck 3, Forward - 2:15 p.m.
 Join dance instructors Beverly and Curtis as they teach you the basics of the Tango.

\$5,000 MEGA JACKPOT BINGO

Fathoms, Deck 3, Forward - 4:15 p.m.
 Don't miss your chance to take home big money! 4 CASH prize games and great raffle prizes to be won! Complete the fourth game in 46 numbers or less and win the \$5,000 Mega Jackpot! Pre Sales start 15 minutes prior to game.



JEWISH SABBATH

Keys, Deck 3, Forward - 5:30 p.m.
 A quiet space is reserved for those wishing to conduct their own service.

YOUTH ACTIVITIES OPEN HOUSE: PISTON CUP CHALLENGE

Disney's Oceaneer Lab, Deck 5, Midship - 10:30 p.m.
 It's Dinoco time and you're part of the pit crew! Design your own race car and see if you've got what it takes to end up in the Winner's Circle!

YOUTH ACTIVITIES HIGHLIGHTS

DINE & PLAY

As a convenience for families dining at 8:30 p.m., our Youth Activities Counselors will be available at 9:30 p.m. at the entrance of Lumiere's and Carioca's and 9:45 p.m. at Animator's Palate to bring registered children to join the fun in Disney's Oceaneer Club and Disney's Oceaneer Lab.



Deck 5, Aft (7-5864) 8:30 a.m. - 11:30 p.m.

Infants and Toddlers can enjoy toys and activities at It's a Small World Nursery. Reservations are first come, first served so please stop by!



Deck 5, Midship (7-1440) 9:30 a.m. - 12:00 mid
(3-12 years old)

MAGIC SHOW

1:15 p.m.

The Magnificent Magician will demonstrate to you some of the best known magic tricks on the sea.

HEFFALUMP HUNTING

3:00 p.m.

Come look for Heffalumps on this fun hunt.



Deck 5, Midship (7-1445) 9:30 a.m. - 12:00 mid
(3-12 years old)

HATS OFF TO PETER PAN

10:30 a.m.

You'll believe you can fly. All it takes is faith, trust, and pixie dust and a special visit from Peter Pan! Rediscover the magic of Neverland!

SUPER SLOPPY SCIENCE

4:00 p.m.

Join Professor Make-O-Mess in some of the most extreme experiments you will ever see in the world of Super Sloppy Science!



Deck 2, Midship (7-5816) 10:00 a.m. - 1:00 a.m.
(11-14 years old)

SCAVENGER HUNT

4:00 p.m.

A little friendly competition exploring the ship; see if you can solve the clues and finish first.

ANIMATION CELLS

9:30 p.m.

Learn what it takes to be a Disney Animator, then put your new skills to the test as you create your very own animation cell.



Deck 10, Midship (7-18517) 10:30 a.m. - 12:00 mid
(14-17 years old)

DODGEBALL

12:00 mid

Take over the Wild World of Sports Deck to throw, dodge and duck! It's a fast paced and fun game.

GENDER WARS

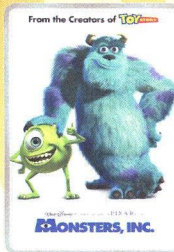
10:00 p.m.

Join us as we find out who really are the king or queen of the castle.

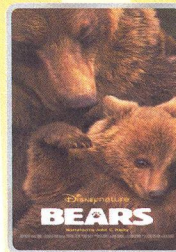
BUENA VISTA THEATRE

Deck 5, Aft
Today's Movies

DOLBY 3D



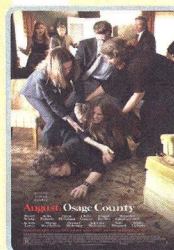
8:30 a.m.
Duration:
1 hr 32 mins
Rating: G



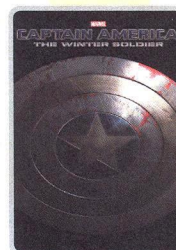
10:30 a.m.
Duration:
1 hr 25 mins
Rating: G



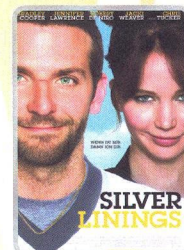
12:15 p.m.
Duration:
2 hrs 16 mins
Rating: PG-13



3:00 p.m.
Duration:
2 hrs 1 min
Rating: R



5:30 p.m. & 8:15 p.m.
Duration:
2 hrs 16 mins
Rating: PG-13



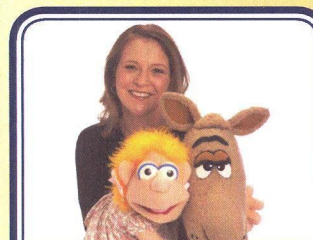
11:00 p.m.
Duration:
2 hrs 2 mins
Rating: R



DECK PARTY

Get ready for a jammin', slammin', splash splashin' good time at the new Disney Channel Poolside Jam Fest at Sea! Imagine all of your favorite Disney Channel music stars coming together for an afternoon of contests, great music, and hot video's all under the Caribbean sun!

**Deck Stage,
Deck 9, Midship,
1:00 p.m.**



ADULT VARIETY

Featuring the Comedy & Ventriloquism of Lynn Trefzger, as she entertains you in this adult exclusive show.

**Walt Disney Theatre (18+),
Deck 4, Forward,
10:45 p.m.
(Doors open at 10:30 p.m.)**

YOUTH ACTIVITIES OPEN HOUSE

Open House is an opportunity for all to come and participate in a variety of exciting activities and free time in the Oceaneer Club, Oceaneer Lab, Edge, Vibe, and It's a Small World Nursery throughout the cruise. During these times secured programming will still be offered in the other venues for those looking to check their children into care.

Vibe: 11:00 a.m. - 12:30 p.m.
Edge: 10:00 a.m. - 12:00 p.m.

Disney's Oceaneer Club: 9:30 a.m. - 11:00 a.m.
Disney's Oceaneer Lab: 2:00 p.m. - 5:30 p.m.
Disney's Oceaneer Lab: 10:00 p.m. - 12:00 mid

MORE TO ENJOY WHILE ONBOARD



PLAN YOUR NEXT GETAWAY NOW

Our 3 and 4 night Bahamian Cruises are a perfect way to get an instant tropical recharge! Departing from Miami or Port Canaveral, most Bahamian cruises include a stop at Disney's private island, Castaway Cay. Visit the Onboard Sales Desk today and ask about our special onboard booking offer.



DISNEY VACATION CLUB

Visit the Disney Vacation Club information desk and ask us about show times where you will learn how to turn every vacation into the vacation of a lifetime.

CURRENCY EXCHANGE

Euros will be available for exchange at Guests Services, Deck 3, Midship, 24 hours a day. Please be advised that local currency, other than Euros, will NOT be exchanged onboard.

QUARTER MASTERS ARCADE

Show what you've got on your journey on an underwater mission in Sea Wolf, or aim to win an awesome underwater camera in Master Key. Quarter Masters Arcade, located on Deck 9, Midship.

Connect @ Sea

We are now offering a NEW and improved Internet service to stay connected on your cruise like no other in the industry! Internet packages range from \$0.25 per MB - \$89.00 (1000 MB package). For more information contact your Connect@Sea Expert or Guest Services onboard.



IONITHERIME SLIMMING TREATMENT

Loss between 1 - 8 inches, speed up your metabolism, rid off puffiness, smooth your skin and firm your muscle without any pain of hard exercise!

Deck 9, Forward - Phone : 7-1465



The best way to explore our ports of call is through the eyes of a Port Adventure! Enjoy the panoramic views of Camara de Lobos in Madeira during the Charms of Old Madeira tour or explore the historic Alhambra Castle, showcasing the influences of the 13th and 14th centuries, during a guided tour. Stop by the Port Adventures Desk located on Deck 3 Midship where our team will be delighted to help you plan your vacation.

SHOPPING

SOPHIA FIORI

Industry leaders in vivid colored diamonds, and more specifically Caribbean blue diamonds - one of the single most popular purchases at sea because it reminds everyone of the colors of the breathtaking ocean!

WHITE CAPS

Deck 4, Forward

Sophia Fiori



DISNEY CRUISE LINE TRANSATLANTIC CROSSING TEE AVAILABLE

Visit White Caps today where you can get the specially designed Transatlantic Crossing t-shirt! Deck 4, Forward.

RED CARPET SOPHIA FIORI DIAMOND UNVEILING

Drop in at White Caps today to meet the diamond specialist with Sophia Fiori. Whether you are a Hollywood celebrity or a full time Mom, every woman experiences a Red Carpet Moment when putting on Sophia Fiori Jewelry so treat yourself, you deserve it! Deck 4, Forward.



PHOTO PACKAGES

Shutters has a variety of great photo packages available to preserve your cruise memories. Visit Shutters Deck 4, Aft for more information.

BEAUTIFULLY DISNEY

Captivate your mind with Beautifully Disney, a new collection of cosmetics and beauty product. Beautifully Disney defines timeless beauty through collections of fairytale nostalgia, unlocking harmonious colors. Through the collections of this new and enchanting line, it is the goal to keep you romanced by the contrast of mysterious yet inviting colors. Available at White Caps, Deck 4, Midship.

NEW DISNEY CRUISE LINE COMPASS COLLECTION MERCHANDISE

Visit White Caps and check out the wide selection of merchandise from the new Compass collection. From t-shirts to mugs featuring nautical and Disney Cruise Line themed icons, commemorate your Disney cruise with one of these great souvenirs. Deck 4, Forward.

DM8607 05-23-2014 ©DISNEY

IMPORTANT INFORMATION

Security Notice

All Guests (including Children) who wish to disembark or embark the ship are required to present their Key to the World card at the gangway. A photo ID is also required for those Guests who are 18 years of age or older. Guests under the age of 18 are required to have a parent, guardian or other responsible adult sign an authorization form at the Guest Service Desk if they wish to go ashore unaccompanied or with any adult from another stateroom.

Sunscreen/Insect Repellent Advisory
Use sunscreen first and protect against mosquito borne illnesses by applying insect repellent on top of sunscreen when going ashore.

Cold and Flu Reminder

Please wash hands frequently and thoroughly, particularly before meals. Contact the Health Center by dialing 7-1923, should anyone in your party become ill.

Inclement Weather

For the safety of all Guests, outdoor events may be changed due to unforeseen weather conditions.

Corridor Quiet Hours

As a courtesy to all our Guests, please recognize quiet hallway hours from 10:00 p.m. til 8:00 a.m.

Environmental Message

With Disney's commitment to the Environment please refrain from throwing anything over the Ship's side. Thank you.

No Reserved Seats Policy

As a courtesy to all Guests we kindly advise that the saving of seats is not permitted in the Walt Disney Theatre, and the saving of the sun loungers is not permitted on Deck 9 and 10. Items left unattended will be returned to lost and found at Guest Services, Deck 3, Midship.

Smoking

For the comfort of our guests, the following areas are designated as smoking areas:
• Deck 10 Forward, Starboard Side
• Deck 9, Forward, Starboard Side at Quiet Cove
• Deck 4, Starboard Side from 6:00 p.m. to 6:00 a.m. only (all of Deck 4 is non-smoking from 6:00 a.m. to 6:00 p.m.)
Smoking is prohibited inside all guest staterooms and on stateroom verandahs. Guests found smoking in their staterooms or on their verandahs will be charged a \$250 stateroom recovery fee.

Walt Disney Theatre

Theatrical performances may use artificial fog, strobe lights, pyrotechnics and other special effects. For the safety of our performers and the comfort of those around you, the use of any photography or video recording device or any electronic equipment is prohibited.

Verandah Safety

Please do not leave any combustible materials on your balcony when not present in your stateroom for safety reasons.

Morning	8:30	8:45	9:00	9:15	9:30	9:45	10:00	10:15	10:30	10:45	11:00	11:15	11:30	11:45	12:00	12:15	12:30	12:45	1:00	1:15	1:30	
FUNNEL VISION	Robin Hood (G) Funnel Vision						Beauty & the Beast (G) Funnel Vision						DJ Matt Funnel Vision						Jam Fest at Sea Funnel Vision			
BUENA VISTA THEATRE	Monsters, Inc. (G) Duration: 1 Hour 32 Minutes						Disneynature: Bears (G) Duration: 1 Hour 25 Minutes						Captain America: The Winter Soldier (PG-13) Duration: 2 Hours 16 Minutes						DOLBY 3D			
CHARACTERS	Minnie & Daisy Gazebo						Captain America Preludes			Chip & Dale Gazebo			Captain America Preludes			Mickey Dk 4, Mid		Minnie Dk 4, Mid		Hook & Snee Lobby Atrium (P)		
FUN FOR ALL AGES	Toddler Time It's a Small World Nursery		Walk A Mile Preludes		Morning Show Promenade Lounge		Charles Richardson: Islands of the Atlantic Animator's Palette			Bingo Pre Sales		Senses Spa BINGO Fathoms		Charles Richardson: Islands of the Atlantic Animator's Palette		JAM FEST Deck Stage						
	Mickey's Puzzle Playtime Disney's Oceaneer Club						Become Iron Man! Disney's Oceaneer Club			Chip-It Golf (12+) Lobby Atrium		Crafts: Door Hangers Promenade Lounge		Crafts: Boat Building Promenade Lounge		Improv Shmimprov Workshop Fathoms						
ADULTS	Friends of Bill W. Keys		Wake Up & Stretch Class Senses Spa Fitness Center		Art of The Theme Show Tour Palo						Book Exchange Cove Cafe		Dazzling Dessert D Lounge		Club 18*21 - Brunch Lumiere's		Singles' Brunch Lumiere's		Rum Tasting (21+) Keys		Cigar Seminar D Lounge	
VIBE 14-17 YEARS OLD							Coffee Break			Youth Activities Open House						Xbox Challenge						
EDGE 11-14 YEARS OLD							Youth Activities Open House						Trivia Challenge									
OCEANEER LAB 3-12 YEARS OLD							Hats Off to Peter Pan						Lunch									
OCEANEER CLUB 3-12 YEARS OLD							Youth Activities Open House						Memory Wall		Lunch		Magic Show					
							Mickey's Puzzle Playtime			Become Iron Man!												

Symbol for activities that will be repeated during the cruise

Afternoon	1:45	2:00	2:15	2:30	2:45	3:00	3:15	3:30	3:45	4:00	4:15	4:30	4:45	5:00	5:15	5:30	5:45	6:00	6:15	6:30	6:45
FUNNEL VISION	A Bug's Life (G) Funnel Vision						Wreck-It Ralph (PG) Funnel Vision						The Muppets (PG) Funnel Vision								
BUENA VISTA THEATRE							August: Osage County (R) Duration: 2 Hours 1 Minute						Captain America: The Winter Soldier (PG-13) Duration: 2 Hours 16 Minutes								
CHARACTERS	Chip & Dale Dk 4, Mid								Cinderella Dk 4, Mid						Rapunzel Dk 4, Mid						
FUN FOR ALL AGES	Dance Class - Tango Fathoms		Disney Vacation Club Group Preview D Lounge			Bingo Pre Sales		\$5,000 MEGA Jackpot BINGO Fathoms		Ballroom Dancing Fathoms		Jewish Sabbath Keys		Showtime: The Magic & Illusion of Kyle Knight & Mistie Walt Disney Theatre							
	Crafts: Origami Hearts Promenade Lounge			Animation Cells Disney's Oceaneer Lab			Super Sloppy Science Disney's Oceaneer Lab		Toddler Time Promenade Lounge		Live Music with Midtown Promenade Lounge										
ADULTS	Club 18*21 - Scavenger Hunt O'Gills Pub		Ultimate Disney Trivia O'Gills Pub			Crafts: Origami Hearts O'Gills Pub			Adult Trivia O'Gills Pub		Abs Attack Senses Spa Fitness Center		Group Cycling Senses Spa Fitness Center								
VIBE 14-17 YEARS OLD							Animation Antics			Scavenger Hunt						Game Challenge					
EDGE 11-14 YEARS OLD	Super Sloppy Science						Scavenger Hunt						Youth Activities Open House								
OCEANEER LAB 3-12 YEARS OLD	Youth Activities Open House												Dinner								
OCEANEER CLUB 3-12 YEARS OLD							Heffalump Hunting						Dinner								

Fold along the dotted lines and take me with you so you don't miss any of the fun!

Evening	7:00	7:15	7:30	7:45	8:00	8:15	8:30	8:45	9:00	9:15	9:30	9:45	10:00	10:15	10:30	10:45	11:00	11:15	11:30	11:45	12:00
FUNNEL VISION							The Nightmare Before Christmas (PG) Funnel Vision						Dadnapped (TV-G) Funnel Vision								
BUENA VISTA THEATRE							Captain America: The Winter Soldier (PG-13) Duration: 2 Hours 16 Minutes						Silver Linings Playbook (R) Duration: 2 Hours 2 Minutes								
CHARACTERS	Sofia Lobby Atrium (P)		Hook & Snee Dk 4, Mid		Rapunzel Lobby Atrium (P)						Cinderella Lobby Atrium (P)										
FUN FOR ALL AGES	Ballroom Dancing Fathoms		Disney Tunes Trivia Promenade Lounge			Family Dance Party D Lounge			70's Music Trivia O'Gills Pub		DJ Matt Fathoms		Live Music with Duo Azucar Promenade Lounge		Live Music with Duo Azucar Promenade Lounge		Piston Cup Challenge Disney's Oceaneer Lab				
	Showtime: The Magic & Illusion of Kyle Knight & Mistie Walt Disney Theatre						Family Superstar Karaoke D Lounge		Adult Variety: Lynn Trefzger Walt Disney Theatre				Club 18*21 - Storm the Vibe Vibe								
ADULTS	Live Piano with Aileen de la Cruz Keys						Aileen de la Cruz Keys			Club 18*21 - Mixer O'Gills Pub		Adult Variety: Lynn Trefzger Walt Disney Theatre		Club 18*21 - Storm the Vibe Vibe							
VIBE 14-17 YEARS OLD	Smoothie Hour						Gotcha Registration			Gender Wars			Karaoke Challenge								
EDGE 11-14 YEARS OLD	Open House						Game Challenge						Animation Cells								
OCEANEER LAB 3-12 YEARS OLD	Pinata Party						GAGA Ball						Youth Activities Open House								
OCEANEER CLUB 3-12 YEARS OLD	Carnival Extravaganza						Become Iron Man!						Piston Cup Challenge								
													Movie Time								

IN THE SPOTLIGHT SERIES
JUMP UP! SERIES
CREATE & INVENT SERIES
OPEN HOUSE
CLUBHOUSE SERIES
STORYBOOK SERIES

FRIDAY, MAY 23, 2014 - DAY AT SEA

BUENA VISTA THEATRE

Deck 5, Aft

DOLBY 3D



8:30 a.m. Duration: 1 hr 32 mins Rating: G	10:30 a.m. Duration: 1 hr 25 mins Rating: G	12:15 p.m. Duration: 2 hrs 16 mins Rating: PG-13	3:00 p.m. Duration: 2 hrs 1 min Rating: R	5:30 p.m. & 8:15 p.m. Duration: 2 hrs 16 mins Rating: PG-13	11:00 p.m. Duration: 2 hrs 2 mins Rating: R
--	---	--	---	--	---

Character Appearances

MINNIE & DAISY
Gazebo - 10:00 a.m.

MINNIE MOUSE
Deck 4, Midship - 1:15 p.m.

DONALD DUCK
Gazebo - 10:30 a.m.

CAPTAIN HOOK & MR SMEE
Lobby Atrium (P) - 1:30 p.m.
Deck 4, Midship - 7:45 p.m.

CAPTAIN AMERICA
Preludes
10:45 a.m. & 12:00 p.m.

CINDERELLA
Deck 4, Midship - 5:30 p.m.
Lobby Atrium (P) - 10:15 p.m.

MICKEY & PLUTO
Gazebo - 11:00 a.m.

RAPUNZEL
Deck 4, Midship - 6:00 p.m.
Lobby Atrium (P) - 9:45 p.m.

CHIP & DALE
Gazebo - 11:30 a.m.
Deck 4, Midship - 1:45 p.m.

PRINCESS SOFIA
Lobby Atrium (P) - 7:15 p.m.

PETER PAN
Lobby Atrium (P) - 12:30 p.m.
Deck 4, Midship - 7:15 p.m.

MICKEY MOUSE
Deck 4, Midship - 12:45 p.m.

JAKE - THE NEVERLAND PIRATE
Lobby Atrium (P)
1:00 p.m. & 7:45 p.m.



(P) - Portside, (S) - Starboard Side

Don't forget your Camera to capture those Magical Moments!
Check here each day for Character appearances.
For detailed Character appearance information see the Character Information Board in the Lobby Atrium.
Meet-and-Greets will be advertised for the length of time the line will be open. To avoid disappointment, please meet at start time of appearances.

YOUTH ACTIVITIES THEMED EXPERIENCES

CLUBHOUSE SERIES
focuses on movement and features content which appeals to younger children.

JUMP UP! SERIES
includes large group games & movement-oriented activities.

IN THE SPOTLIGHT SERIES
focuses on children's stage presence with lots of activities and enthusiasm.

STORYBOOK SERIES
is designed with a strong connection to the Disney classic stories.

CREATE & INVENT SERIES
will have a tactile focus allowing children to create and admire their work.

SOLVE IT! SERIES
are less active, but will challenge children with problem/solutions-based activities.

YOUTH ACTIVITIES OPEN HOUSE

Activities for families, adults and children of all ages to enjoy together.

SHIP DIRECTORY

YOUTH ACTIVITIES

DISNEY'S OCEANEER CLUB	DECK 5, MID	9:30 AM - 12:00 MID
DISNEY'S OCEANEER LAB	DECK 5, MID	9:30 AM - 12:00 MID
EDGE	DECK 2, MID	10:00 AM - 1:00 AM
IT'S A SMALL WORLD NURSERY	DECK 5, AFT	8:30 AM - 11:30 PM
VIBE	DECK 10, MID	10:30 AM - 12:00 MID

POOLS

*Children under 12 years of age must have adult supervision in all pools.

AQUADUNK	DECK 10, MID	10:00 AM - 6:00 PM
AQUALAB	DECK 9, AFT	9:00 AM - 9:00 PM
GOOFY'S POOL	DECK 9, MID	10:00 AM - 8:00 PM
NEPHEWS' SPLASH ZONE	DECK 9, AFT	9:00 AM - 6:00 PM
QUIET COVE POOL (18+)	DECK 9, FWD	6:00 AM - 11:59 PM
TWIST 'N' SPOUT	DECK 9, AFT	10:00 AM - 6:00 PM

RECREATION

PORT ADVENTURES DESK	DECK 3, MID	10:00 AM - 5:00 PM
SENSES FITNESS CENTER (18+)	DECK 9, FWD	6:30 AM - 10:00 PM
WIDE WORLD OF SPORTS DECK	DECK 10, FWD	24 HOURS

GENERAL INFORMATION

BUENA VISTA THEATRE	DECK 5, AFT	SHOWTIMES
DISNEY VACATION CLUB DESK	DECK 4, MID	9:00 AM - 3:00 PM 4:30 PM - 10:00 PM
ONBOARD SALES DESK	DECK 4, MID	9:30 AM - 12:00 PM 3:00 PM - 6:00 PM 7:00 PM - 10:00 PM
FUNNEL VISION	DECK 9, MID	SHOWTIMES
GUEST SERVICES	DECK 3, MID	24 HOURS
HAIR BRAIDING	DECK 9, MID	9:00 AM - 6:00 PM
MEDICAL HEALTH CENTER	DECK 1, FWD	9:30 AM - 11:00 AM 4:30 PM - 7:00 PM
PORT & SHOPPING DESK	DECK 3, MID	
PRELUDES	DECK 4, FWD	5:30 PM - 9:00 PM
QUARTER MASTERS (ARCADE)	DECK 9, MID	24 HOURS
SENSES SPA AND SALON	DECK 9, FWD	8:00 AM - 10:00 PM
SHUTTERS PHOTO GALLERY	DECK 4, AFT	10:00 AM - 10:00 PM
WALT DISNEY THEATRE	DECK 4, FWD	SHOWTIMES

SHOPPING

MICKEY'S MAINSAIL	DECK 4, FWD	10:00 AM - 10:00 PM
QUACKS	DECK 9, MID	10:30 AM - 4:00 PM
SEA TREASURES	DECK 3, FWD	2:00 PM - 10:00 PM
VISTA GALLERY	DECK 4, MID	11:00 AM - 2:00 PM 4:00 PM - 10:00 PM
WHITE CAPS	DECK 4, FWD	10:00 AM - 10:00 PM

IMPORTANT NUMBERS

Fire/Security: 7-3001
Medical EMERGENCY: 7-3000
Health Center: 7-1923

DINNER MENU

Animator's Palate: Transatlantic
Carioca's: Transatlantic
Lumiére's: Transatlantic
Dining Times: 6:00 p.m. & 8:15 p.m.

DRINK OF THE DAY

True Colors (Alcoholic)
Espresso Freeze (Non - Alcoholic)

WEATHER FORECAST

Today: Partly Sunny
High: High: 74 F/23 C
Tomorrow: Partly Sunny
High: High: 74 F/23 C

Evening Attire: Cruise Casual

DINING & LOUNGES

BREAKFAST

CABANAS	DECK 9, AFT	7:30 AM - 11:30 AM
DAISY'S DE LITES	DECK 9, AFT	7:00 AM - 9:00 AM
LUMIÈRE'S BRUNCH	DECK 3, MID	9:00 AM - 12:30 PM
PALO (FOR RESERVATIONS CALL 7-6843)	DECK 10, AFT	10:00 AM - 1:30 P.M.

LUNCH

CABANAS	DECK 9, AFT	11:30 AM - 3:00 PM
DAISY'S DE LITES	DECK 9, AFT	11:00 AM - 6:00 PM
LUMIÈRE'S BRUNCH	DECK 3, MID	9:00 AM - 12:30 PM
PALO (FOR RESERVATIONS CALL 7-6843)	DECK 10, AFT	10:00 AM - 1:30 P.M.
PETE'S BOILER BITES	DECK 9, AFT	11:00 AM - 6:00 PM
PINOCCHIO'S PIZZERIA	DECK 9, MID	11:00 AM - 6:00 PM

DINNER

ANIMATOR'S PALATE	DECK 4, AFT	6:00 PM & 8:30 PM
CABANAS TABLE SERVICE	DECK 9, AFT	6:30 PM - 8:30 PM
CARIOCA'S	DECK 3, AFT	6:00 PM & 8:30 PM
LUMIÈRE'S	DECK 3, MID	6:00 PM & 8:30 PM
PALO (FOR RESERVATIONS CALL 7-6843)	DECK 10, AFT	6:00 PM - 8:30 PM
PETE'S BOILER BITES	DECK 9, AFT	6:00 PM - 10:00 PM

LATE NIGHT SNACKS

O'GILLS PUB	DECK 3, FWD	10:45 PM - 11:45 PM
PINOCCHIO'S PIZZERIA	DECK 9, MID	9:30 PM - 12:00 MID
PROMENADE LOUNGE	DECK 3, AFT	10:45 PM - 11:45 PM

ADDED FEATURES

EYE SCREAM	DECK 9, AFT	11:00 AM - 11:00 PM
BEVERAGE STATION	DECK 9, AFT	24 HOURS
ROOM SERVICE	DIAL 7-4330	24 HOURS

ENTERTAINMENT - LOUNGES - BARS

Adults must be 21 and older to consume alcoholic beverages.

AFTER HOURS	DECK 3, FWD	(AFTER 9:00 P.M. ADULTS ONLY)
COVE CAFE (18+)	DECK 9, MID	7:00 AM - 12:00 MID
D LOUNGE	DECK 4, MID	SHOWTIMES
FATHOMS (18+)	DECK 3, FWD	7:00 PM - 2:00 AM
FROZONE TREATS	DECK 9, AFT	11:00 AM - 8:00 PM
INTERNET CAFE	DECK 3, AFT	24 HOURS
KEYS (18+)	DECK 3, FWD	5:30 PM - 12:30 AM
O'GILLS PUB (18+)	DECK 3, FWD	12:00 PM - 12:30 AM
PRELUDES	DECK 4, FWD	5:30 PM - 9:00 PM
PROMENADE LOUNGE	DECK 3, AFT	9:00 AM - 12:00 MID
PINOCCHIO'S PIZZERIA	DECK 9, MID	9:00 AM - 12:00 MID
SIGNALS (18+)	DECK 9, FWD	9:30 AM - 10:30 PM

Public Health Advisory: Consuming raw or undercooked meats, poultry, seafood, shellfish, or eggs may increase your risk for foodborne illness, especially if you have certain medical condition.



Explore and more with our carefully selected Port Adventures. Pass by the Port Adventures Desk, Deck 3, Midship to find out more.