

# PERSONAL NAVIGATOR



Sunrise: 7:16 a.m. Sunset: 9:03 p.m.  
Evening Attire: Pirate or Cruise Casual

Today: Sunny High: 72°F/22°C  
Tomorrow: Sunny High: 72°F/22°C

SUNDAY, MAY 25, 2014

DAY AT SEA

From the Cavern to the Rooftops

## THE BEATLES

A Musical Celebration

### WALT DISNEY THEATRE

Deck 4, Forward,

6:30 p.m. & 8:45 p.m.

As a courtesy to all Guests, we kindly advise that the saving of seats is **not** permitted in the Walt Disney Theatre.



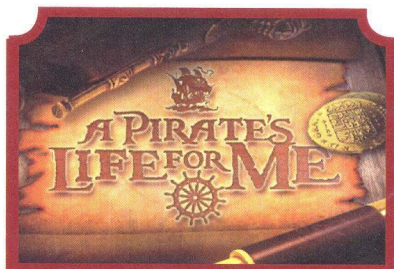
Assistance available at the entrance to the Walt Disney Theatre 30 minutes prior to show time.

## Disney MAGIC STEERING COMMITTEE



**BRENT DAVIES - CRUISE DIRECTOR**

Brent joined Disney Cruise Line in 1999. Prior to starting a life at sea Brent worked for many years within the hospitality and leisure industry across his home country of Australia. To complement this experience Brent gained a Bachelors Degree of Applied Science from the University of Ballarat. As the opening Cruise Director of the Disney Fantasy, Brent mentions the launch of the Disney Dream and Fantasy as career highlights.



### GAME SHOW

Calling all Pirates, we be! If ye have an adventurous spirit or pirate savvy, come spin the "Wheel of Destiny" for a treasure trove of fun be ripe for the takin' in this action packed pirate game show.

D Lounge,  
Deck 4, Midship,  
7:45 p.m.

## Don't Miss:

**Ho Ho Ho; Pirates We Don't Want to Be** Featuring Charles Richardson

*Animator's Palate, Deck 4, Aft - 10:30 a.m. & 1:00 p.m.*

Join Charles Richardson for the true story of pirates, and the hardships they endured.

**Cruise Director vs. the Captain Wii Challenge**

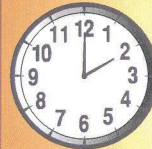
*Deck Stage, Deck 9, Midship - 12:15 p.m.*

Who will win? Pick a side - it is time for your Cruise Director Brent to take on Captain John in this competitive Wii Bowling Challenge.

**Q & A with Jeanne Lehman**

*Fathoms, Deck 3, Forward - 1:00 p.m.*

Join Jeanne for this Q&A Session to understand more of her career on Broadway and hear some great stories that she has to share.



### TIME ZONE CHANGE

Remember to turn your clocks **FORWARD 1 HOUR** upon retiring on **SUNDAY** evening, or first thing **MONDAY** morning.

Disney Cruise Line



Stop by the Port Adventures Desk, located on Deck 3, Midship, where our friendly team will assist you to plan your adventure to our ports of call!

## DINNER MENU

Animator's Palate: Pirate's Menu  
Carioca's: Pirate's Menu  
Lumiére's: Pirate's Menu

## DRINK OF THE DAY

Sunken Treasure (Alcoholic)  
Parrot Song (Non Alcoholic)

### IMPORTANT NUMBERS

Fire/Security: 7-3001  
Medical Emergency: 7-3000  
Health Center: 7-1923



# ADULT ACTIVITY HIGHLIGHTS

## SENSES SPA FITNESS CLASSES & SEMINARS

*Stretch & Relax* - Senses Spa Fitness Center - 8:00 a.m.  
*Body Sculpt Boot Camp* - Senses Spa Fitness Center - 9:00 a.m.  
*Abs Attack* - Senses Spa Fitness Center - 10:00 a.m.  
*Arthritis and Back Pain Solutions* - Keys - 10:15 a.m.  
*Relieving Back Pain* - Senses Spa & Salon - 11:00 a.m.  
*Ionthermie Seminar* - Senses Spa & Salon - 11:45 a.m.  
*Eat More to Weigh Less* - Senses Spa & Salon - 2:30 p.m.  
*Skin Therapy Seminar* - Senses Spa & Salon - 3:15 p.m.  
*How to Increase Your Metabolism* - Senses Spa & Salon - 4:00 p.m.  
*Pilates* - Senses Spa Fitness Center - 5:00 p.m.



## TASTING CLASSES

*Chocolate & Liquor Tasting* (21+) - Keys - 12:30 p.m.  
*Italian Liquor Tasting* (21+) - Cove Cafe - 10:30 p.m.  
 Please make reservations for tastings at Guest Services for a nominal fee.  
 Tasting Seminars are only for Guests 21 and Older.

## CLUB 18\*21 - BRUNCH

*Lumiere's, Deck 3, Midship - 11:30 a.m.*  
 Get to know your fellow 18\*21 guests during brunch.

## CLUB 18\*21 - MIXER

*Quiet Cove Pool, Deck 9, Forward - 9:45 p.m.*  
 Come to join fellow cruisers your own age at our exclusive Club 18\*21 event.

CLUB  
18\*21

## ANYONE CAN COOK: ENTREE #2

*D Lounge, Deck 4, Midship - 10:30 a.m.*  
 Every Chef has a specialty, and ours is no exception. Get a taste of perfection with today's recipe. Followed by our Art of Tea Seminar at 1:00 p.m.



## PUB QUIZ #2

*O'Gills Pub, Deck 3, Forward - 7:45 p.m.*  
 Join us for the second installment of our Pub Quiz challenge.

## KRAZY KARAOKE

*Fathoms, Deck 3, Forward - 11:00 p.m.*  
 Take to the stage, grab a microphone and sing your favorite tunes with your Club Host and DJ.



# FUN FOR ALL AGES HIGHLIGHTS

## PHOTO CHALLENGE - COSTUMES

*Port Adventures Desk, Deck 3, Midship*  
 Stop by the Port Adventures Desk, Deck 3 Midship, to pick up the third of our 4 photo challenges of the cruise. Complete at your own leisure but please return the form before 10:00 p.m. tonight. The winner will be announced during tomorrow's Morning Show.

## MORNING SHOW

*Promenade Lounge, Deck 3, Aft - 9:30 a.m.*  
 Tune in to channel 27-5, or join us in Promenade Lounge for your Cruise Director's Morning Show, as they discuss all the top tips and must-see events of the day.

## \$7,000 MEGA JACKPOT BINGO

*Fathoms, Deck 3, Forward - 11:00 a.m.*  
 Don't miss your chance to take home big money! Four CASH prize games and a Disney Vacation Club sponsored raffle which includes a \$100 Onboard Credit and prize-packs. Complete the fourth game in 46 numbers or less and win the \$7,000 Mega Jackpot! Pre Sales start 15 minutes prior to game.

BINGO

## VOCAL COACHING WITH JEANNE LEHMAN

*Fathoms, Deck 3, Forward - 12:15 p.m.*  
 Have you ever wanted to feel like a Broadway Performer? Join Jeanne Lehman for a Vocal Coaching session and get a hands on experience, off-broadway.

## DANCE CLASS - CHA CHA

*Fathoms, Deck 3, Forward - 2:15 p.m.*  
 Join dance instructors Beverly and Curtis as they teach you the basics of the Cha Cha.

## MEGA RAFFLE JACKPOT BINGO

*Fathoms, Deck 3, Forward - 4:15 p.m.*  
 Four cash prizes and fun, Disney Cruise Line raffle prizes are up for grabs! Pre Sales start 15 minutes prior to game..

BINGO

## PIRATE PALOOZA

*Promenade Lounge, Deck 3, Aft - 4:45 p.m.*  
 Yo ho, matey's! Jump aboard, junior pirates, and get ready to set sail for fun and games at our Pirate Palooza!

**PIRATES IN THE CARIBBEAN**

**Pirates of The Caribbean: Challenge of Davy Jones**  
 9:40 p.m., Deck Stage  
 Join us on deck for a brand new interactive video game experience. You'll be the crew as we find out who is the better captain... Captain Jack or Captain Barbossa.

**Pirates IN The Caribbean**  
 10:00 p.m.  
 Decks 9 & 10  
 Mark the Spot

It's a Pirate Celebration, me hearties! Yer Disney Friends are all set for a swashbucklin' good time! Hoist yourself to Deck 9 to enjoy a rowdy buccaneer bash we call Pirates IN the Caribbean Deck Party.  
 (Weather Permitting)

Viewing areas located Deck 9 Midship port side gazebo and next to Pinocchio's Pizzeria port side.



# YOUTH ACTIVITIES HIGHLIGHTS

## DINE & PLAY

As a convenience for families dining at 8:30 p.m., our Youth Activities Counselors will be available at 9:30 p.m. at the entrance of Lumiere's and Carioca's and 9:45 p.m. at Animator's Palate to bring registered children to join the fun in Disney's Oceaneer Club and Disney's Oceaneer Lab.



**Deck 5, Midship (7-1440)**  
(3-12 years old) **9:30 a.m. - 10:30 p.m.**

### ALOHA LUAU

**11:15 a.m.**

It's party time, Hawaiian style! Come join us for a Luau experience and learn how to dance like Lilo & Stitch.

### SO YOU WANT TO BE A PIRATE?

**7:30 p.m.**

Have you learned about life on the high seas? Do you have what it takes to be a pirate? Join Captain Hook and friends to find out!



**Deck 5, Midship (7-1445)**  
(3-12 years old) **9:30 a.m. - 12:00 mid**

### GOOFY FILES

**11:00 a.m.**

This fascinating activity takes you into the invisible world of forensics where you will discover different ways to identify the suspect of a crime.

### ANYONE CAN COOK

**2:00 p.m.**

Anyone can cook as we work together to create some of our favorite treats.



**Deck 2, Midship (7-5816)**  
(11-14 years old) **10:00 a.m. - 1:00 a.m.**

### MAGIC SHOW

**1:00 p.m.**

The Magnificent Magician will demonstrate to you some of the best known magic tricks on the sea.

### A PIRATE'S LIFE FOR ME

**11:30 p.m.**

Yo ho, yo ho, a Pirate's Life for Me! Aarrgh me mateys! Put your knowledge to the test!



**Deck 11, Midship (7-18517)**  
(14-17 years old) **10:30 a.m. - 2:00 a.m.**

### SCAVENGER HUNT

**3:00 p.m.**

A little friendly competition exploring the ship; see if you can solve the clues and finish first.

### ANIMATION ANTICS

**2:00 p.m.**

Learn simple animation techniques and then put your new skills to use by drawing some of your favorite Disney Characters.

## YOUTH ACTIVITIES OPEN HOUSE

Open House is an opportunity for all to come and participate in a variety of exciting activities and free time in Disney's Oceaneer Club, Disney's Oceaneer Lab, Edge, Vibe, and It's a Small World Nursery throughout the cruise. During these times secured programming will still be offered in the other venues for those looking to check their children into care.

Vibe: 6:00 p.m. - 8:00 p.m.  
Edge: 10:00 a.m. - 12:00 p.m.

Disney's Oceaneer Lab: 3:30 p.m. - 5:30 p.m.  
Disney's Oceaneer Club: 9:30 a.m. - 11:00 a.m.

# BUENA VISTA THEATRE

Deck 5, Aft

## More Feature Movies This Voyage

### SUNDAY - DAY AT SEA

- 9:00 a.m. PG-13 Pirates of the Caribbean: The Curse of the Black Pearl
- 12:00 p.m. PG-13 Pirates of the Caribbean: Dead Man's Chest
- 3:00 p.m. PG-13 Pirates of the Caribbean: At World's End
- 6:15 p.m. G Disneynature: Bears
- 8:30 p.m. G Disneynature: Bears
- 11:00 p.m. PG-13 Pirates of the Caribbean: On Stranger Tides

### MONDAY - DAY AT SEA

- 8:30 a.m. PG The Incredibles
- 12:45 p.m. PG-13 Saving Mr. Banks
- 3:15 p.m. PG Mary Poppins
- 6:00 p.m. PG Planes
- 8:30 p.m. PG Planes
- 10:30 p.m. PG-13 Les Miserables

### TUESDAY - FUNCHAL (MADEIRA)

- 8:30 a.m. G Cars
- 1:15 p.m. G Ratatouille
- 3:30 p.m. G WALL-E
- 6:00 p.m. PG Up
- 8:15 p.m. PG Up
- 10:30 p.m. PG-13 Saving Mr. Banks

### WEDNESDAY - DAY AT SEA

- 8:30 a.m. G Toy Story 3
- 10:45 a.m. PG Muppets Most Wanted
- 1:00 p.m. PG Million Dollar Arm
- 3:30 p.m. R Argo
- 6:00 p.m. PG Frozen
- 8:15 p.m. PG Frozen
- 10:30 p.m. PG Million Dollar Arm

**DOLBY.3D**

**DOLBY.3D**

### THURSDAY - MALAGA

- 8:30 a.m. G Cars 2
- 10:45 a.m. PG Muppets Most Wanted
- 1:00 p.m. PG Frozen
- 3:15 p.m. PG-13 Captain America: The Winter Soldier **DOLBY.3D**
- 6:00 p.m. PG Million Dollar Arm
- 8:30 p.m. PG Million Dollar Arm

### FRIDAY - DAY AT SEA

- 8:30 a.m. PG Brave
- 6:30 p.m. G Disneynature: Bears
- 8:15 p.m. G Disneynature: Bears

Subject to Change.



# MORE TO ENJOY WHILE ONBOARD



## MORE MAGIC IN EUROPE

Set sail for Europe! Whether you choose the Mediterranean or northern Europe, you're sure to experience a magical voyage of culture with amazing family adventures - begin your journey today! Visit the Onboard Sales Desk to learn more about our special onboard booking offer.



## DISNEY VACATION CLUB® GROUP PREVIEW

Want to learn more about taking magical vacations year after year? Please see a Disney Vacation Club representative on Deck 4, Midship, or call 7-2805 from your stateroom phone for more information about our interactive group presentation.

## CURRENCY EXCHANGE

Euros will be available for exchange at Guests Services, Deck 3, Midship, 24 hrs a day. Not all currencies will be exchanged onboard, so please check with Guests Services for further information.

## Connect @ Sea

We are now offering a NEW and improved Internet service to stay connected on your cruise like no other in the industry! Internet packages range from \$0.25 per MB - \$89.00 (1000 MB package). For more information contact your Connect@Sea Expert or Guest Services onboard.

## QUARTER MASTERS ARCADE

You can drive a Hummer, be The Fast and The Furious, plus hop on a Crazy Taxi with no license required! All this at Quarter Masters Arcade, located on Deck 9, Midship.



Deck 9, Forward - Phone : 7-1465

### TODAY'S SPECIAL

Book any signature treatment today and receive a complimentary eye collagen treatment, scalp massage or back exfoliating treatment (worth of \$59).



A private vehicle is the perfect solution for Guests who wish to tour privately to our ports of call. Visit the Port Adventures Desk located on Deck 3, Midship for more details about the various vehicle offerings including sedans, mini-buses or vans during our transatlantic ports of call.

## SHOPPING

### PIRATE PARTY GEAR

Arrgh... It's time to embrace your inner pirate! Make your way to Mickey's Mainsail, Deck 4, Forward, to find a treasure trove of pirate gear! Everything from costumes and apparel to hats and accessories!

### PIRATE TRANSFORMATIONS WITH SKULLS & SCURRY

Pirates have taken over the Disney Magic Cruise Ship and are looking for rough scallywags to join their crew! Guests ages 3 and up will have the opportunity to be transformed into plundering pirates with Skulls & Scurry in time for Pirate Night. For more information, please see a Merchandise Host/Hostess at Mickey's Mainsail, Deck 4, Forward. All other pirate gear can be found tonight on Deck 9, Midship.

### JOIN THE CREW OR WALK THE PLANK

Sign ye up to plunder and pillage with pirate swords and eye patches, and find your very own pirate costume. All supplies for tonight's adventure can be gathered at Mickey's Mainsail, Deck 4, Forward and Quacks, Deck 9, Midship.

### GUESS

A global brand that symbolizes a worldwide leader in the fashion industry. Large selection of watches available in White Caps, Deck 4, Midship.

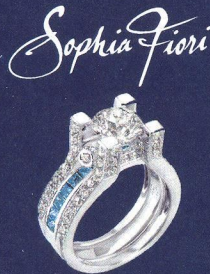
### LIGHT UP THE NIGHT

Glow merchandise is only available on Pirate Night! Don't miss your opportunity to light up the night! Please see a Merchandise Cast Member, Deck 9, on Pirate Night to complete your pirate attire!

SOPHIA FIORI  
DIAMOND TRUNK SHOW

Dazzling Diamonds,  
Tantalizing Tanzanite and  
many other Jewels.

WHITE CAPS  
Deck 4, Forward



Shutters

### LIFESTYLE PORTRAITS

The most popular family portraiture on board. We capture your personality with fun and excitement. Portrait set times are listed everyday in your daily Personal Navigator.

5:15 p.m. - 6:00 p.m., 7:30 p.m. - 8:30 p.m.,  
& 9:30 p.m. - 10:15 p.m.

## IMPORTANT INFORMATION

### Security Notice

All Guests (including Children) who wish to disembark or embark the ship are required to present their Key to the World card at the gangway. A photo ID is also required for those Guests who are 18 years of age or older. Guests under the age of 18 are required to have a parent, guardian or other responsible adult sign an authorization form at the Guest Service Desk if they wish to go ashore unaccompanied or with any adult from another stateroom.

**Sunscreen/Insect Repellent Advisory**  
Use sunscreen first and protect against mosquito-borne illnesses by applying insect repellent on top of sunscreen when going ashore.

### Cold and Flu Reminder

Please wash hands frequently and thoroughly, particularly before meals. Contact the Health Center by dialing 7-1923, should anyone in your party become ill.

### Inclement Weather

For the safety of all Guests, outdoor events may be changed due to unforeseen weather conditions.

### Corridor Quiet Hours

As a courtesy to all our Guests, please recognize quiet hallway hours from 10:00 p.m. til 8:00 a.m.

### Environmental Message

With Disney's commitment to the Environment please refrain from throwing anything over the Ship's side. Thank you.

### No Reserved Seats Policy

As a courtesy to all Guests we kindly advise that the saving of seats is not permitted in the Walt Disney Theatre, and the saving of the sun loungers is not permitted on Deck 9 and 10. Items left unattended will be returned to lost and found at Guest Services, Deck 3, Midship.

### Smoking

For the comfort of our guests, the following areas are designated as smoking areas:  
• Deck 10 Forward, Starboard Side  
• Deck 9, Forward, Starboard Side at Quiet Cove  
• Deck 4, Starboard Side from 6:00 p.m. to 6:00 a.m. only (all of Deck 4 is non-smoking from 6:00 a.m. to 6:00 p.m.)  
Smoking is prohibited inside all guest staterooms and on stateroom verandahs. Guests found smoking in their staterooms or on their verandahs will be charged a \$250 stateroom recovery fee.

### Walt Disney Theatre

Theatrical performances may use artificial fog, strobe lights, pyrotechnics and other special effects. For the safety of our performers and the comfort of those around you, the use of any photography or video recording device or any electronic equipment is prohibited.

### Verandah Safety

Please do not leave any combustible materials on your balcony when not present in your stateroom for safety reasons.

Due to port regulations, when the ship is docked, the stores will remain closed.



Morning	8:30	8:45	9:00	9:15	9:30	9:45	10:00	10:15	10:30	10:45	11:00	11:15	11:30	11:45	12:00	12:15	12:30	12:45	1:00	1:15	1:30
FUNNEL VISION	Tinker Bell (G) Funnel Vision						Tinker Bell and the Lost Treasure (G) Funnel Vision						Wii - Cruise Director vs. Captain Funnel Vision								
BUENA VISTA THEATRE	Pirates of the Caribbean: The Curse of the Black Pearl (PG-13) Duration: 2 Hours 23 Minutes												Pirates of the Caribbean: Dead Man's Chest (PG-13) Duration: 2 Hours 31 Minutes								
CHARACTERS	Jake Dk 4, Mid			Stitch Lobby Atrium (P)			Peter Pan Dk 4, Mid			Minnie Lobby Atrium (P)											
FUN FOR ALL AGES	Toddler Time It's a Small World Nursery		Walk A Mile Preludes		Morning Show Promenade Lounge		Photo Seminar Promenade Lounge		Ho Ho Ho; Pirates We Don't Want to Be Featuring Charles Richardson Animator's Palate		Crafts: 3D Crafts Promenade Lounge		Vocal Coaching with Jeanne Lehman Fathoms		Jeanne Lehman Q & A Fathoms						
	Interdenominational Service Keys (Guest Led)				Little Einstein's Adventure Disney's Oceaneer Club				Bingo Pre Sales		\$7,000 MEGA Jackpot Bingo Fathoms		Wii - Cruise Director vs. Captain Deck Stage		Ho Ho Ho; Pirates We Don't Want to Be Animator's Palate						
ADULTS	Friends of Bill W. Animator's Palate		Boot Camp Senses Spa Fitness Center		Abs Attack Senses Spa Fitness Center		Book Exchange Cove Cafe		Disney On the Loose ANYONE CAN COOK Promenade Lounge		Entrée #2 D Lounge		Club 18*21 - Brunch Lumiere's		Singles' Brunch Lumiere's		Art of Tea Seminar D Lounge				
	VIBE 14-17 YEARS OLD						Coffee Break		Craft Corner		GAGA Ball										
EDGE 11-14 YEARS OLD	Youth Activities Open House												Magic Show								
OCEANEER LAB 3-12 YEARS OLD													Goofy Files		Lunch						
OCEANEER CLUB 3-12 YEARS OLD	Youth Activities Open House						Little Einstein's Adventure		Aloha Luau		Lunch		Become Iron Man!								

Afternoon	1:45	2:00	2:15	2:30	2:45	3:00	3:15	3:30	3:45	4:00	4:15	4:30	4:45	5:00	5:15	5:30	5:45	6:00	6:15	6:30	6:45			
FUNNEL VISION	Peter Pan (G) Funnel Vision						Muppet Treasure Island (G) Funnel Vision						Pirates of the Caribbean I (PG-13) Funnel Vision											
BUENA VISTA THEATRE	Pirates of the Caribbean: At World's End (PG-13) Duration: 2 Hours 49 Minutes												Disneynature: Bears (G) Duration: 1 Hour 25 Minutes											
CHARACTERS										Mickey Lobby Atrium (P)			Jake Dk 4, Mid			Hook & Smees Dk 4, Mid			Stitch Dk 4, Mid			Minnie Lobby Atrium (P)		
FUN FOR ALL AGES	Dance Class - Cha Cha Fathoms				Magic Quest Fathoms				Bingo Pre Sales		Mega Raffle Jackpot BINGO Fathoms		Live Guitar with Carrie Stone O'Gills Pub		Live Music with Duo Azucar Promenade Lounge		Showtime: Beatles Celebration Walt Disney Theatre							
	Crafts: Boat Building Promenade Lounge				Disney Vacation Club Group Preview D Lounge				Piston Cup Challenge Disney's Oceaneer Club		Pirate Palooza Promenade Lounge		Bernadette Bihari Live Keys											
ADULTS	Ultimate Disney Trivia O'Gills Pub		Xbox Challenge O'Gills Pub		Adult 3D Crafts O'Gills Pub																			
VIBE 14-17 YEARS OLD	GAGA Ball		Animation Antics		Scavenger Hunt		Dodgeball		Youth Activities Open House															
EDGE 11-14 YEARS OLD	Craft Corner				Youth Activities Open House				Dodgeball															
OCEANEER LAB 3-12 YEARS OLD	Anyone Can Cook				Piston Cup Challenge				Dinner															
OCEANEER CLUB 3-12 YEARS OLD	Memory Wall				Heffalump Hunting				Dinner		Pirate Prep													

Evening	7:00	7:15	7:30	7:45	8:00	8:15	8:30	8:45	9:00	9:15	9:30	9:45	10:00	10:15	10:30	10:45	11:00	11:15	11:30	11:45	12:00			
FUNNEL VISION																								
BUENA VISTA THEATRE	Disneynature: Bears (G) Duration: 1 Hour 25 Minutes												Pirates of the Caribbean: On Stranger Tides (PG-13) Duration: 2 Hours 21 Minutes											
CHARACTERS	Mickey Lobby Atrium (P)		Hook & Smees Dk 4, Mid		Minnie Lobby Atrium (P)		Captain Jack Sparrow Preludes		Peter Pan Dk 4, Mid		Mickey Lobby Atrium (P)													
FUN FOR ALL AGES	A Pirate's Life For Me D Lounge				Pirate Trivia Quest Promenade Lounge				Pirate Dance Party D Lounge				Showtime: Beatles Celebration Walt Disney Theatre		The Challenge of Davy Jones Deck Stage		Pirates IN the Caribbean Party! Deck Stage		DJ Matt Deck Stage		Live Music with Duo Azucar Promenade Lounge			
	Pub Quiz #2 O'Gills Pub				Taste of Jazz with Aileen de la Cruz Keys				Live Piano with Bernadett Bihari Keys				Club 18*21 - Mixer Quiet Cove Pool		Music Video Dance Party Fathoms		Krazy Karaoke Fathoms							
ADULTS	Youth Activities Open House				AquaDunk Fun				Pirate Prep				Deck Party				A Pirate's Life For Me							
VIBE 14-17 YEARS OLD	Dodgeball				AquaDunk Fun				Pirate Prep				Deck Party				A Pirate's Life For Me							
EDGE 11-14 YEARS OLD					Pirate's Life For Me				Pirate's of the Caribbean: Tides of Fortune															
OCEANEER LAB 3-12 YEARS OLD	Pirate Prep				So You Want to be a Pirate?				Youth Activities Open House				Become Iron Man!											
OCEANEER CLUB 3-12 YEARS OLD	Pirate Prep				So You Want to be a Pirate?				Youth Activities Open House				Become Iron Man!											

Symbol for activities that will be repeated during the cruise

FOLD

Fold along the dotted lines and take me with you so you don't miss any of the fun!

FOLD

FOLD

IN THE SPOTLIGHT SERIES

SOLVE IT! SERIES

JUMP UP! SERIES

CREATE & INVENT SERIES

OPEN HOUSE

CLUBHOUSE SERIES

STORYBOOK SERIES



# BUENA VISTA THEATRE

Deck 5, Aft



9:00 a.m. Duration: 2 hrs 23 mins Rating: PG-13	12:00 p.m. Duration: 2 hrs 31 mins Rating: PG-13	3:00 p.m. Duration: 2 hrs 49 mins Rating: PG-13	6:15 p.m. & 8:30 p.m. Duration: 1 hr 25 mins Rating: G	11:00 p.m. Duration: 2 hrs 21 mins Rating: PG-13
---	--	---	--	--

## Character Appearances

### JAKE - THE NEVERLAND PIRATE

Lobby Atrium (P)  
Deck 4, Midship  
9:00 a.m. & 5:00 p.m.

### CAPTAIN HOOK & MR SMEE

Lobby Atrium (P)  
Deck 4, Midship - 9:30 a.m., 5:30 p.m. & 7:30 p.m.

### PIRATE STITCH

Lobby Atrium (P) - 9:30 a.m.  
Deck 4, Midship - 6:00 p.m.

### PIRATE GOOFY

Lobby Atrium (P) - 10:00 a.m.

### PETER PAN

Lobby Atrium (P)  
Deck 4, Midship  
10:00 a.m. & 8:00 p.m.

### PIRATE MINNIE MOUSE

Lobby Atrium (P)  
Deck 4, Midship  
10:30 a.m., 5:00 p.m., 6:00 p.m. & 7:45 p.m.



(P) - Port Side, (S) - Starboard Side

Don't forget your Camera to capture those Magical Moments!  
Check here each day for Character appearances.  
For detailed Character appearance information, please see the Character Information Board in the Lobby Atrium.  
Meet-and-Greets will be advertised for the length of time the line will be open. To avoid disappointment, please meet at start time of appearances.

## YOUTH ACTIVITIES THEMED EXPERIENCES

**CLUBHOUSE SERIES**  
focuses on movement and features content which appeals to younger children.

**STORYBOOK SERIES**  
is designed with a strong connection to the Disney classic stories.

**JUMP UP! SERIES**  
includes large group games & movement-oriented activities.

**CREATE & INVENT SERIES**  
will have a tactile focus allowing children to create and admire their work.

**IN THE SPOTLIGHT SERIES**  
focuses on children's stage presence with lots of activities and enthusiasm.

**SOLVE IT! SERIES**  
are less active, but will challenge children with problem/solutions-based activities.

### YOUTH ACTIVITIES OPEN HOUSE

Activities for families, adults and children of all ages to enjoy together.

## SHIP DIRECTORY

### YOUTH ACTIVITIES

DISNEY'S OCEANEER CLUB	DECK 5, MID	9:30 AM - 10:30 PM
DISNEY'S OCEANEER LAB	DECK 5, MID	9:30 AM - 12:00 MID
EDGE	DECK 2, MID	10:00 AM - 1:00 AM
IT'S A SMALL WORLD NURSERY	DECK 5, AFT	8:30 AM - 11:30 PM
VIBE	DECK 10, MID	10:30 AM - 2:00 AM

### POOLS

\*Children under 12 years of age must have adult supervision in all pools.

AQUADUNK	DECK 10, MID	10:00 AM - 6:00 PM
AQUALAB	DECK 9, AFT	9:00 AM - 9:00 PM
GOOBY'S POOL	DECK 9, MID	10:00 AM - 6:00 PM
NEPHEWS' SPLASH ZONE	DECK 9, AFT	9:00 AM - 6:00 PM
QUIET COVE POOL (18+)	DECK 9, FWD	6:00 AM - 12:00 MID
TWIST 'N' SPOUT	DECK 9, AFT	10:00 AM - 6:00 PM

### RECREATION

PORT ADVENTURES DESK	DECK 3, MID	10:00 AM - 5:00 PM
SENSES FITNESS CENTER (18+)	DECK 9, FWD	6:30 AM - 10:00 PM
WIDE WORLD OF SPORTS DECK	DECK 10, FWD	24 HOURS

### GENERAL INFORMATION

BUENA VISTA THEATRE	DECK 5, AFT	SHOWTIMES
DISNEY VACATION CLUB DESK	DECK 4, MID	9:00 AM - 12:00 PM 5:00 PM - 9:00 PM
ONBOARD SALES DESK	DECK 4, MID	9:30 AM - 12:00 PM 3:00 PM - 6:00 PM 7:00 PM - 10:00 PM
FUNNEL VISION	DECK 9, MID	SHOWTIMES
GUEST SERVICES	DECK 3, MID	24 HOURS
HAIR BRAIDING	DECK 9, MID	9:00 AM - 6:00 PM
MEDICAL HEALTH CENTER	DECK 1, FWD	9:30 AM - 11:00 AM 4:30 PM - 7:00 PM
PORT & SHOPPING DESK	DECK 3, MID	6:30 PM - 8:30 PM
PRELUDES	DECK 4, FWD	5:30 PM - 9:00 PM
QUARTER MASTERS (ARCADE)	DECK 9, MID	24 HOURS
SENSES SPA AND SALON	DECK 9, FWD	8:00 AM - 10:00 PM
SHUTTERS PHOTO GALLERY	DECK 4, AFT	10:00 AM - 10:00 PM
WALT DISNEY THEATRE	DECK 4, FWD	SHOWTIMES

### SHOPPING

MICKEY'S MAINSAIL	DECK 4, FWD	10:00 AM - 10:00 PM
QUACKS	DECK 9, MID	10:30 AM - 4:00 PM
SEA TREASURES	DECK 3, FWD	2:00 PM - 10:00 PM
VISTA GALLERY	DECK 4, MID	11:00 AM - 2:00 PM 4:00 PM - 10:00 PM
WHITE CAPS	DECK 4, FWD	10:00 AM - 10:00 PM

### IMPORTANT NUMBERS

Fire/Security: 7-3001  
Medical EMERGENCY: 7-3000  
Health Center: 7-1923

### DINNER MENU

Animator's Palate: Pirate's Menu  
Carioca's: Pirate's Menu  
Lumiére's: Pirate's Menu  
Dining Times: 6:00 p.m. & 8:30 p.m.

### DRINK OF THE DAY

Sunken Treasure (Alcoholic)  
Parrot Song (Non - Alcoholic)

### WEATHER FORECAST

Today: Sunny High: 72°F/22°C  
Tomorrow: Sunny High: 72°F/22°C

Evening Attire: Pirate or Cruise Casual

## DINING & LOUNGES

### BREAKFAST

CABANAS	DECK 9, AFT	7:30 AM - 11:30 AM
DAISY'S DE LITES	DECK 9, AFT	7:00 AM - 9:00 AM
LUMIÈRE'S BRUNCH	DECK 3, MID	9:00 AM - 12:30 PM
PALO (FOR RESERVATIONS CALL 7-6843)	DECK 10, AFT	10:00 AM - 1:30 PM

### LUNCH

CABANAS	DECK 9, AFT	11:30 AM - 3:00 PM
DAISY'S DE LITES	DECK 9, AFT	11:00 AM - 6:00 PM
LUMIÈRE'S BRUNCH	DECK 3, MID	9:00 AM - 12:30 PM
PALO (FOR RESERVATIONS CALL 7-6843)	DECK 10, AFT	10:00 AM - 1:30 PM
PETE'S BOILER BITES	DECK 9, AFT	11:00 AM - 6:00 PM
PINOCCHIO'S PIZZERIA	DECK 9, MID	11:00 AM - 6:00 PM

### DINNER

ANIMATOR'S PALATE	DECK 4, AFT	6:00 PM & 8:30 PM
CABANAS TABLE SERVICE	DECK 9, AFT	6:30 PM - 8:30 PM
CARIOCA'S	DECK 3, AFT	6:00 PM & 8:30 PM
LUMIÈRE'S	DECK 3, MID	6:00 PM & 8:30 PM
PALO (FOR RESERVATIONS CALL 7-6843)	DECK 10, AFT	6:00 PM - 8:30 PM
PETE'S BOILER BITES	DECK 9, AFT	6:00 PM - 10:00 PM

### LATE NIGHT SNACKS

CABANAS PIRATE BUFFET	DECK 9, AFT	10:45 PM - 11:15 PM
PINOCCHIO'S PIZZERIA	DECK 9, MID	9:30 PM - 12:00 MID

### ADDED FEATURES

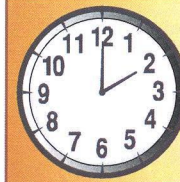
EYE SCREAM	DECK 9, AFT	11:00 AM - 11:00 PM
BEVERAGE STATION	DECK 9, AFT	24 HOURS
ROOM SERVICE	DIAL 7-4330	24 HOURS

### ENTERTAINMENT - LOUNGES - BARS

Adults must be 21 and older to consume alcoholic beverages.

AFTER HOURS	DECK 3, FWD	(AFTER 9:00 PM. ADULTS ONLY)
COVE CAFE (18+)	DECK 9, MID	11:30 AM - 12:00 MID
D LOUNGE	DECK 4, MID	SHOWTIMES
FATHOMS (18+)	DECK 3, FWD	7:00 PM - 2:00 AM
FROZONE TREATS	DECK 9, AFT	11:00 AM - 8:00 PM
INTERNET CAFE	DECK 3, AFT	24 HOURS
KEYS (18+)	DECK 3, FWD	5:30 PM - 12:30 AM
O'GILLS PUB (18+)	DECK 3, FWD	12:00 PM - 12:30 AM
PRELUDES	DECK 4, FWD	5:30 PM - 9:00 PM
PROMENADE LOUNGE	DECK 3, AFT	9:00 AM - 12:00 MID
PINOCCHIO'S PIZZERIA	DECK 9, MID	9:00 AM - 12:00 MID
SIGNALS (18+)	DECK 9, FWD	9:30 AM - 10:30 PM

Public Health Advisory: Consuming raw or undercooked meats, poultry, seafood, shellfish, or eggs may increase your risk for foodborne illness, especially if you have certain medical condition.



## TIME ZONE CHANGE

Remember to turn your clocks  
**FORWARD 1 HOUR** upon retiring on  
SUNDAY evening, or first  
thing MONDAY morning.