

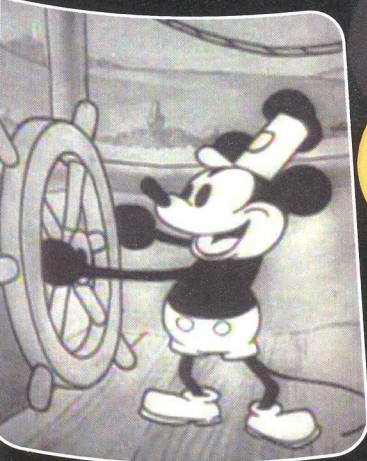
PERSONAL NAVIGATOR

Sunrise: 7:39 a.m. Sunset: 9:26 p.m.
Evening Attire: Semi Formal

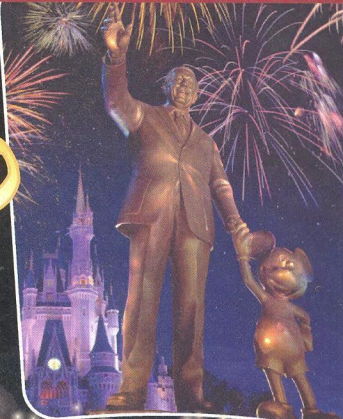
Today: Sunny High: 72°F/22°C
Tomorrow: Partly Cloudy High: 70°F/21°C

MONDAY, MAY 26, 2014

DAY AT SEA




WALT DISNEY The Dream Goes On



WALT DISNEY THEATRE
Deck 4, Forward
6:30 p.m. & 8:45 p.m.



As a courtesy to all Guests, we kindly advise that the saving of seats is **not** permitted in the Walt Disney Theatre.

 Assistance available at the entrance to the Walt Disney Theatre 30 minutes prior to show time.

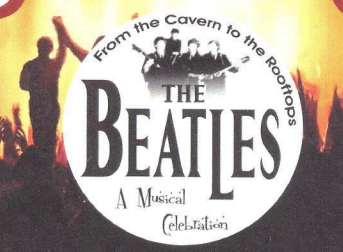
MEMORIAL DAY

Disney MAGIC STEERING COMMITTEE



RICHARD BROWNING
HUMAN RESOURCES MANAGER

Rick began his Disney dream as a member of the Mickey Mouse Club in 1959, and has worked in Hotel Management, Entertainment as a Director at the Sydney Opera House, and in the cruise industry for well over thirty years. Graduating from the University of Tasmania, Rick is a Certified Professional Member of the Australian Human Resources Institute and a Member of the Australian Institute of Company Directors.



BEATLES CELEBRATION

Back by popular demand!
Join Beatles Celebration
LIVE on deck, as they
perform for your enjoyment!

Deck Stage,
Deck 9, Midship,
7:45 p.m.

Don't Miss:

Steering Committee Hide & Seek

Promenade Lounge, Deck 3, Aft - 11:15 a.m.
Join the Disney Magic Steering Committee for this fun game of hide 'n' seek unlike anything you have ever played before.

Q & A with Tessa Sunniva

Fathoms, Deck 3, Forward - 12:15 p.m.
You've seen her perform, now is your chance to ask your questions and get an autograph from this Broadway star.

Goofy & Max's Boat Building Bash

Deck Stage, Deck 9, Midship - 1:00 p.m.
Calling all families who registered for Goofy & Max's Boat Building Bash and created a boat. It's time to take to the water! Who has been the most creative? Who's boat is the best Disney Themed? Who's boat will stay afloat? We'll find out at the epic finale of this fun event.

Disco Legends (18+)

Fathoms, Deck 3, Forward - 11:00 p.m.
Put on your platform shoes and hit the dance floor as we catch a disco fever. Our '70s dance party will have you spinning like a disco ball.



Stop by the Port Adventures Desk, located on Deck 3, Midship, where our friendly team will assist you to plan your adventure to our ports of call!

DINNER MENU
Animator's Palate: Show Dinner
Carioca's: South American Dinner
Lumiére's: French Dinner

DRINK OF THE DAY
Acqua Marina (Alcoholic)
Purple Basil Lemonade (Non Alcoholic)

IMPORTANT NUMBERS

Fire/Security: 7-3001
Medical Emergency: 7-3000
Health Center: 7-1923

ADULT ACTIVITY HIGHLIGHTS

SENSES SPA FITNESS CLASSES & SEMINARS

Stretch & Relax - Senses Spa Fitness Center - 8:00 a.m.
Body Sculpt Boot Camp - Senses Spa Fitness Center - 9:00 a.m.
Group Cycling - Senses Spa Fitness Center - 10:00 a.m.
Hair Seminar - Senses Spa & Salon - 10:30 a.m.
Secrets to a Flatter Stomach - Senses Spa & Salon - 11:00 a.m.
Good Feet Seminar: Walking In Comfort - Senses Spa & Salon - 2:30 p.m.
Acupuncture: Chinese Herbs - Senses Spa & Salon - 3:00 p.m.
Abs Attack - Senses Spa Fitness Center - 4:00 p.m.
Evening Stretch - Senses Spa Fitness Center - 5:00 p.m.

TASTING CLASSES

Wine Tasting - Banfi Wines - Dino Banfi - Keys - 12:30 p.m.
Tequila & Margarita Tasting (21+) - Keys - 2:30 p.m.
Beer Tasting (21+) - Keys - 4:00 p.m.
Please make reservations for tastings at Guest Services for a nominal fee.
Tasting Seminars are only for Guests 21 and Older.

CLUB 18*21 - ICE CREAM SOCIAL

Eye Scream, Deck 9, Aft - 11:30 a.m.

CLUB 18*21 - MUSIC TRIVIA

O'Gills Pub, Deck 3, Forward - 3:00 p.m.

CLUB 18*21 - DODGEBALL

Wide World of Sports Deck, Deck 10, Forward - 10:15 p.m.

ART OF THE THEME SHOW TOUR

Palo, Deck 10, Aft - 9:30 a.m.
Join us on a guided ship tour and discover the key ingredients that make the Disney Magic.

ANYONE CAN COOK - DAZZLING DESSERT #2

D Lounge, Deck 4, Midship - 10:30 a.m.
Learn to create mouth-watering sweets like a professional pastry chef with easy to follow decadent recipes. Followed by our Art of Coffee Seminar at 1:00 p.m.

50 MORE MOVIE QUOTES TRIVIA

O'Gills Pub, Deck 3, Forward - 2:15 p.m.
"Nobody puts baby in a corner". Know the movie? Join your Cruise Staff and test your Movie Quote knowledge.

DISCO LEGENDS

Fathoms, Deck 3, Forward - 11:00 p.m.
Put on your platform shoes and hit the dance floor as we catch a disco fever. Our '70s dance party will have you spinning like a disco ball.



FUN FOR ALL AGES HIGHLIGHTS

MORNING SHOW

Promenade Lounge, Deck 3, Aft - 9:30 a.m.
Tune in to channel 27-5, or join us in Promenade Lounge for your Cruise Director's Morning Show, as they discuss all the top tips and must-see events of the day.

YOUTH ACTIVITIES OPEN HOUSE: MICKEY'S PUZZLE PLAYTIME

Disney's Oceaneer Club, Deck 5, Midship - 9:45 a.m.
Join our crazy panel for this fun event, where it is up to you to determine who is lying and who is telling the truth.

FUN-FILLED FUNCHAL FEATURING CHARLES RICHARDSON

Animator's Palate, Deck 4, Aft - 10:30 a.m. & 12:15 p.m.
Find out just how fascinating the capital of Madeira Island can be.

PORT & SHOPPING TALK

Buena Vista Theatre, Deck 5, Aft - 11:15 a.m.
Join your Port and Shopping Guide to learn about the incredible shopping ashore this cruise!

STEERING COMMITTEE HIDE & SEEK

Promenade Lounge, Deck 3, Aft - 11:15 a.m.
Join the Disney Magic Steering Committee for this fun game of hide 'n' seek unlike anything you have ever played before.

DANCE CLASS - SWING

Fathoms, Deck 3, Forward - 2:15 p.m.
Join dance instructors Beverly and Curtis as they teach you the basics of the Swing.

YOUTH ACTIVITIES OPEN HOUSE: SUPER SLOPPY SCIENCE

Fathoms, Deck 3, Forward - 2:15 p.m.
Join Professor Make-O-Mess in some of the most extreme experiments you will ever see in the world of Super Sloppy Science!



CHIP-IT GOLF (12+)

Lobby Atrium, Deck 3, Midship - 3:00 p.m.
It's par for the course for our Guests 12 and older to compete on our special "greens" in this fun tournament.

DCL GIFT BAG JACKPOT BINGO

Fathoms, Deck 3, Forward - 4:15 p.m.
Four CASH prizes and ten fantastic Disney Cruise Line gift bags containing a baseball cap, journal, water bottles, luggage tags and key chains. The Snowball Jackpot continues to grow and could be won anytime. Pre Sales start 15 minutes prior to game.

BINGO

FAMILY SUPERSTAR KARAOKE

D Lounge, Deck 4, Midship - 9:45 p.m.
Join your Cruise Staff in D Lounge tonight and sing along to your favorite song - fun for everyone.

DISNEY TUNES TRIVIA

Promenade Lounge, Deck 3, Aft - 10:30 p.m.
Determine just how well you know your Disney Tunes with your Cruise Staff.

YOUTH ACTIVITIES HIGHLIGHTS

DINE & PLAY

As a convenience for families dining at 8:30 p.m., our Youth Activities Counselors will be available at 9:30 p.m. at the entrance of Lumiere's and Carioca's and 9:45 p.m. at Animator's Palate to bring registered children to join the fun in Disney's Oceaneer Club and Disney's Oceaneer Lab.



Deck 5, Aft (7-5864) 8:30 a.m. - 11:30 p.m.

Infants and Toddlers can enjoy toys and activities at It's a Small World Nursery. Reservations are first come, first served so please stop by!



Deck 5, Midship (7-1440) 9:30 a.m. - 12:00 mid
(3-12 years old)

TOY STORY BOOT CAMP

2:45 p.m.

Join Corporal Green in our own version of boot camp as we learn how to have fun - The Toy Story way!

PLUTO'S PAJAMA PARTY

7:30 p.m.

Bring the little ones in their pajamas but there will be anything but sleep when Pluto and friends host the ultimate slumber party!



Deck 5, Midship (7-1445) 9:30 a.m. - 12:00 mid
(3-12 years old)

ANIMATION ANTICS

1:45 p.m.

Learn simple animation techniques and then put your new skills to use by drawing some of your favorite Disney Characters.

MARSHMALLOW OLYMPICS

7:30 p.m.

Learn all about this white sugary treat and everything it can do! Build a tower, go flying and test your agility - all with the help of a marshmallow.



Deck 2, Midship (7-5816) 10:00 a.m. - 12:00 mid
(11-14 years old)

BRAINS AND BRAWNS

4:00 p.m.

You will compete against each other to solve clues, take part in physical challenges, and reach the finish first.

THAT'S HILARIOUS

7:30 p.m.

Ever wanted to show off your comedy skills? Then be a part of the cast for the crazy improv show "That's Hilarious" and put on a live show for your friends.



Deck 10, Midship (7-18517) 10:30 a.m. - 12:00 mid
(14-17 years old)

ESPN DREAM TEAM DRAFT DAY

5:15 p.m.

Join us and engage in this interactive fantasy sports draft unlike anything you've ever seen! Can YOU draft the greatest sports team of All-Time?

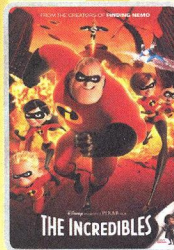
GENDER WARS

10:30 p.m.

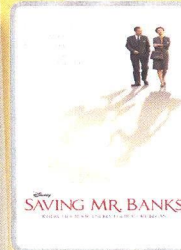
Join us as we find out who really are the king or queen of the castle.

BUENA VISTA THEATRE

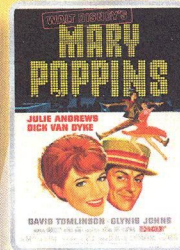
Deck 5, Aft Today's Movies



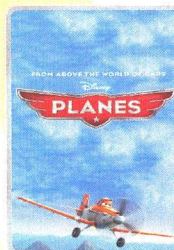
8:30 a.m.
Duration:
1 hr 55 mins
Rating: PG



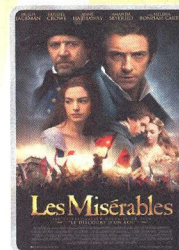
12:45 p.m.
Duration:
2 hrs 5 mins
Rating: PG-13



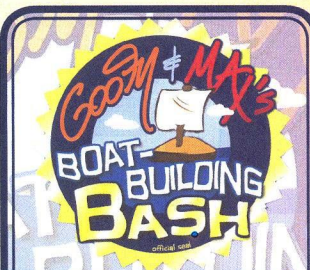
3:15 p.m.
Duration:
2 hrs 19 mins
Rating: G



6:00 p.m. & 8:30 p.m.
Duration:
1 hr 32 mins
Rating: PG



10:30 p.m.
Duration:
2 hrs 38 mins
Rating: PG-13

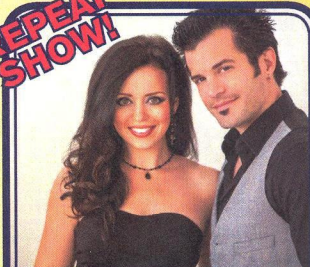


BOAT BUILDING FINALE

Who has been the most creative? Who's boat is the best Disney Themed? Who's boat will stay afloat? We'll find out at the epic finale of this fun event.

**Deck Stage,
Deck 9, Midship,
1:00 p.m.**

REPEAT SHOW!



ADULT VARIETY

Featuring the Magic & Illusion of Kyle Knight & Mistie as they entertain you in this adult exclusive cabaret style show.

**Fathoms,
Deck 3, Forward,
10:30 p.m.**

YOUTH ACTIVITIES OPEN HOUSE

Open House is an opportunity for all to come and participate in a variety of exciting activities and free time in the Oceaneer Club, Oceaneer Lab, Edge, Vibe, and It's a Small World Nursery throughout the cruise. During these times secured programming will still be offered in the other venues for those looking to check their children into care.

Vibe: 12:00 p.m. - 2:00 p.m.
Vibe: 6:00 p.m. - 7:30 p.m.
Edge: 10:00 a.m. - 12:00 p.m.

Disney's Oceaneer Lab: 2:30 p.m. - 4:00 p.m.
Disney's Oceaneer Club: 9:30 a.m. - 12:00 p.m.
Disney's Oceaneer Club: 10:00 p.m. - 12:00 mid

MORE TO ENJOY WHILE ONBOARD



PLAN YOUR NEXT GETAWAY NOW

Our 3 and 4 night Bahamian Cruises are a perfect way to get an instant tropical recharge! Departing from Miami or Port Canaveral, most Bahamian cruises include a stop at Disney's private island, Castaway Cay. Visit the Onboard Sales Desk today and ask about our special onboard booking offer.



DISNEY VACATION CLUB

Visit the Disney Vacation Club information desk and ask us about show times where you will learn how to turn every vacation into the vacation of a lifetime.

PORT & SHOPPING INFORMATION

Join Gemma your Port Shopping Guide, at 11:15 a.m. in the Buena Vista Theatre, Deck 5, Aft to learn about the Ports of Funchal and Malaga. Essential information covering everything from the history of the ports to the incredible shopping opportunities that await you. Stop by the Port & Shopping Desk, Deck 3, Midship between 6:30 p.m. and 8:30 p.m. to meet Gemma and pick up your Port Shopping Maps.

Connect@Sea

We are now offering a NEW and improved Internet service to stay connected on your cruise like no other in the industry! Internet packages range from \$0.25 per MB - \$89.00 (1000 MB package). For more information contact your Connect@Sea Expert or Guest Services onboard.

CURRENCY EXCHANGE

Euros will be available for exchange at Guests Services, Deck 3, Midship, 24 hrs a day. Not all currencies will be exchanged onboard, so please check with Guests Services for further information.

EARLY FLIGHT INFORMATION

Should you have a flight out of the Barcelona airport prior to 10:30 a.m. on debarkation morning kindly bring your airline tickets to Guest Services on Deck 3, Midship for additional information and assistance.



Deck 9, Forward
Phone : 7-1465

ONLY FOR HIM

Receive Elemis Grooming Shave – Double Close Shave with Pro Collagen Facial, relax with a Neck and Shoulder Massage. Indulge yourself with 75 minutes only for \$95.

PAMPER PACKAGE

Receive 75 minute hands on treatment including a 50 minute Full Body Massage with 25 Minute Facial, and relax. Only \$149.



Our port of Madeira is filled with multiple sightseeing tours of the island's most scenic sites. From hiking to bicycling or canyoning on the mountains, our Port Adventures team located on Deck 3, Midship can assist you in planning your day to explore the best Madeira has to offer.

SHOPPING

SOPHIA FIORI

Industry leaders in vivid colored diamonds, and more specifically Caribbean blue diamonds – one of the single most popular purchases at sea because it reminds everyone of the colors of the breathtaking ocean!

WHITE CAPS

Deck 4, Forward

Sophia Fiori



ART GALLERY

Stop by the Art Gallery today to view our selection of Thomas Kinkade Limited Edition Disney paintings. While there, see if you can find some hidden characters in the artwork. Deck 4, Midship.

CAPTAIN'S SIGNING

Don't miss your chance to meet the Master of the Disney Magic! Stop by White Caps today at 12:15 p.m. where you can have your cruise mementos signed by our Captain. Deck 4, Forward.

SOPHIA FIORI DIAMOND TRUNK SHOW

Sophia Fiori, Hollywood's first choice in diamonds, has boarded the Disney Magic to premier their new collection of white & colored diamonds worn at the Oscars, Golden Globes, Emmy and Grammy Awards. Stop by White Caps, Deck 4 and view this stunning collection.

DISNEY CRUISE LINE TRANSATLANTIC CROSSING TEE AVAILABLE

Commemorate your Transatlantic Crossing on the Disney Magic® Cruise Ship with a specially designed t-shirt available at White Caps. Deck 4, Forward.

BEAUTIFULLY DISNEY

Captivate your mind with Beautifully Disney, a new collection of cosmetics and beauty product. Beautifully Disney defines timeless beauty through collections of fairytale nostalgia, unlocking harmonious colors. Through the collections of this new and enchanting line, it is the goal to keep you romanced by the contrast of mysterious yet inviting colors. Available at White Caps, Deck 4, Midship.

Shutters

PHOTOBOOK

Create a personalized story book of your Disney Cruise. Please create your PhotoBook on a daily basis in Shutters Deck 4, Aft. All orders need to be placed by 9:00 p.m. on the last night of the cruise.

D189067 05-26-2014 ©DISNEY

IMPORTANT INFORMATION

Security Notice

All Guests (including Children) who wish to disembark or embark the ship are required to present their Key to the World card at the gangway. A photo ID is also required for those Guests who are 18 years of age or older. Guests under the age of 18 are required to have a parent, guardian or other responsible adult sign an authorization form at the Guest Service Desk if they wish to go ashore unaccompanied or with any adult from another stateroom.

Sunscreen/Insect Repellent Advisory
Use sunscreen first and protect against mosquito borne illnesses by applying insect repellent on top of sunscreen when going ashore.

Cold and Flu Reminders

Please wash hands frequently and thoroughly, particularly before meals. Contact the Health Center by dialing 7-1923, should anyone in your party become ill.

Inclement Weather

For the safety of all Guests, outdoor events may be changed due to unforeseen weather conditions.

Corridor Quiet Hours

As a courtesy to all our Guests, please recognize quiet hallway hours from 10:00 p.m. til 8:00 a.m.

Environmental Message

With Disney's commitment to the Environment please refrain from throwing anything over the Ship's side. Thank you.

No Reserved Seats Policy

As a courtesy to all Guests we kindly advise that the saving of seats is not permitted in the Walt Disney Theatre, and the saving of the sun loungers is not permitted on Deck 9 and 10. Items left unattended will be returned to lost and found at Guest Services, Deck 3, Midship.

Smoking

For the comfort of our guests, the following areas are designated as smoking areas:

- Deck 10 Forward, Starboard Side
- Deck 9, Forward, Starboard Side at Quiet Cove
- Deck 4, Starboard Side from 6:00 p.m. to 6:00 a.m. only (all of Deck 4 is non-smoking from 6:00 a.m. to 6:00 p.m.)

Smoking is prohibited inside all guest staterooms and on stateroom verandahs. Guests found smoking in their staterooms or on their verandahs will be charged a \$250 stateroom recovery fee.

Walt Disney Theatre

Theatrical performances may use artificial fog, strobe lights, pyrotechnics and other special effects. For the safety of our performers and the comfort of those around you, the use of any photography or video recording device or any electronic equipment is prohibited.

Verandah Safety

Please do not leave any combustible materials on your balcony when not present in your stateroom for safety reasons.

Morning	8:30	8:45	9:00	9:15	9:30	9:45	10:00	10:15	10:30	10:45	11:00	11:15	11:30	11:45	12:00	12:15	12:30	12:45	1:00	1:15	1:30
FUNNEL VISION	A Goofy Movie (G) Funnel Vision						The Little Mermaid (G) Funnel Vision						Virtual Tours Funnel Vision			Goofy & Max's Boat Building Bash Funnel Vision					
BUENA VISTA THEATRE	The Incredibles (PG) Duration: 1 Hour 55 Minutes									Port & Shopping Talk Buena Vista Theatre			Saving Mr. Banks (PG-13) Duration: 2 Hours 5 Minutes								
CHARACTERS	Stitch Gazebo, Dk 9						Princess Gathering Lobby Atrium						Mickey Gazebo, Dk 9								
FUN FOR ALL AGES	Toddler Time It's a Small World Nursery		Walk A Mile Preludes		Morning Show Promenade Lounge		Fun-Filled Funchal Featuring Charles Richardson Animator's Palate			Steering Committee Hide & Seek Promenade Lounge			Fun-Filled Funchal Animator's Palate		Goofy & Max's Boat Building Bash Deck Stage						
	Mickey's Puzzle Playtime Disney's Oceaneer Club			Animation - Donald Duck Fathoms			Port & Shopping Talk Buena Vista Theatre			Captain's Signing White Caps		Crafts: 3D Crafts Promenade Lounge									
ADULTS	Friends of Bill W. Keys		Boot Camp Senses Spa Fitness Center		Art of The Theme Show Tour Palo			Dazzling Dessert #2 D Lounge		Singles Coffee Mingle Cove Cafe		Animation - Donald Duck O'Gills Pub		Art of Coffee Seminar D Lounge							
	Book Exchange Cove Cafe			Club 18*21 - Ice Cream Social Eye Scream			Banfi Wine Tasting (21+) Keys														
VIBE 14-17 YEARS OLD	Coffee Break						Animation Cells			Youth Activities Open House											
EDGE 11-14 YEARS OLD	Youth Activities Open House						Trivia Challenge			Picture This											
OCEANEER LAB 3-12 YEARS OLD	4th Pigs Pasta Palace						Lunch														
OCEANEER CLUB 3-12 YEARS OLD	Youth Activities Open House						Mickey's Puzzle Playtime			Once Upon a Time			Become Iron Man!			Lunch					

Afternoon	1:45	2:00	2:15	2:30	2:45	3:00	3:15	3:30	3:45	4:00	4:15	4:30	4:45	5:00	5:15	5:30	5:45	6:00	6:15	6:30	6:45						
FUNNEL VISION	Monsters, Inc. (G) Funnel Vision						Finding Nemo (G) Funnel Vision						Planes (PG) Duration: 1 Hour 32 Minutes														
BUENA VISTA THEATRE	Mary Poppins (G) Duration: 2 Hours 19 Minutes									Chip & Dale Gazebo, Dk 9									Goofy Gazebo, Dk 9			Mickey, Donald & Goofy Lobby Atrium (P)			Minnie & Daisy Lobby Atrium (P)		
CHARACTERS	Pluto Gazebo, Dk 9						Dance Class - Swing Fathoms						Chip-It Golf (12+) Lobby Atrium			Bingo Pre Sales			DCL Gift Bag Jackpot BINGO Fathoms			Ballroom Dancing Fathoms					
FUN FOR ALL AGES	Crafts: Origami Animals Promenade Lounge			Super Sloppy Science Disney's Oceaneer Club			Disney Vacation Club Group Preview D Lounge			Toddler Time Promenade Lounge			Live Music with Midtown Promenade Lounge														
	50 More Movie Quotes Trivia O'Gills Pub			Club 18*21 Music Trivia O'Gills Pub			Crafts: Origami Animals O'Gills Pub																				
VIBE 14-17 YEARS OLD	Open House		Scavenger Hunt		Picture This			ESPN Dream Team Draft Day			Youth Activities Open House																
EDGE 11-14 YEARS OLD	Picture This		Xbox Challenge			Brains and Brawns			GAGA Ball																		
OCEANEER LAB 3-12 YEARS OLD	Animation Antics		Youth Activities Open House			Super Sloppy Science			Dinner																		
OCEANEER CLUB 3-12 YEARS OLD	Toy Story Boot Camp			Heffalump Hunting			Nemo's Coral Reef Adventure			Dinner																	

Evening	7:00	7:15	7:30	7:45	8:00	8:15	8:30	8:45	9:00	9:15	9:30	9:45	10:00	10:15	10:30	10:45	11:00	11:15	11:30	11:45	12:00						
FUNNEL VISION	Beatles Celebration on Deck Funnel Vision						The Avengers (PG-13) Funnel Vision						Les Miserables Duration: 2 Hours 38 Minutes														
BUENA VISTA THEATRE	Minnie & Daisy Lobby Atrium (P)									Mickey, Donald & Goofy Lobby Atrium (P)			Family Superstar Karaoke D Lounge									Disney Tunes Trivia Promenade Lounge			Become Iron Man! Disney's Oceaneer Club		
FUN FOR ALL AGES	Beatles Celebration on Deck Deck Stage			Walt Disney Theatre			Midtown Live Promenade Lounge			The Royal Ball Disney's Oceaneer Club			Live Music with Midtown Promenade Lounge														
	Live Guitar with Carrie Stone O'Gills Pub			Live Piano with Aileen de la Cruz Keys			Carrie Stone Live O'Gills Pub			Club 18*21 Sports Deck			Adult Variety: Kyle Knight & Mistie Fathoms			DJ Matt Fathoms											
VIBE 14-17 YEARS OLD	Open House		Smoothie Hour			Pump It Up			Gender Wars																		
EDGE 11-14 YEARS OLD	That's Hilarious						Boys and Girls Chill																				
OCEANEER LAB 3-12 YEARS OLD	Marshmallow Olympics						Piston Cup Challenge																				
OCEANEER CLUB 3-12 YEARS OLD	Pluto's Pajama Party			Memory Wall			Youth Activities Open House			The Royal Ball			Become Iron Man!														

Symbol for activities that will be repeated during the cruise
 FOLD
 Fold along the dotted lines and take me with you so you don't miss any of the fun!
 FOLD
 IN THE SPOTLIGHT SERIES
 SOLVE IT! SERIES
 JUMP UP! SERIES
 CREATE & INVENT SERIES
 OPEN HOUSE
 CLUBHOUSE SERIES
 STORYBOOK SERIES

MONDAY, MAY 26, 2014 - DAY AT SEA

BUENA VISTA THEATRE

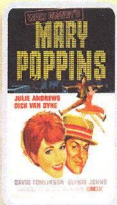
Deck 5, Aft



8:30 a.m.
Duration: 1 hr 55 mins
Rating: PG



12:45 p.m.
Duration: 2 hrs 5 mins
Rating: PG-13



3:15 p.m.
Duration: 2 hrs 19 mins
Rating: G



6:00 p.m. & 8:30 p.m.
Duration: 1 hr 32 mins
Rating: PG



10:30 p.m.
Duration: 2 hrs 38 mins
Rating: PG-13

Character Appearances

MICKEY'S PUZZLE PLAYTIME

Disney's Oceaneer Club
9:45 a.m.

STITCH

Gazebo, Deck 9 - 10:30 a.m.

PRINCESS GATHERING

Lobby Atrium - 11:00 a.m.

DONALD DUCK

Gazebo, Deck 9 - 11:00 a.m.

MINNIE MOUSE

Gazebo, Deck 9 - 11:30 a.m.

MICKEY MOUSE

Gazebo, Deck 9 - 12:00 p.m.

CHIP & DALE

Gazebo, Deck 9 - 3:00 p.m.

PLUTO

Gazebo, Deck 9 - 3:30 p.m.

GOOFY

Gazebo, Deck 9 - 4:00 p.m.

MICKEY, DONALD & GOOFY

Lobby Atrium (P)
5:30 p.m. & 8:15 p.m.

MINNIE & DAISY

Lobby Atrium (P)
6:00 p.m. & 7:45 p.m.



(P) - Portside, (S) - Starboard Side

Don't forget your Camera to capture those Magical Moments!

Check here each day for Character appearances.

For detailed Character appearance information

see the Character Information Board in the Lobby Atrium.

Meet-and-Greets will be advertised for the length of time the line will be open. To avoid disappointment, please meet at start time of appearances.

YOUTH ACTIVITIES THEMED EXPERIENCES

CLUBHOUSE SERIES

focuses on movement and features content which appeals to younger children.

STORYBOOK SERIES

is designed with a strong connection to the Disney classic stories.

JUMP UP! SERIES

includes large group games & movement-oriented activities.

CREATE & INVENT SERIES

will have a tactile focus allowing children to create and admire their work.

IN THE SPOTLIGHT SERIES

focuses on children's stage presence with lots of activities and enthusiasm.

SOLVE IT! SERIES

are less active, but will challenge children with problem/solutions-based activities.

YOUTH ACTIVITIES OPEN HOUSE

Activities for families, adults and children of all ages to enjoy together.

SHIP DIRECTORY

YOUTH ACTIVITIES

DISNEY'S OCEANEER CLUB	DECK 5, MID	9:30 AM - 12:00 MID
DISNEY'S OCEANEER LAB	DECK 5, MID	9:30 AM - 12:00 MID
EDGE	DECK 2, MID	10:00 AM - 12:00 MID
IT'S A SMALL WORLD NURSERY	DECK 5, AFT	8:30 AM - 11:30 PM
VIBE	DECK 10, MID	10:30 AM - 12:00 MID

POOLS

*Children under 12 years of age must have adult supervision in all pools.

AQUADUNK	DECK 10, MID	10:00 AM - 6:00 PM
AQUALAB	DECK 9, AFT	9:00 AM - 9:00 PM
GOOFY'S POOL	DECK 9, MID	10:00 AM - 6:30 PM
NEPHEWS' SPLASH ZONE	DECK 9, AFT	9:00 AM - 6:00 PM
QUIET COVE POOL (18+)	DECK 9, FWD	6:00 AM - 10:00 PM
TWIST 'N' SPOUT	DECK 9, AFT	10:00 AM - 6:00 PM

RECREATION

PORT ADVENTURES DESK	DECK 3, MID	10:00 AM - 5:00 PM
		7:00 PM - 8:30 PM
SENSES FITNESS CENTER (18+)	DECK 9, FWD	6:30 AM - 10:00 PM
WIDE WORLD OF SPORTS DECK	DECK 10, FWD	24 HOURS

GENERAL INFORMATION

BUENA VISTA THEATRE	DECK 5, AFT	SHOWTIMES
DISNEY VACATION CLUB DESK	DECK 4, MID	9:00 AM - 12:00 PM
		5:00 PM - 9:00 PM
ONBOARD SALES DESK	DECK 4, MID	9:30 AM - 12:00 PM
		3:00 PM - 6:00 PM
		7:00 PM - 10:00 PM
FUNNEL VISION	DECK 9, MID	SHOWTIMES
GUEST SERVICES	DECK 3, MID	24 HOURS
HAIR BRAIDING	DECK 9, MID	9:00 AM - 4:00 PM
MEDICAL HEALTH CENTER	DECK 1, FWD	9:30 AM - 11:00 AM
		4:30 PM - 7:00 PM
PORT & SHOPPING DESK	DECK 3, MID	6:30 PM - 8:30 PM
PRELUDES	DECK 4, FWD	5:30 PM - 9:00 PM
QUARTER MASTERS (ARCADE)	DECK 9, MID	24 HOURS
SENSES SPA AND SALON	DECK 9, FWD	8:00 AM - 10:00 PM
SHUTTERS PHOTO GALLERY	DECK 4, AFT	10:00 AM - 10:00 PM
WALT DISNEY THEATRE	DECK 4, FWD	SHOWTIMES

SHOPPING

MICKEY'S MAINSAIL	DECK 4, FWD	10:00 AM - 10:00 PM
QUACKS	DECK 9, MID	10:30 AM - 4:00 PM
SEA TREASURES	DECK 3, FWD	2:00 PM - 10:00 PM
VISTA GALLERY	DECK 4, MID	11:00 AM - 2:00 PM
		4:00 PM - 10:00 PM
WHITE CAPS	DECK 4, FWD	10:00 AM - 10:00 PM

IMPORTANT NUMBERS

Fire/Security:	7-3001
Medical EMERGENCY:	7-3000
Health Center:	7-1923

DINNER MENU

Animator's Palate: Show Dinner
Carioca's: South American Dinner
Lumière's: French Dinner
Dining Times: 6:00 p.m. & 8:30 p.m.

DRINK OF THE DAY

Acqua Marina (Alcoholic)
Purple Basil Lemonade (Non - Alcoholic)

WEATHER FORECAST

Today: Sunny High: 72°F/22°C
Tomorrow: Partly Cloudy High: 70°F/21°C

Evening Attire: Semi Formal

DINING & LOUNGES

BREAKFAST

CABANAS	DECK 9, AFT	7:30 AM - 11:30 AM
DAISY'S DE LITES	DECK 9, AFT	7:00 AM - 9:00 AM
LUMIÈRE'S	DECK 3, MID	9:00 AM - 12:30 PM
PALO (FOR RESERVATIONS CALL 7-6843)	DECK 10, AFT	10:00 AM - 1:30 PM

LUNCH

CABANAS	DECK 9, AFT	11:30 AM - 3:00 PM
DAISY'S DE LITES	DECK 9, AFT	11:00 AM - 6:00 PM
LUMIÈRE'S	DECK 3, MID	9:00 AM - 12:30 PM
PALO (FOR RESERVATIONS CALL 7-6843)	DECK 10, AFT	10:00 AM - 1:30 PM
PETE'S BOILER BITES	DECK 9, AFT	11:00 AM - 6:00 PM
PINOCCHIO'S PIZZERIA	DECK 9, MID	11:00 AM - 6:00 PM

DINNER

ANIMATOR'S PALATE	DECK 4, AFT	6:00 PM & 8:30 PM
CABANAS TABLE SERVICE	DECK 9, AFT	6:30 PM - 8:30 PM
CARIOCA'S	DECK 3, AFT	6:00 PM & 8:30 PM
LUMIÈRE'S	DECK 3, MID	6:00 PM & 8:30 PM
PALO (FOR RESERVATIONS CALL 7-6843)	DECK 10, AFT	6:00 PM - 8:30 PM
PETE'S BOILER BITES	DECK 9, AFT	6:00 PM - 10:00 PM

LATE NIGHT SNACKS

O'GILLS PUB	DECK 3, FWD	10:45 PM - 11:45 PM
PINOCCHIO'S PIZZERIA	DECK 9, MID	9:30 PM - 12:00 MID
PROMENADE LOUNGE	DECK 3, AFT	10:45 PM - 11:45 PM

ADDED FEATURES

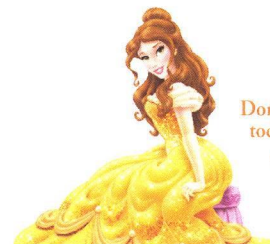
EYE SCREAM	DECK 9, AFT	11:00 AM - 11:00 PM
BEVERAGE STATION	DECK 9, AFT	24 HOURS
ROOM SERVICE	DIAL 7-4330	24 HOURS

ENTERTAINMENT - LOUNGES - BARS

Adults must be 21 and older to consume alcoholic beverages.

AFTER HOURS	DECK 3, FWD	(AFTER 9:00 P.M. ADULTS ONLY)
COVE CAFE (18+)	DECK 9, MID	7:30 AM - 12:00 MID
D LOUNGE	DECK 4, MID	SHOWTIMES
FATHOMS (18+)	DECK 3, FWD	7:00 PM - 2:00 AM
FROZONE TREATS	DECK 9, AFT	11:00 AM - 8:00 PM
INTERNET CAFE	DECK 3, AFT	24 HOURS
KEYS (18+)	DECK 3, FWD	5:30 PM - 12:30 AM
O'GILLS PUB (18+)	DECK 3, FWD	12:00 PM - 12:30 AM
PRELUDES	DECK 4, FWD	5:30 PM - 9:00 PM
PROMENADE LOUNGE	DECK 3, AFT	9:00 AM - 12:00 MID
PINOCCHIO'S PIZZERIA	DECK 9, MID	9:00 AM - 12:00 MID
SIGNALS (18+)	DECK 9, FWD	9:30 AM - 10:30 PM

Public Health Advisory: Consuming raw or undercooked meats, poultry, seafood, shellfish, or eggs may increase your risk for foodborne illness, especially if you have certain medical condition.



PRINCESS GATHERING

Don't miss your chance to see this Royal gathering today in the Lobby Atrium and don't forget your camera to capture those magical moments.

11:00 a.m.