

# PERSONAL NAVIGATOR

TUESDAY, MAY 27, 2014

Sunrise: 7:03 a.m. Sunset: 9:07 p.m.  
 Evening Attire: Cruise Casual  
 All Ashore: Approx. 9:30 a.m.  
 All Aboard: 5:45 p.m.

Today: Partly Sunny High: 65°F/18°C  
 Tomorrow: Partly Cloudy High: 67°F/19°C

FUNCHAL (MADEIRA), PORTUGAL


## SHOWTIME FEATURING COMEDY & MUSIC OF LOST LOCOS OLÉ!



**WALT DISNEY THEATRE**  
 Deck 4, Forward  
 6:30 p.m. & 8:45 p.m.

As a courtesy to all Guests, we kindly advise that the saving of seats is **not** permitted in the Walt Disney Theatre.



 Assistance available at the entrance to the Walt Disney Theatre 30 minutes prior to show time.

## Welcome To Funchal,

Madeira, Portugal is a refreshing and invigorating port of call, located on a string of islands in the North Atlantic between Portugal and Africa. This resort destination is celebrated for its sweet Madeira wine, burgeoning biodiversity, handicrafts and festive celebrations. Its fortunate location in the North Atlantic off the coast of Africa provides temperatures that hover in the mid 70s Fahrenheit most of the year, with refreshing trade winds and full-time sunshine.

Most visitors are not aware that this charming island nation's history began as a matter of circumstance. In 1419, Portuguese Prince Henry the Navigator and his fleet set out on a fateful voyage along the mysterious west coast of Africa. It was widely regarded as an intrepid and perhaps foolhardy journey, as common belief was that the world was flat. The sailors never encountered the edge of the world, blown off course and separated from the fleet—chanced upon an island they named Porto Santo or "Holy Harbor." The discovery of the nearby island of Madeira was soon to follow.

Visitors are treated to old-fashioned delights and restful recreation in Madeira for the entire family. Enjoy the spread of reserves and gardens all over the city, or go beachcombing on the pebbled shoreline of Funchal, the Madeira Region's capital. In town, stroll by a monument dedicated to Captain Zarco in front of the Bank of Portugal building, and while you're there, shop for souvenirs in the bustling downtown district.



**TIME ZONE CHANGE**  
 Remember to turn your clocks **FORWARD 1 HOUR** upon retiring on **TUESDAY** evening, or first thing **WEDNESDAY** morning.



Please check your tickets for meeting times and locations. Visit the Port Adventure's Desk, Deck 3, Midship for any questions.

### DINNER MENU

Animator's Palate: Show Dinner  
 Carioca's: South American Dinner  
 Lumière's: French Dinner

### DRINK OF THE DAY

Bay Breeze (Alcoholic)  
 Brer Bear's Berries n' Cherries (Non Alcoholic)

### IMPORTANT NUMBERS

Fire/Security: 7-3001  
 Medical Emergency: 7-3000  
 Health Center: 7-1923



# ADULT ACTIVITY HIGHLIGHTS



## SENSES SPA FITNESS CLASSES & SEMINARS

- Abs Attack* - Senses Spa Fitness Center - 8:30 a.m.
- Stretch & Relax* - Senses Spa Fitness Center - 9:00 a.m.
- Group Cycling* - Senses Spa Fitness Center - 10:00 a.m.
- Drab to Fab Seminar* - Senses Spa & Salon - 11:45 a.m.
- Detox for Health & Weight Loss* - Senses Spa & Salon - 2:30 p.m.
- Complimentary Footprint Analysis* - Senses Spa Fitness Center - 4:00 p.m.
- Yoga* - Senses Spa Fitness Center - 5:00 p.m.

## PUB QUIZ #3

*O'Gills Pub, Deck 3, Forward - 7:45 p.m.*

Join us for the third installment of our Pub Quiz challenge.

## DJ MATT

*Fathoms, Deck 3, Forward - 9:45 p.m. & 11:00 p.m.*

Join DJ Matt as he spins the tunes LIVE!

## VARIETY SHOW: MAX WINFREY

*Fathoms, Deck 3, Forward - 10:30 p.m.*

Featuring the Physical Comedy of Max Winfrey, in this exclusive adult cabaret style show.

# FUN FOR ALL AGES HIGHLIGHTS

## YOUTH ACTIVITIES OPEN HOUSE: MICKEY'S PUZZLE PLAYTIME

*Disney's Oceaneer Club, Deck 3, Aft - 9:45 a.m.*

Come and Play with Mickey & friends as they share their favorite games, puzzles and dances!

## YOUTH ACTIVITIES OPEN HOUSE: BECOME IRON MAN!

*Disney's Oceaneer Club, Deck 3, Aft - 10:15 a.m.*

Do you want to be Iron Man? Marvel's Avengers Academy invites you to virtually suit up in Iron Man's armor for an exciting interactive training gauntlet.

## YOUTH ACTIVITIES OPEN HOUSE: STITCH'S GREAT ADVENTURE

*Disney's Oceaneer Club, Deck 3, Aft - 11:30 a.m.*

Stitch needs your help in trying to capture ten of his lost experiments before they cause all kinds of problems on the ship!

## PICTIONARY CHALLENGE

*Promenade Lounge, Deck 3, Aft - 2:30 p.m.*

Come have some fun with this classic game.



## SALUDOS AMIGOS FIESTA

*D Lounge, Deck 4, Midship - 7:45 p.m.*

Come see what Donald and his friends are up to this time. Bring the family out to this interactive dance party featuring fun Latin music! Your family will learn to Salsa, Merengue and just have a Latin good time!

## PIXAR TRIVIA

*Promenade Lounge, Deck 3, Aft - 7:45 p.m.*

Just how well do you know your favorite animated features? Find out in this fun trivia.



## MICKEY MANIA

*D Lounge, Deck 4, Midship - 10:00 p.m.*

Join us for the ultimate test of your Disney knowledge as we play our live, interactive game show, that's "insania!"

## FAMILY SUPERSTAR KARAOKE

*D Lounge, Deck 4, Midship - 10:30 p.m.*

Join your Cruise Staff in D Lounge tonight and sing along to your favorite song - fun for everyone.

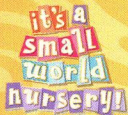




# YOUTH ACTIVITIES HIGHLIGHTS

## DINE & PLAY

As a convenience for families dining at 8:30 p.m., our Youth Activities Counselors will be available at 9:30 p.m. at the entrance of Lumiere's and Carioca's and 9:45 p.m. at Animator's Palate to bring registered children to join the fun in Disney's Oceaneer Club and Disney's Oceaneer Lab.



**Deck 5, Aft (7-5864) 9:00 a.m. - 11:30 p.m.**

Infants and Toddlers can enjoy toys and activities at It's a Small World Nursery. Reservations are first come, first served so please stop by!



**Deck 5, Midship (7-1440) 9:30 a.m. - 10:00 p.m.**  
(3-12 years old)

### FLYING OFF TO NEVERLAND

1:15 p.m.

With our creative imaginations, we will fly to Neverland just like in one of our favorite Disney stories!

### ALADDIN'S FUN ADVENTURES

7:00 p.m.

Come join us as we go on a fun-filled Arabian adventure, discover a flying carpet and find the hidden Genie.



**Deck 5, Midship (7-1445) 9:30 a.m. - 12:00 mid**  
(3-12 years old)

### SUPER SLOPPY SCIENCE

11:00 a.m.

Join Professor Make-O-Mess in some of the most extreme experiments you will ever see in the world of Super Sloppy Science!

### ANYONE CAN COOK

7:15 p.m.

Anyone can cook as we work together to create some of our favorite treats.



**Deck 2, Midship (7-5816) 10:00 a.m. - 1:00 a.m.**  
(11-14 years old)

### XBOX CHALLENGE

3:30 p.m.

Join your youth activities counselors and fellow cruisers for some Xbox fun!

### ANIMATION ANTICS

5:00 p.m.

Learn simple animation techniques and then put your new skills to use by drawing some of your favorite Disney Characters.



**Deck 10, Midship (7-18517) 11:00 a.m. - 2:00 a.m.**  
(14-17 years old)

### KARAOKE CHALLENGE

10:00 p.m.

Join your counselors tonight and sing along to your favorite song!

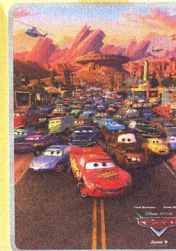
### INVADE EDGE

11:00 p.m.

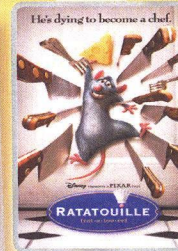
Join your fellow cruisers as we invade Edge.

# BUENA VISTA THEATRE

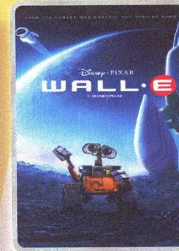
## Deck 5, Aft Today's Movies



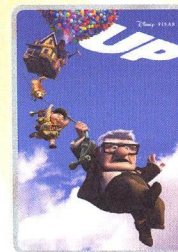
8:30 a.m.  
Duration:  
1 hr 56 mins  
Rating: G



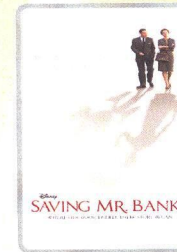
1:15 p.m.  
Duration:  
1 hr 51 mins  
Rating: G



3:30 p.m.  
Duration:  
1 hr 38 mins  
Rating: G



6:00 p.m. & 8:15 p.m.  
Duration:  
1 hr 36 mins  
Rating: PG



10:30 p.m.  
Duration:  
2 hrs 5 mins  
Rating: PG-13



### DANCE PARTY

Come see what Donald and his friends are up to this time. Bring the family out to this interactive dance party featuring fun Latin music! Your family will learn to Salsa, Merengue and just have a Latin good time!

**D Lounge,  
Deck 4, Midship,  
7:45 p.m.**



### ADULT VARIETY

Featuring the Physical Comedy of Max Winfrey, as he entertains you in this adult exclusive show.

**Fathoms (18+),  
Deck 3, Forward,  
10:30 p.m.**

## YOUTH ACTIVITIES OPEN HOUSE

Open House is an opportunity for all to come and participate in a variety of exciting activities and free time in Disney's Oceaneer Club, Disney's Oceaneer Lab, Edge, Vibe, and It's a Small World Nursery throughout the cruise. During these times secured programming will still be offered in the other venues for those looking to check their children into care.

Edge: 10:00 a.m. - 12:00 p.m.  
Vibe: 12:00 p.m. - 2:00 p.m.

Disney's Oceaneer Club: 9:30 a.m. - 12:30 p.m.  
Disney's Oceaneer Lab: 1:00 p.m. - 4:00 p.m.



# MORE TO ENJOY WHILE ONBOARD



## BOOK ONBOARD AND SAVE!

Explore all the itineraries Disney Cruise Line offers - from the Caribbean and Bahamas to Alaska or Europe. Save when you book your next family adventure onboard! Visit the Onboard Sales Desk for more information.



## DISNEY VACATION CLUB® MEMBERS CELEBRATION

Members! Mix and mingle with other Members and learn how you can enhance your Membership! Please see a Disney Vacation Club representative on Deck 4, Midship, or call 7-2805 from your stateroom phone for more information.

## CURRENCY EXCHANGE

Euros will be available for exchange at Guests Services, Deck 3, Midship, 24 hrs a day. Not all currencies will be exchanged onboard, so please check with Guests Services for further information.

## Connect@Sea

We are now offering a NEW and improved Internet service to stay connected on your cruise like no other in the industry! Internet packages range from \$0.25 per MB - \$89.00 (1000 MB package). For more information contact your Connect@Sea Expert or Guest Services onboard.

## QUARTER MASTERS ARCADE

Ever dreamed of flying high in the Sky? On After Burner feel the adrenaline while you are a Pilot traveling on a turbulence adventure, in the exclusive Quarter Masters Arcade, located on Deck 9, Midship.

## EARLY FLIGHT INFORMATION

Should you have a flight out of the Barcelona airport prior to 10:30 a.m. on debarkation morning kindly bring your airline tickets to Guest Services on Deck 3, Midship for additional information and assistance.



20/20/20

Combine any of following 3 services:

20 minute Back, Neck & Shoulder Massage, 20 minute Foot & Ankle Massage, 20 min Hydrating Facial, 20 minute Devil's Mint Back Scrub, 20 minute Frangipani Scalp Massage.

Any 3 for \$119

Deck 9, Forward - Phone : 7-1465



Welcome to the port of Funchal, Madeira. Please check your Port Adventures tickets for your meeting times and locations. Ask our friendly team at the Port Adventures Desk, Deck 3, Midship for availability of the Views & Parks tour which gives you sightseeing highlights along the island's coast as well as a visit to a local Wine Lodge.

Port Adventures Desk, Deck 3, Midship

## SHOPPING

### NEW DISNEY CRUISE LINE COMPASS COLLECTION MERCHANDISE

Commemorate your Disney cruise with the new nautical themed Disney Cruise Line merchandise from the Compass collection. Step into White Caps, Deck 4 Forward, for the wide selection of Compass items including hats, t-shirts, and a fleece blanket.

### STYLISH SUNGLASSES

From popular brands such as Prada and Burberry to Fossil and Guess, discover the variety of fashionable sunglasses available today at White Caps, Deck 4, Forward.

### MAUI JIM SUNGLASSES

"A beautiful view of the world." Sunglasses of the future - ground breaking technology. Maui Jim polarized plus two lens technology provides unmatched protection and comfort. White Caps, Deck 4, Midship.

### SEA BAGS

Crafted in Portland, Maine, from real sails collected from sailing communities all over the world, breathing new life into recently retired sails, our totes embody the magic of the sea and bring to every Sea Bags owner a bit of the mystery surrounding the specific sail used in the making of their tote. Visit White Caps today to view the entire collection. Deck 4, Forward.

### DISNEY CRUISE LINE TRANSATLANTIC CROSSING TEE AVAILABLE

Commemorate your sailing on the Disney Magic® Cruise Ship with a t-shirt designed especially for this week's Transatlantic crossing available at White Caps. Then head to Mickey's Mainsail where you'll find a wide selection of 2014 Disney Cruise Line® merchandise. From t-shirts to towels and more, you are sure to find a special souvenir for the whole family. Deck 4, Forward.

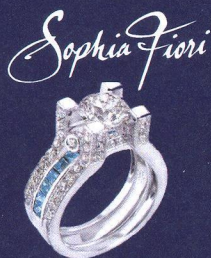
Due to port regulations, when the ship is docked, the stores will remain closed.

### SOPHIA FIORI DIAMOND TRUNK SHOW

Dazzling Diamonds, Tantalizing Tanzanite and many other Jewels.

WHITECAPS

Deck 4, Forward



### DUTY-FREE CAMERAS

All cameras available in Shutters, Deck 4 Aft, come with a quality guarantee and are TAX FREE!

## IMPORTANT INFORMATION

### Security Notice

All Guests (including Children) who wish to disembark or embark the ship are required to present their Key to the World card at the gangway. A photo ID is also required for those Guests who are 18 years of age or older. Guests under the age of 18 are required to have a parent, guardian or other responsible adult sign an authorization form at the Guest Service Desk if they wish to go ashore unaccompanied or with any adult from another stateroom.

**Sunscreen/Insect Repellent Advisory**  
Use sunscreen first and protect against mosquito borne illnesses by applying insect repellent on top of sunscreen when going ashore.

### Cold and Flu Reminder

Please wash hands frequently and thoroughly, particularly before meals. Contact the Health Center by dialing 7-1923, should anyone in your party become ill.

### Inclement Weather

For the safety of all Guests, outdoor events may be changed due to unforeseen weather conditions.

### Corridor Quiet Hours

As a courtesy to all our Guests, please recognize quiet hallway hours from 10:00 p.m. til 8:00 a.m.

### Environmental Message

With Disney's commitment to the Environment please refrain from throwing anything over the Ship's side. Thank you.

### No Reserved Seats Policy

As a courtesy to all Guests we kindly advise that the saving of seats is not permitted in the Walt Disney Theatre, and the saving of the sun loungers is not permitted on Deck 9 and 10. Items left unattended will be returned to lost and found at Guest Services, Deck 3, Midship.

### Smoking

For the comfort of our guests, the following areas are designated as smoking areas:  
• Deck 10 Forward, Starboard Side  
• Deck 9, Forward, Starboard Side at Quiet Cove  
• Deck 4, Starboard Side from 6:00 p.m. to 6:00 a.m. only (all of Deck 4 is non-smoking from 6:00 a.m. to 6:00 p.m.)  
Smoking is prohibited inside all guest staterooms and on stateroom verandahs. Guests found smoking in their staterooms or on their verandahs will be charged a \$250 stateroom recovery fee.

### Walt Disney Theatre

Theatrical performances may use artificial fog, strobe lights, pyrotechnics and other special effects. For the safety of our performers and the comfort of those around you, the use of any photography or video recording device or any electronic equipment is prohibited.

### Verandah Safety

Please do not leave any combustible materials on your balcony when not present in your stateroom for safety reasons.



Morning	8:30	8:45	9:00	9:15	9:30	9:45	10:00	10:15	10:30	10:45	11:00	11:15	11:30	11:45	12:00	12:15	12:30	12:45	1:00	1:15	1:30					
FUNNEL VISION	Snow White (G) Funnel Vision								Pinocchio (G) Funnel Vision								The Hunchback of Notre Dame (G) Funnel Vision									
BUENA VISTA THEATRE	Cars (G) Duration: 1 Hour 56 Minutes										Ratatouille (G) Duration: 1 Hour 51 Minutes															
CHARACTERS																										
FUN FOR ALL AGES							Mickey's Puzzle Playtime 🎮 Disney's Oceaneer Club				Become Iron Man! 🎮 Disney's Oceaneer Club				Stitch's Great Adventure 🎮 Disney's Oceaneer Club											
ADULTS	Abs Attack Senses Spa Fitness Center				Stretch & Relax Class Senses Spa Fitness Center				Group Cycling Senses Spa Fitness Center				Drab to Fab Seminar Senses Spa & Salon													
VIBE 14-17 YEARS OLD																			Youth Activities Open House 🎮							
EDGE 11-14 YEARS OLD	Youth Activities Open House 🎮										Movie Time															
OCEANEER LAB 3-12 YEARS OLD											Super Sloppy Science 🧪						Lunch				Youth Activities Open House 🎮					
OCEANEER CLUB 3-12 YEARS OLD	Youth Activities Open House 🎮										Mickey's Puzzle Playtime 🎮				Become Iron Man! 🎮				Stitch's Great Adventure 🎮				Flying Off to Neverland 🧚			

Afternoon	1:45	2:00	2:15	2:30	2:45	3:00	3:15	3:30	3:45	4:00	4:15	4:30	4:45	5:00	5:15	5:30	5:45	6:00	6:15	6:30	6:45			
FUNNEL VISION					Lilo & Stitch (PG) Funnel Vision								Bolt (PG) Funnel Vision								The Princess Diaries (PG) Funnel Vision			
BUENA VISTA THEATRE											WALL-E (G) Duration: 1 Hour 38 Minutes										Up (PG) Duration: 1 Hour 36 Minutes			
CHARACTERS													Stitch Deck 4, Midship		Captain America Preludes		Chip & Dale Deck 4, Midship		Pluto Deck 4, Midship					
FUN FOR ALL AGES	Pictionary Challenge Promenade Lounge				Disney Trivia Promenade Lounge				Xbox® Challenge O'Gills Pub				Live Music with Midtown Promenade Lounge				Showtime: Lost Locos Ole! Walt Disney Theatre							
ADULTS	Detox for Health & Weight Loss Senses Spa & Salon						Informal Bridge Play O'Gills Pub						Transatlantic Trivia O'Gills Pub						Carrie Stone LIVE O'Gills Pub					
VIBE 14-17 YEARS OLD	Open House		Movie Time												Teen Choice				Super Sloppy Science					
EDGE 11-14 YEARS OLD	Movie Time		Craft Corner		Xbox Challenge						Animation Antics													
OCEANEER LAB 3-12 YEARS OLD	Youth Activities Open House 🎮																				Dinner			
OCEANEER CLUB 3-12 YEARS OLD	Memory Wall 🧠												Picture This 📷											

Evening	7:00	7:15	7:30	7:45	8:00	8:15	8:30	8:45	9:00	9:15	9:30	9:45	10:00	10:15	10:30	10:45	11:00	11:15	11:30	11:45	12:00			
FUNNEL VISION	Pirates of the Caribbean: At World's End (PG-13) Funnel Vision																							
BUENA VISTA THEATRE	Up (PG) Duration: 1 Hour 36 Minutes										Saving Mr. Banks (PG-13) Duration: 2 Hours 5 Minutes													
CHARACTERS	Cinderella Lobby Atrium (P)				Captain America Preludes								Cinderella Lobby Atrium (P)				Mickey Deck 4, Midship				Pluto Deck 4, Midship			
FUN FOR ALL AGES	D Lounge				Showtime: Lost Locos Ole! Walt Disney Theatre								Mickey D Lounge				Family Superstar Karaoke D Lounge							
ADULTS	Pixar Trivia Promenade Lounge				Pub Quiz #3 O'Gills Pub				A Glimpse of Broadway Keys				Live Guitar with Carrie Stone O'Gills Pub				Live Music with Midtown Promenade Lounge				Live Music with Midtown Promenade Lounge			
VIBE 14-17 YEARS OLD	Smoothie Hour						Karaoke Challenge						Invade Edge											
EDGE 11-14 YEARS OLD	Sports Deck Fun						Youth Activities Open House 🎮																	
OCEANEER LAB 3-12 YEARS OLD	Anyone Can Cook 🍳						Animation Cells 🧪																	
OCEANEER CLUB 3-12 YEARS OLD	Aladdin's Fun Adventures 🧚						Dance Party 🎵						Adult Exclusive Open House 🎮						Become Iron Man! 🎮					

Symbol for activities that will be repeated during the cruise

FOLD

Fold along the dotted lines and take me with you so you don't miss any of the fun!

FOLD

IN THE SPOTLIGHT SERIES

SOLVE IT! SERIES

JUMP! UPI! SERIES

CREATE & INVENT SERIES

OPEN HOUSE

CLUBHOUSE SERIES

STORYBOOK SERIES



# BUENA VISTA THEATRE

Deck 5, Aft



8:30 a.m. Duration: 1hr 56 mins Rating: G	1:15 p.m. Duration: 1 hr 51 mins Rating: G	3:30 p.m. Duration: 1 hr 38 mins Rating: G	6:00 p.m. & 8:15 p.m. Duration: 1 hr 36 mins Rating: PG	10:30 p.m. Duration: 2 hrs 5 mins Rating: PG-13
--	---	---	---	--

## Character Appearances

**STITCH**  
Deck 4, Midship - 5:15 p.m.

**CHIP & DALE**  
Deck 4, Midship - 5:45 p.m.

**CAPTAIN AMERICA**  
Preludes  
5:45 p.m. & 7:45 p.m.

**PLUTO**  
Deck 4, Midship  
6:15 p.m. & 9:45 p.m.

**CINDERELLA, SUZY & PERLA**  
Lobby Atrium (P)  
7:45 p.m. & 9:45 p.m.

**MICKEY MOUSE**  
Deck 4, Midship - 10:15 p.m.



(P) - Port Side, (S) - Starboard Side

Don't forget your Camera to capture those Magical Moments!  
Check here each day for Character appearances.  
For detailed Character appearance information, please see the Character Information Board in the Lobby Atrium.  
Meet-and-Greets will be advertised for the length of time the line will be open. To avoid disappointment, please meet at start time of appearances.

## YOUTH ACTIVITIES THEMED EXPERIENCES

- CLUBHOUSE SERIES** focuses on movement and features content which appeals to younger children.
- JUMP UP! SERIES** includes large group games & movement-oriented activities.
- IN THE SPOTLIGHT SERIES** focuses on children's stage presence with lots of activities and enthusiasm.
- STORYBOOK SERIES** is designed with a strong connection to the Disney classic stories.
- CREATE & INVENT SERIES** will have a tactile focus allowing children to create and admire their work.
- SOLVE IT! SERIES** are less active, but will challenge children with problem/solutions-based activities.

### YOUTH ACTIVITIES OPEN HOUSE

Activities for families, adults and children of all ages to enjoy together.

## SHIP DIRECTORY

YOUTH ACTIVITIES		
DISNEY'S OCEANEER CLUB	DECK 5, MID	9:30 AM - 10:00 PM
DISNEY'S OCEANEER LAB	DECK 5, MID	9:30 AM - 12:00 MID
EDGE	DECK 2, MID	10:00 AM - 1:00 AM
IT'S A SMALL WORLD NURSERY	DECK 5, AFT	9:00 AM - 11:30 PM
VIBE	DECK 10, MID	11:00 AM - 2:00 AM

POOLS		
*Children under 12 years of age must have adult supervision in all pools.		
AQUADUNK	DECK 10, MID	12:00 PM - 6:00 PM
AQUALAB	DECK 9, AFT	9:00 AM - 9:00 PM
GOOFY'S POOL	DECK 9, MID	10:00 AM - 8:00 PM
NEPHEW'S SPLASH ZONE	DECK 9, AFT	9:00 AM - 6:00 PM
QUIET COVE POOL (18+)	DECK 9, FWD	6:00 AM - 12:00 MID
TWIST 'N' SPOUT	DECK 9, AFT	11:30 AM - 6:00 PM

RECREATION		
PORT ADVENTURES DESK	DECK 3, MID	9:00 AM - 1:00 PM
SENSES FITNESS CENTER (18+)	DECK 9, FWD	6:30 AM - 10:00 PM
WIDE WORLD OF SPORTS DECK	DECK 10, FWD	24 HOURS

GENERAL INFORMATION		
BUENA VISTA THEATRE	DECK 5, AFT	SHOWTIMES
DISNEY VACATION CLUB DESK	DECK 4, MID	6:00 PM - 10:00 PM
ONBOARD SALES DESK	DECK 4, MID	8:30 AM - 9:30 AM 4:00 PM - 6:00 PM 7:00 PM - 10:00 PM
FUNNEL VISION	DECK 9, MID	SHOWTIMES
GUEST SERVICES	DECK 3, MID	24 HOURS
HAIR BRAIDING	DECK 9, MID	
MEDICAL HEALTH CENTER	DECK 1, FWD	9:30 AM - 11:00 AM 4:30 PM - 7:00 PM
PORT & SHOPPING DESK	DECK 3, MID	
PRELUDES	DECK 4, FWD	5:30 PM - 9:00 PM
QUARTER MASTERS (ARCADE)	DECK 9, MID	24 HOURS
SENSES SPA AND SALON	DECK 9, FWD	8:00 AM - 10:00 PM
SHUTTERS PHOTO GALLERY	DECK 4, AFT	6:00 PM - 10:00 PM
WALT DISNEY THEATRE	DECK 4, FWD	SHOWTIMES

SHOPPING		
MICKEY'S MAINSAIL	DECK 4, FWD	6:45 PM - 11:00 PM
QUACKS	DECK 9, MID	
SEA TREASURES	DECK 3, FWD	6:45 PM - 11:00 PM
VISTA GALLERY	DECK 4, MID	6:45 PM - 11:00 PM
WHITE CAPS	DECK 4, FWD	6:45 PM - 11:00 PM

## TIME ZONE CHANGE

Remember to turn your clocks **FORWARD**  
**1 HOUR** upon retiring on **TUESDAY** evening, or  
first thing **WEDNESDAY** morning.



## IMPORTANT NUMBERS

Fire/Security: 7-3001  
Medical EMERGENCY: 7-3000  
Health Center: 7-1923

<b>DINNER MENU</b>	Animator's Palate: Show Dinner	<b>DRINK OF THE DAY</b>	Bay Breeze (Alcoholic)	<b>WEATHER FORECAST</b>	Today: Partly Sunny
	Carioca's: South American Dinner		Brer Bear's		High: 65°F/18°C
	Lumiére's: French Dinner		Berries n' Cherries (Non - Alcoholic)		Tomorrow: Partly Cloudy
Dining Times: 6:00 p.m. & 8:30 p.m.		<b>Evening Attire: Cruise Casual</b>		High: 67°F/19°C	

## DINING & LOUNGES

BREAKFAST		
CABANAS	DECK 9, AFT	7:30 AM - 11:30 AM
DAISY'S DE LITES	DECK 9, AFT	7:00 AM - 9:00 AM
LUMIÈRE'S (À-LA CARTE)	DECK 3, MID	8:00 AM - 9:30 AM

LUNCH		
CABANAS	DECK 9, AFT	11:30 AM - 3:00 PM
DAISY'S DE LITES	DECK 9, AFT	11:00 AM - 6:00 PM
LUMIÈRE'S	DECK 3, MID	12:00 PM - 1:30 PM
PETE'S BOILER BITES	DECK 9, AFT	11:00 AM - 6:00 PM
PINOCCHIO'S PIZZERIA	DECK 9, MID	11:00 AM - 6:00 PM

DINNER		
ANIMATOR'S PALATE	DECK 4, AFT	6:00 PM & 8:30 PM
CABANAS TABLE SERVICE	DECK 9, AFT	6:30 PM - 8:30 PM
CARIOCA'S	DECK 3, AFT	6:00 PM & 8:30 PM
LUMIÈRE'S	DECK 3, MID	6:00 PM & 8:30 PM
PALO (FOR RESERVATIONS CALL 7-6843)	DECK 10, AFT	6:00 PM - 8:30 PM
PETE'S BOILER BITES	DECK 9, AFT	6:00 PM - 10:00 PM

LATE NIGHT SNACKS		
O'GILLS PUB	DECK 3, FWD	10:45 PM - 11:45 PM
PINOCCHIO'S PIZZERIA	DECK 9, MID	9:30 PM - 12:00 MID
PROMENADE LOUNGE	DECK 3, AFT	10:45 PM - 11:45 PM

ADDED FEATURES		
EYE SCREAM	DECK 9, AFT	11:00 AM - 11:00 PM
BEVERAGE STATION	DECK 9, AFT	24 HOURS
ROOM SERVICE	DIAL 7-4330	24 HOURS

## ENTERTAINMENT - LOUNGES - BARS

Adults must be 21 and older to consume alcoholic beverages.

AFTER HOURS	DECK 3, FWD	(AFTER 9:00 PM. ADULTS ONLY)
COVE CAFE (18+)	DECK 9, MID	7:00 AM - 12:00 MID
D LOUNGE	DECK 4, MID	SHOWTIMES
FATHOMS (18+)	DECK 3, FWD	7:00 PM - 2:00 AM
FROZEN TREATS	DECK 9, AFT	11:00 AM - 8:00 PM
INTERNET CAFE	DECK 3, AFT	24 HOURS
KEYS (18+)	DECK 3, FWD	7:00 PM - 12:30 AM
O'GILLS PUB (18+)	DECK 3, FWD	12:00 PM - 12:30 AM
PRELUDES	DECK 4, FWD	5:30 PM - 9:00 PM
PROMENADE LOUNGE	DECK 3, AFT	9:00 AM - 12:00 MID
PINOCCHIO'S PIZZERIA	DECK 9, MID	9:00 AM - 12:00 MID
SIGNALS (18+)	DECK 9, FWD	9:30 AM - 10:30 PM

Public Health Advisory: Consuming raw or undercooked meats, poultry, seafood, shellfish, or eggs may increase your risk for foodborne illness, especially if you have certain medical condition.

All Ashore: Approx. 9:30 a.m.  
All Aboard: 5:45 p.m.

Ship's Agent In Funchal

Blandy Shipping  
Avenida Zarco No.2, 9000-069 Funchal Madeira, Portugal  
Hugo Ferreira - Operations Director  
T: +351 291 200 647; Mobile: +351 96 627 1610



# FUNCTIONAL SHOPPING MAP

## AT A GLANCE

**Capital:**  
Madeira

**Location:**  
Southeast off the coast  
of Portugal

**Population:**  
100,847

**Language:**  
Portugese

**Currency:**  
Euro

**Banking:**  
Banco Tolla and Azores located in the  
harbor are open Monday  
through Friday

**Post Office:**  
The nearest post office is Correos de  
Portugal located at the harbor

**Transportation:**  
Taxis are available from the pier side

**Shopping Hours:**  
Shops are open: 9:00am - 1:00pm,  
3:00pm - 7:00pm Monday through Friday  
and 9:00am - 1:00pm on Saturdays.  
The recommended shops will be open  
all day when the ship is in port

Browse your Destination Guide  
(found in your stateroom)  
for more details.

## PORT ADVENTURERS...

Check your ticket for the correct meeting time and location of your tour. Your Port Adventures Team will direct you to transportation.

## DON'T FORGET YOUR...

Photo ID and Key to the World Card as well as Cash and/or Credit Cards. Do you have your VIP cards?



## CHANNEL 26-6...

Watch channel 26-6 for insider tips on how to spend your free time, before or after your tour and where to find the best local goods ashore! Stop by Kristen's desk for more information to help create the best experience for you and your family!

### SHOPPING GUIDE



*Gemma*



# PORT SHOPPING MAP

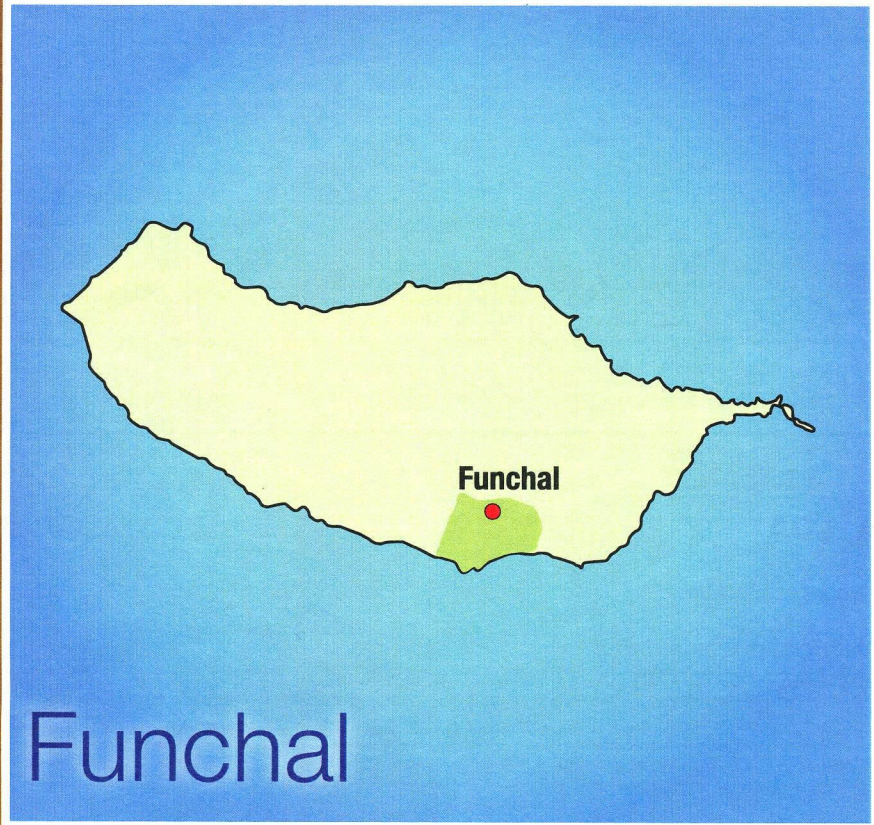
## Funchal











## AN OVERVIEW OF FUNCHAL

It is eternally spring on this small, peaceful, volcanic island of Madeira set in the Atlantic Ocean. Soaring cliffs, clear blue water, stunning mountains and deep canyons, beautiful flowers and vast vineyards beckon.

Prince Henry the Navigator discovered the island in the 1400's. He was so enchanted with the island that he returned with Cretan and Cyprus grapevines and Sicilian sugar cane, setting Madeira on its future path as a source of fine wine. Merchants and sailors discovered this delightfully temperate crossroads in the ocean too, stopping to rest and trade on their journeys between Africa, India and Europe.

Stroll along Funchal's elegant and bustling sea front promenade. Visit a delightful market and view ornate 16th and 17th century buildings and churches lining the capital's streets and alleys.

These islands are noted as the source of Madeira wine. The islands are also known by the flowers and sub-tropical fruits. Most of the early settlers were from the Portuguese regions of the Algarve and Minho. The islands have historical monuments, streets and plazas (praças) with many gardens and typical small towns. Madeira is known for its beautiful rolling green mountains, and the most breath taking display of flowers. Orchids and birds of paradise rarely seen outside of Hawaii and Pacific Islands.

There are beautiful gardens everywhere. For the first time in Portugal, the Gold award in the 2000 competition for the Greening and Flowering of Towns and villages was presented to the city of Funchal. This award was sought after by hundreds of cities in Europe. It was also awarded as the cleanest city in Portugal.

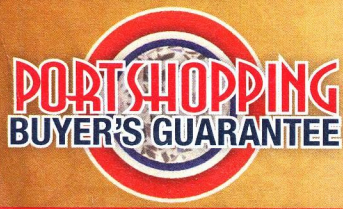
### IN CASE OF EMERGENCY...

#### Funchal (Madeira) Port Agent:

Blatas Lda (Blandy Shipping)  
 Avenida Zarco No. 2, 9000-069 Funchal, Madeira, Portugal  
 e-mail: [shipping@blandy.com](mailto:shipping@blandy.com)  
 Call: 011+351-291-200-640 Fax: 011+351-291-226-403

General Manager – Hugo Ferreira  
 Call: 011+351-291-200-647 Mobile: 011+351- 966-27-1610

Chris Blandy  
 e-mail: [chris.blandy@blandy.com](mailto:chris.blandy@blandy.com)  
 Call: 011+351-291-200-600 Mobile: 011+351-911-038-803



Shop with confidence at each of the recommended stores. All stores listed on the map have paid a promotional fee and given Disney Cruise Line guests a Buyer's Guarantee valid for 60 days after purchase. This guarantee is valid for repair or exchange. Please note the following conditions that apply to the guarantee: Guest negligence or buyer's regret is excluded. Only appraisals from independent, accredited graduate gemologists not affiliated with any retail jeweler will be considered. Electronics and watches requiring service must be returned by the consumer to the respective manufacturer. All purchases, including fragile items, must be checked before leaving the store. Do not mail merchandise without prior authorization. Guests are responsible for postage and appraisal costs. PPI Group, 6261 NW 6th Way, Suite 100, Ft. Lauderdale, FL 33309, Customer Service: 1.888.774.4768 or 954.377.7777, email: [Service@ppiigroup.com](mailto:Service@ppiigroup.com) European guests may contact: [rcentofanti@ppiigroup.com](mailto:rcentofanti@ppiigroup.com), +39 338 8687581.