

# PERSONAL NAVIGATOR

Sunrise: 7:44 a.m. Sunset: 9:41 p.m.  
Evening Attire: Formal

Today: Partly Cloudy High: 70°F/21°C  
Tomorrow: Sunny High: 75°F/24°C

WEDNESDAY, MAY 28, 2014

DAY AT SEA

## SHOWTIME FEATURING THE MUSIC OF STRINGFEVER


WALT DISNEY THEATRE

Deck 4, Forward

6:30 p.m. & 8:45 p.m.

As a courtesy to all Guests, we kindly advise that the saving of seats is **not** permitted in the Walt Disney Theatre.



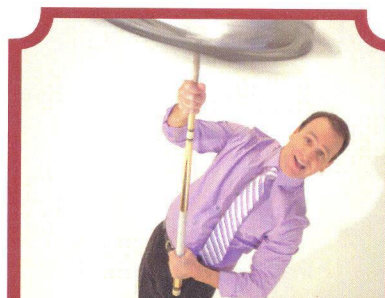
 Assistance available at the entrance to the Walt Disney Theatre 30 minutes prior to show time.

## Disney MAGIC STEERING COMMITTEE



THOMAS PRAXMARER  
HOTEL DIRECTOR

Thomas joined DCL as Chef de Cuisine in 2001. Previously he has worked for Royal Viking Line and Crystal Cruises in various positions of the Hotel Operation. Thomas began his career at age 15, working in hotels and restaurants in Austria, Switzerland, Germany and Sweden. Thomas completed his studies of hotel management in Innsbruck, Austria, and brings more than 29 years of hotel and cruise industry experience to DCL.



### FAMILY VARIETY

Featuring the Physical Comedy of Max Winfrey, in this fun for all the family cabaret show.

Fathoms,  
Deck 3, Forward,  
7:45 p.m.

### Don't Miss:

**Malaga: Historic Gateway to Andalusia**  
*Animator's Palate, Deck 4, Aft - 10:30 a.m. & 12:15 p.m.*  
Join Charles Richardson to learn the importance of one of Spain's most historic cities.

**Jack-Jack's Incredible Diaper Dash**  
*Lobby Atrium, Deck 3, Midship - 11:00 a.m.*  
Calling all baby Cruisers! It's time to take to the mat to see who's the fastest crawler of the seven seas! Register your baby 15 minutes prior to the big race.

**Q & A with the Captain & Steering Committee**  
*Fathoms, Deck 3, Forward - 1:00 p.m.*  
Join the Steering Committee for an informal Q&A session.

**An Evening of Alan Menken (18+)**  
*Walt Disney Theatre, Deck 4, Forward - 10:45 p.m.*  
Join the cast of the Walt Disney Theatre as they perform some of their favorite songs composed by Alan Menken. (Doors open at 10:30 p.m.)

## Disney CRUISE LINE PORT ADVENTURES

Stop by the Port Adventures Desk, located on Deck 3, Midship, where our friendly team will assist you to plan your adventure to our ports of call!

### DINNER MENU

Animator's Palate: Captain's Gala  
Carioca's: Captain's Gala  
Lumière's: Captain's Gala

### DRINK OF THE DAY

Melon Margarita (Alcoholic)  
Abu Juice (Non Alcoholic)

### IMPORTANT NUMBERS

Fire/Security: 7-3001  
Medical Emergency: 7-3000  
Health Center: 7-1923

# ADULT ACTIVITY HIGHLIGHTS

## SENSES SPA FITNESS CLASSES & SEMINARS

*Stretch & Relax* - Senses Spa Fitness Center - 8:00 a.m.  
*Body Sculpt Boot Camp* - Senses Spa Fitness Center - 9:00 a.m.  
*Group Cycling* - Senses Spa Fitness Center - 10:00 a.m.  
*Skin Seminar* - Senses Spa & Salon - 10:30 a.m.  
*Back Pain Solutions* - Keys - 11:00 a.m.  
*Burn Fat Faster* - Senses Spa & Salon - 11:00 a.m.  
*Beat the Body Fat Blues* - Senses Spa & Salon - 1:00 p.m.  
*Good Feet: Relieving Back Pain* - Senses Spa & Salon - 2:30 p.m.  
*Secrets to a Flatter Stomach* - Senses Spa & Salon - 4:00 p.m.  
*Abs Attack* - Senses Spa Fitness Center - 5:00 p.m.



## TASTING CLASSES

*Chocolate & Liquor Tasting* (21+) - Keys - 12:30 p.m.  
*Mixology* (21+) - Keys - 2:30 p.m.  
*Cognac Tasting* (21+) - Cove Cafe - 10:30 p.m.  
 Please make reservations for tastings at Guest Services for a nominal fee.  
 Tasting Seminars are only for Guests 21 and Older.

## CLUB 18\*21 - BRUNCH

*Lumiere's, Deck 3, Midship - 11:30 a.m.*  
 Get to know your fellow 18\*21 guests during brunch.

## CLUB 18\*21 - MIXER

*O'Gills Pub, Deck 3, Forward - 10:15 p.m.*  
 Come to join fellow cruisers your own age at our exclusive Club 18\*21 event.

## CLUB 18\*21 - STORM THE VIBE

*Vibe, Deck 10, Midship - 11:15 p.m.*  
 Join your fellow cruisers aged 18 to 21 as we storm the vibe.

## ULTIMATE DISNEY TRIVIA

*O'Gills Pub, Deck 3, Forward - 2:15 p.m.*  
 Join us for the Ultimate test of your Disney Knowledge in this fun trivia.

## 80'S MUSIC TRIVIA

*O'Gills Pub, Deck 3, Forward - 7:45 p.m.*  
 Let's step back in time as we test your 80's music knowledge.

## LOVE SONGS OF YESTER-YEAR

*Keys, Deck 3, Forward - 7:45 p.m.*  
 Join some your Walt Disney Theatre performers as they showcase some of the best love songs from the 1930's and 40's, including composers Gershwin and Porter.

## AN EVENING OF ALAN MENKEN

*Walt Disney Theatre, Deck 4, Forward - 10:45 p.m.*  
 Join the cast of the Walt Disney Theatre as they perform some of their favorite songs composed by Alan Menken. (Doors open at 10:30 p.m.)



# FUN FOR ALL AGES HIGHLIGHTS

## PHOTO CHALLENGE - OFFICER PHOTOS

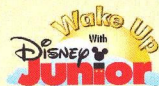
*Port Adventures Desk, Deck 3, Midship*  
 Stop by the Port Adventures Desk, Deck 3 Midship, to pick up the last of our 4 photo challenges of the cruise. Complete at your own leisure but please return the form before 10:00 p.m. tonight. The winner will be announced during Friday's Morning Show.

## MORNING SHOW

*Promenade Lounge, Deck 3, Aft - 9:30 a.m.*  
 Tune in to channel 27-5, or join us in Promenade Lounge for your Cruise Director's Morning Show, as they discuss all the top tips and must-see events of the day.

## WAKE UP WITH DISNEY JUNIOR

*D Lounge, Deck 4, Midship - 9:30 a.m.*  
 What happens when you experience unlimited fun with your favorite Disney Junior shows? You get an exciting dance party designed especially for preschoolers ages seven and under.



## MALAGA: HISTORIC GATEWAY TO ANDALUSIA

*Animator's Palate, Deck 4, Aft - 10:30 a.m. & 12:15 p.m.*  
 Join Charles Richardson to learn the importance of one of Spain's most historic cities

## MAIN STAGE Q & A

*Fathoms, Deck 3, Forward - 10:30 a.m.*  
 Ever wondered what it would be like to perform on the Walt Disney Theatre stage? Join some of your Walt Disney Theatre Cast for this informal Q & A session.

## BEHIND THE SCENES OF WALT DISNEY IMAGINEERING

*Fathoms, Deck 3, Forward - 11:30 a.m.*  
 Join Imagineer Patrick Rand to learn about Walt Disney Imagineering-how Imagineers create magical places and experiences for their Guests. The presentation will also give insight as to what Walt Disney Imagineers are currently working on.

## DISNEY CHANNEL ON DECK

*Deck Stage, Deck 9, Midship - 12:15 p.m.*  
 Don't change that channel! It's time for a Disney Channel afternoon poolside! Your cruise staff will host an exciting day of games and contests in between your favorite Disney Channel shows! So sit back, relax, and enjoy the sun!



## DANCE CLASS - SALSA

*Fathoms, Deck 3, Forward - 2:15 p.m.*  
 Join dance instructors Beverly and Curtis as they teach you the basics of the Salsa.

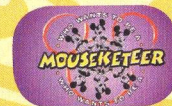
## \$10,000 MEGA JACKPOT BINGO

*Fathoms, Deck 3, Forward - 4:15 p.m.*  
 It's Big, it's Massive, it's Supersized! It's \$10,000 MEGA Jackpot Bingo! Take home \$10,000 if you can cover your card in 46 numbers or less. If not, we carry on to play for the biggest cash prize of the session. Pre Sales start 15 minutes prior to game.



## WHO WANTS TO BE A MOUSEKETEER?

*D Lounge, Deck 4, Midship - 10:00 p.m.*  
 Your chance to get in to the "hot seat" and win limited edition prizes. Or, play along as part of our live studio audience.



# YOUTH ACTIVITIES HIGHLIGHTS

## DINE & PLAY

As a convenience for families dining at 8:30 p.m., our Youth Activities Counselors will be available at 9:30 p.m. at the entrance of Lumiere's and Carioca's and 9:45 p.m. at Animator's Palate to bring registered children to join the fun in Disney's Oceaneer Club and Disney's Oceaneer Lab.



**Deck 5, Aft (7-5864) 9:00 a.m. - 11:30 p.m.**

Infants and Toddlers can enjoy toys and activities at It's a Small World Nursery. Reservations are first come, first served so please stop by!



**Deck 5, Midship (7-1440) 9:30 a.m. - 2:00 a.m.**

### ALOHA LUAU

1:00 p.m.

It's party time, Hawaiian style! Come join us for a Luau experience and learn how to dance like Lilo & Stitch.

### BECOME IRON MAN!

6:15 p.m.

Do you want to be Iron Man? Marvel's Avengers Academy invites you to virtually suit up in Iron Man's armor for an exciting interactive training gauntlet.



**Deck 5, Midship (7-1445) 9:30 a.m. - 10:30 p.m.**

### MONSTROPOLIS MOST WANTED

11:00 a.m.

Have fun while you look for clues, play puzzle games, and find out which monster stole the children's door.

### ANYONE CAN COOK

2:00 p.m.

Anyone can cook as we work together to create some of our favorite treats.



**Deck 2, Midship (7-5816) 11:00 a.m. - 1:00 a.m.**

### ANIMATION CELLS

1:00 p.m.

Learn what it takes to be a Disney Animator, then put your new skills to the test as you create your very own animation cell.

### LIGHTS, CAMERA, IMPROV!

9:30 p.m.

Perform an improv skit as you discover the wonders of drama and music on stage in front of a live audience.



**Deck 10, Midship (7-18517) 10:00 a.m. - 11:30 p.m.**

### ICE CREAM SOCIAL

12:30 p.m.

I scream, you scream, we all scream for ice cream! Make your own frosty treat with your Counselors.

### PUMP IT UP

9:00 p.m.

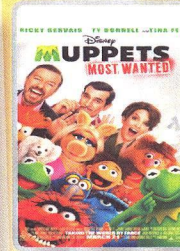
Join us in the Fitness Center for a Teen Only workout. Meet in Vibe to join in!

# BUENA VISTA THEATRE

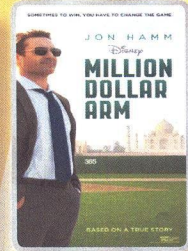
## Deck 5, Aft Today's Movies



8:30 a.m.  
Duration:  
1 hr 43 mins  
Rating: G

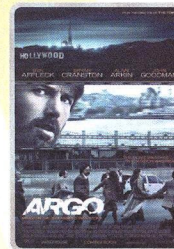


10:45 a.m.  
Duration:  
1 hr 52 mins  
Rating: PG

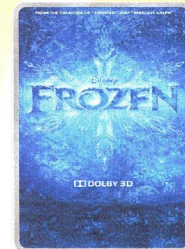


1:00 p.m. & 10:30 p.m.  
Duration:  
2 hrs 4 mins  
Rating: PG

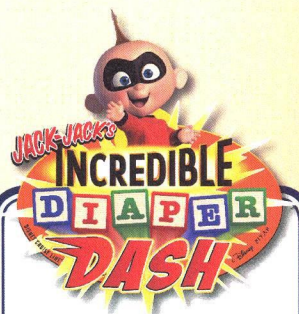
**DOLBY 3D**



3:30 p.m.  
Duration:  
2 hrs 2 mins  
Rating: R



6:00 p.m. & 8:15 p.m.  
Duration:  
1 hr 48 mins  
Rating: PG



Calling all baby cruisers! The Disney Magic's babies take to the mat to see who's the fastest crawler of the seven seas!

**Lobby Atrium,  
Deck 3, Midship,  
11:00 a.m.**

Disney Cruise Line  
**ANYONE CAN COOK**  
Culinary Series

### COOKING INTO THE FUTURE

Join your Chef de Cuisines for our unique Cooking Into The Future: Molecular Show. Followed by our Dinner Party seminar at 1:00 p.m.

**D Lounge (18+)  
Deck 3, Midship  
10:30 a.m.**

## YOUTH ACTIVITIES OPEN HOUSE

Open House is an opportunity for all to come and participate in a variety of exciting activities and free time in the Oceaneer Club, Oceaneer Lab, Edge, Vibe, and It's a Small World Nursery throughout the cruise. During these times secured programming will still be offered in the other venues for those looking to check their children into care.

Vibe: 4:30 p.m. - 6:30 p.m.  
Edge: 10:00 a.m. - 11:30 a.m.

Disney's Oceaneer Lab: 9:30 a.m. - 11:00 a.m.  
Disney's Oceaneer Club: 3:00 p.m. - 5:00 p.m.

# MORE TO ENJOY WHILE ONBOARD

## ALASKA AWAITS

Take your family on an Alaskan adventure they'll never forget! Sail through magnificent fjords fed by glaciers. Discover untamed nature and walk in the footsteps of prospectors. Begin your adventure today! Visit the Onboard Sales Desk to learn more about our special onboard booking offer.

## DISNEY VACATION CLUB® GROUP PREVIEW

Want to learn more about taking magical vacations year after year? Please see a Disney Vacation Club representative on Deck 4, Midship, or call 7-2805 from your stateroom phone for more information about our interactive group presentation.

## CURRENCY EXCHANGE

Euros will be available for exchange at Guests Services, Deck 3, Midship, 24 hrs a day. Not all currencies will be exchanged onboard, so please check with Guests Services for further information.

## Connect@Sea

We are now offering a NEW and improved Internet service to stay connected on your cruise like no other in the industry! Internet packages range from \$0.25 per MB - \$89.00 (1000 MB package). For more information contact your Connect@Sea Expert or Guest Services onboard.

## EARLY FLIGHT INFORMATION

Should you have a flight out of the Barcelona airport prior to 10:30 a.m. on debarkation morning kindly bring your airline tickets to Guest Services on Deck 3, Midship for additional information and assistance.

## QUARTER MASTERS ARCADE

For those who love bowling, reveal your amazing skills and get that STRIKE! Try out Family Bowling fun for all ages, Quarter Masters Arcade, located on Deck 9, Midship.



## SENSES SPA & SALON

### BAMBOO SAMPLER

Stretch your muscle with unique techniques for 25 minutes and receive a 25 minute relaxing foot massage for only \$119.

*Deck 9, Forward - Phone : 7-1465*

## Disney CRUISE LINE PORT ADVENTURES

Malaga is filled with multiple sightseeing tours visiting scenic sites. The best that Andalusia has to offer is still available at the Port Adventures Desk located on Deck 3 Midship where our friendly team can assist you plan your day to explore the best Malaga has to offer.

**Port Adventures Desk, Deck 3, Midship**

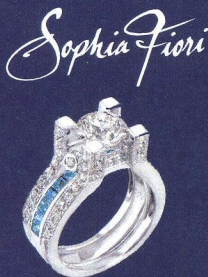
## SHOPPING

## SOPHIA FIORI

Industry leaders in vivid colored diamonds, and more specifically Caribbean blue diamonds - one of the single most popular purchases at sea because it reminds everyone of the colors of the breathtaking ocean!

### WHITE CAPS

*Deck 4, Forward*



## SOPHIA FIORI GUESS THE CARAT WEIGHT

Whoever guesses closest, throughout today, wins a Sophia Fiori 5 Carat Midnight Sapphire or Midnight Sapphire Studs! Winners announced tonight at 7:45 p.m. Must be present to win. White Caps, Deck 4, Forward.

## SPECIAL OFFER - DISNEY CRUISE LINE® UNISEX TEES

Looking for something to commemorate your voyage? For a limited time, Disney Cruise Line® Unisex Tees will be available for \$19.95 each, or 2 for \$30. Stop by White Caps today and take advantage of this special offer! Deck 4, Forward.

## BE A DISNEY PRINCESS!

Come to Mickey's Mates and find everything you need to be a Disney Princess. Princess dresses, tiara's, shoes and many more accessories available. Mickey's Mainsail, Deck 4, Forward.

## 2014 DISNEY CRUISE LINE MERCHANDISE

Step into Mickey's Mainsail today and commemorate your Disney cruise with a wide selection of 2014 Disney Cruise Line merchandise. From t-shirts to photo albums and more, you are sure to find a special souvenir for the whole family. Deck 4, Forward.

## FRAGRANCE OF THE DAY

Visit White Caps and check out today's featured fragrance as well as a vast selection of designer name fragrance brands such as Estée Lauder and Killer Queen by Katy Perry. Deck 4, Forward.

## Shutters

### SAY CHEESE!

Your family is dressed up and ready to enjoy the evening. Capture the memories in your formal attire by visiting our professional portrait studios in the Lobby Atrium, Deck 3, Midship from 5:15 p.m. - 6:00 p.m., 7:30 p.m. - 8:30 p.m., and 9:30 p.m.-10:15 p.m.

D18807 05.28.2014 ©DISNEY

## IMPORTANT INFORMATION

### Security Notice

All Guests (including Children) who wish to disembark or embark the ship are required to present their Key to the World card at the gangway. A photo ID is also required for those Guests who are 18 years of age or older. Guests under the age of 18 are required to have a parent, guardian or other responsible adult sign an authorization form at the Guest Service Desk if they wish to go ashore unaccompanied or with any adult from another stateroom.

### Sunscreen/Insect Repellent Advisory

Use sunscreen first and protect against mosquito borne illnesses by applying insect repellent on top of sunscreen when going ashore.

### Cold and Flu Reminder

Please wash hands frequently and thoroughly, particularly before meals. Contact the Health Center by dialing 7-1923, should anyone in your party become ill.

### Inclement Weather

For the safety of all Guests, outdoor events may be changed due to unforeseen weather conditions.

### Corridor Quiet Hours

As a courtesy to all our Guests, please recognize quiet hallway hours from 10:00 p.m. til 8:00 a.m.

### Environmental Message

With Disney's commitment to the Environment please refrain from throwing anything over the Ship's side. Thank you.

### No Reserved Seats Policy

As a courtesy to all Guests we kindly advise that the saving of seats is not permitted in the Walt Disney Theatre, and the saving of the sun loungers is not permitted on Deck 9 and 10. Items left unattended will be returned to lost and found at Guest Services, Deck 3, Midship.

### Smoking

For the comfort of our guests, the following areas are designated as smoking areas:

- Deck 10 Forward, Starboard Side
- Deck 9, Forward, Starboard Side at Quiet Cove
- Deck 4, Starboard Side from 6:00 p.m. to 6:00 a.m. only (all of Deck 4 is non-smoking from 6:00 a.m. to 6:00 p.m.)




Smoking is prohibited inside all guest staterooms and on stateroom verandahs. Guests found smoking in their staterooms or on their verandahs will be charged a \$250 stateroom recovery fee.



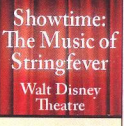
### Walt Disney Theatre


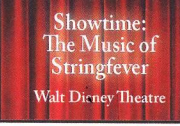

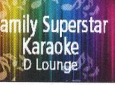
Theatrical performances may use artificial fog, strobe lights, pyrotechnics and other special effects. For the safety of our performers and the comfort of those around you, the use of any photography or video recording device or any electronic equipment is prohibited.

### Verandah Safety

Please do not leave any combustible materials on your balcony when not present in your stateroom for safety reasons.

Morning	8:30	8:45	9:00	9:15	9:30	9:45	10:00	10:15	10:30	10:45	11:00	11:15	11:30	11:45	12:00	12:15	12:30	12:45	1:00	1:15	1:30
FUNNEL VISION	The Aristocats (G) Funnel Vision						The Princess and the Frog (G) Funnel Vision						Disney Channel on Deck Funnel Vision			Virtual Tours Funnel Vision					
BUENA VISTA THEATRE	Toy Story 3 (G) Duration: 1 Hour 43 Minutes						Muppets Most Wanted (PG) Duration: 1 Hour 52 Minutes						Million Dollar Arm (PG) Duration: 2 Hours 4 Minutes								
CHARACTERS				Stitch Lobby Atrium (P)		Goofy & Max Lobby Atrium (P)		Hook & Smee Lobby Atrium (P)					Character Dance Party Lobby Atrium								
FUN FOR ALL AGES	Toddler Time D Lounge		Walk A Mile Preludes		Morning Show Promenade Lounge				Main Stage Q & A Fathoms		 Lobby Atrium		Behind the Scenes of Walt Disney Imagineering Fathoms		 Deck Stage				Q & A with the Captain & Steering Committee Fathoms		
				Wake Up with Disney Junior D Lounge		Super Sloppy Science Disney's Oceaneer Lab		Malaga: Historic Gateway to Andalusia Animator's Palate					Malaga: Historic Gateway to Andalusia Animator's Palate		Who Am I? Promenade Lounge						
ADULTS	Friends of Bill W. Keys		Boot Camp Senses Spa Fitness Center				Book Exchange Cove Cafe		 Disney's Oceaneer Club		Cooking into the Future D Lounge		Club 18*21 - Brunch Lumiere's				Chocolate Tasting (21+) Keys		Dinner Party Seminar D Lounge		
						Group Cycling Senses Spa Fitness Center						Singles' Brunch Lumiere's						Live Guitar with Carrie Stone Quiet Cove Pool			
VIBE 14-17 YEARS OLD							Coffee Break			Trivia Challenge			Ice Cream Social								
EDGE 11-14 YEARS OLD							Youth Activities Open House			Sports Deck Fun						Animation Cells					
OCEANEER LAB 3-12 YEARS OLD							Youth Activities Open House			Monstropolis Most Wanted			Lunch								
OCEANEER CLUB 3-12 YEARS OLD							Huey, Dewey and Louie			Swingin' Like Tarzan			Lunch			Open House Aloha Luau					

Afternoon	1:45	2:00	2:15	2:30	2:45	3:00	3:15	3:30	3:45	4:00	4:15	4:30	4:45	5:00	5:15	5:30	5:45	6:00	6:15	6:30	6:45
FUNNEL VISION	The Lion King (G) Funnel Vision						Tangled (PG) Funnel Vision						Hannah Montana: The Movie (G) Funnel Vision								
BUENA VISTA THEATRE							Argo (R) Duration: 2 Hours 2 Minutes						Frozen (PG)  Duration: 1 Hour 48 Minutes								
CHARACTERS												Mickey & Minnie Preludes				Donald, Daisy Preludes					
FUN FOR ALL AGES			Dance Class - Salsa Fathoms				Sea Farer's Saga Fathoms		Bingo Pre Sales		 Fathoms				Steering Committee Photo Lobby Atrium				 Walt Disney Theatre		
	Crafts: Memory Pages Promenade Lounge				Disney Vacation Club Group Preview D Lounge		Marvel Avengers Academy Disney's Oceaneer Club		Toddler Time Promenade Lounge				Ballroom Dancing Fathoms		Live Music with Midtown Promenade Lounge						
ADULTS			Ultimate Disney Trivia O'Gills Pub				Music Trivia O'Gills Pub		Creative Crafts O'Gills Pub				Abs Attack Senses Spa Fitness Center								
						Live Music with Duo Azucar Quiet Cove Pool		Secrets to a Flatter Stomach Senses Spa & Salon													
VIBE 14-17 YEARS OLD							Youth Activities Open House						Sports Deck Fun								
EDGE 11-14 YEARS OLD							Anyone Can Cook			Scavenger Hunt											
OCEANEER LAB 3-12 YEARS OLD							Anyone Can Cook						Dinner								
OCEANEER CLUB 3-12 YEARS OLD	Youth Activities Open House						Marvel Avengers Academy						Dinner			Become Iron Man!					

Evening	7:00	7:15	7:30	7:45	8:00	8:15	8:30	8:45	9:00	9:15	9:30	9:45	10:00	10:15	10:30	10:45	11:00	11:15	11:30	11:45	12:00
FUNNEL VISION	High School Musical 2 (TV-G) Funnel Vision						Old Dogs (PG) Funnel Vision														
BUENA VISTA THEATRE	Frozen (PG)  Duration: 1 Hour 48 Minutes						Million Dollar Arm (PG) Duration: 2 Hours 4 Minutes														
CHARACTERS	Mickey & Minnie Preludes					Donald, Daisy Preludes				Mickey & Minnie Preludes				Donald, Daisy Preludes							
FUN FOR ALL AGES			Variety: Max Winfrey Fathoms				 Walt Disney Theatre				 D Lounge		 D Lounge								
			Steering Committee Photo Lobby Atrium		Latin Dance Party D Lounge				Live Music with Midtown Promenade Lounge		Live Music with Midtown Promenade Lounge										
ADULTS			80's Music Trivia O'Gills Pub						DJ Matt Fathoms		Aileen de la Cruz Keys		Club 18*21 - Mixer O'Gills Pub		An Evening of Alan Menken Walt Disney Theatre		Krazy Karaoke & DJ Matt Fathoms		Club 18*21 - Storm the Vibe Vibe		
				Love Songs of Yester-Year Keys																	
VIBE 14-17 YEARS OLD	Sports Deck Fun		Smoothie Hour		Pump It Up												Dance Party				
EDGE 11-14 YEARS OLD	Youth Activities Open House						Lights, Camera, Improv!			Teen Choice											
OCEANEER LAB 3-12 YEARS OLD	Lights, Camera, Improv!						Animation Cells														
OCEANEER CLUB 3-12 YEARS OLD	Camp Out						Memory Wall			Movie Time											

Symbol for activities that will be repeated during the cruise  
 FOLD  
 Fold along the dotted lines and take me with you so you don't miss any of the fun!  
 FOLD  
 IN THE SPOTLIGHT SERIES  
 SOLVE IT! SERIES  
 JUMP UP! SERIES  
 CREATE & INVENT SERIES  
 OPEN HOUSE  
 CLUBHOUSE SERIES  
 STORYBOOK SERIES

WEDNESDAY, MAY 28, 2014 - DAY AT SEA

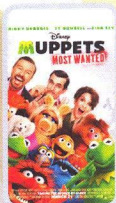
# BUENA VISTA THEATRE

Deck 5, Aft

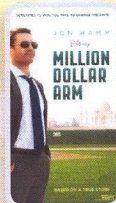
DOLBY 3D



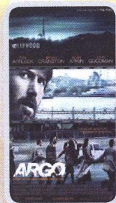
8:30 a.m.  
Duration:  
1 hr 43 mins  
Rating: G



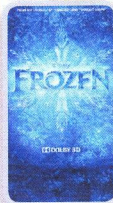
10:45 a.m.  
Duration:  
1 hr 52 mins  
Rating: PG



1:00 p.m. &  
10:30 p.m.  
Duration:  
2 hrs 4 mins  
Rating: PG



3:30 p.m.  
Duration:  
2 hrs 2 mins  
Rating: R



6:00 p.m. &  
8:15 p.m.  
Duration:  
1 hr 48 mins  
Rating: PG

## Character Appearances

**STITCH**  
Lobby Atrium (P) - 9:30 a.m.

**MIKEY & MINNIE**  
Preludes - 5:30 p.m.,  
7:30 p.m. & 10:00 p.m.

**GOOFY & MAX**  
Lobby Atrium (P) - 10:00 a.m.

**DONALD & DAISY**  
Preludes - 6:00 p.m.,  
8:15 p.m. & 10:30 p.m.

**CAPTAIN HOOK & MR SREE**  
Lobby Atrium (P) - 10:30 a.m.

**CHARACTER DANCE PARTY**  
Lobby Atrium - 12:30 p.m.



(P) - Portside, (S) - Starboard Side

Don't forget your Camera to capture those Magical Moments!

Check here each day for Character appearances.

For detailed Character appearance information

see the Character Information Board in the Lobby Atrium.

Meet-and-Greets will be advertised for the length of time the line will be open. To avoid disappointment, please meet at start time of appearances.

## YOUTH ACTIVITIES THEMED EXPERIENCES

**CLUBHOUSE SERIES**  
focuses on movement and features content which appeals to younger children.

**JUMP UP! SERIES**  
includes large group games & movement-oriented activities.

**IN THE SPOTLIGHT SERIES**  
focuses on children's stage presence with lots of activities and enthusiasm.

**STORYBOOK SERIES**  
is designed with a strong connection to the Disney classic stories.

**CREATE & INVENT SERIES**  
will have a tactile focus allowing children to create and admire their work.

**SOLVE IT SERIES**  
are less active, but will challenge children with problem/solutions-based activities.

### YOUTH ACTIVITIES OPEN HOUSE

Activities for families, adults and children of all ages to enjoy together.

## SHIP DIRECTORY

### YOUTH ACTIVITIES

DISNEY'S OCEANEER CLUB	DECK 5, MID	9:30 AM - 2:00 PM
DISNEY'S OCEANEER LAB	DECK 5, MID	9:30 AM - 10:30 PM
EDGE	DECK 2, MID	10:00 AM - 1:00 AM
IT'S A SMALL WORLD NURSERY	DECK 5, AFT	9:00 AM - 11:30 PM
VIBE	DECK 10, MID	10:00 AM - 11:30 PM

### POOLS

\*Children under 12 years of age must have adult supervision in all pools.

AQUADUNK	DECK 10, MID	10:00 AM - 6:00 PM
AQUALAB	DECK 9, AFT	9:00 AM - 9:00 PM
GOOBY'S POOL	DECK 9, MID	9:00 AM - 6:00 PM 8:00 PM - 10:00 PM
NEPHEWS' SPLASH ZONE	DECK 9, AFT	9:00 AM - 6:00 PM
QUIET COVE POOL (18+)	DECK 9, FWD	6:00 AM - 12:00 MID
TWIST 'N' SPOUT	DECK 9, AFT	10:00 AM - 6:00 PM

### RECREATION

PORT ADVENTURES DESK	DECK 3, MID	10:00 AM - 5:00 PM 7:00 PM - 8:30 PM
SENSES FITNESS CENTER (18+)	DECK 9, FWD	6:30 AM - 10:00 PM
WIDE WORLD OF SPORTS DECK	DECK 10, FWD	24 HOURS

### GENERAL INFORMATION

BUENA VISTA THEATRE	DECK 5, AFT	SHOWTIMES
DISNEY VACATION CLUB DESK	DECK 4, MID	10:00 AM - 1:00 PM 5:00 PM - 10:00 PM
ONBOARD SALES DESK	DECK 4, MID	9:30 AM - 12:00 PM 3:00 PM - 6:00 PM 7:00 PM - 10:00 PM
FUNNEL VISION	DECK 9, MID	SHOWTIMES
GUEST SERVICES	DECK 3, MID	24 HOURS
HAIR BRAIDING	DECK 9, MID	9:00 AM - 6:00 PM
MEDICAL HEALTH CENTER	DECK 1, FWD	9:30 AM - 11:00 AM 4:30 PM - 7:00 PM
PORT & SHOPPING DESK	DECK 3, MID	6:30 PM - 8:30 PM
PRELUDES	DECK 4, FWD	5:30 PM - 9:00 PM
QUARTER MASTERS (ARCADE)	DECK 9, MID	24 HOURS
SENSES SPA AND SALON	DECK 9, FWD	8:00 AM - 10:00 PM
SHUTTERS PHOTO GALLERY	DECK 4, AFT	10:00 AM - 10:00 PM
WALT DISNEY THEATRE	DECK 4, FWD	SHOWTIMES

### SHOPPING

MICKEY'S MAINSAIL	DECK 4, FWD	10:00 AM - 11:00 PM
QUACKS	DECK 9, MID	10:30 AM - 4:00 PM
SEA TREASURES	DECK 3, FWD	12:00 PM - 10:00 PM
VISTA GALLERY	DECK 4, MID	11:00 AM - 2:00 PM 4:00 PM - 10:00 PM
WHITE CAPS	DECK 4, FWD	10:00 AM - 11:00 PM

## IMPORTANT NUMBERS

Fire/Security: 7-3001  
Medical EMERGENCY: 7-3000  
Health Center: 7-1923

DINNER MENU

Animator's Palate: Captain's Gala  
Carioca's: Captain's Gala  
Lumière's: Captain's Gala  
Dining Times: 6:00 p.m. & 8:30 p.m.

DRINK OF THE DAY

Melon Margarita (Alcoholic)  
Abu Juice (Non - Alcoholic)

WEATHER FORECAST

Today: Partly Cloudy  
High: 70°F/21°C  
Tomorrow: Sunny  
High: 75°F/24°C

Evening Attire: Formal

## DINING & LOUNGES

### BREAKFAST

CABANAS	DECK 9, AFT	7:30 AM - 11:30 AM
DAISY'S DE LITES	DECK 9, AFT	7:00 AM - 9:00 AM
LUMIÈRE'S BRUNCH	DECK 3, MID	9:00 AM - 12:30 PM
PALO (FOR RESERVATIONS CALL 7-6843)	DECK 10, AFT	10:00 AM - 1:30 PM

### LUNCH

CABANAS	DECK 9, AFT	11:30 AM - 3:00 PM
DAISY'S DE LITES	DECK 9, AFT	11:00 AM - 6:00 PM
LUMIÈRE'S BRUNCH	DECK 3, MID	9:00 AM - 12:30 PM
PALO (FOR RESERVATIONS CALL 7-6843)	DECK 10, AFT	10:00 AM - 1:30 PM
PETE'S BOILER BITES	DECK 9, AFT	11:00 AM - 6:00 PM
PINOCCHIO'S PIZZERIA	DECK 9, MID	11:00 AM - 6:00 PM

### DINNER

ANIMATOR'S PALATE	DECK 4, AFT	6:00 PM & 8:30 PM
CARIOCA'S	DECK 3, AFT	6:00 PM & 8:30 PM
CABANAS TABLE SERVICE	DECK 9, AFT	6:30 PM - 8:30 PM
LUMIÈRE'S	DECK 3, MID	6:00 PM & 8:30 PM
PALO (FOR RESERVATIONS CALL 7-6843)	DECK 10, AFT	6:00 PM - 8:30 PM
PETE'S BOILER BITES	DECK 9, AFT	6:00 PM - 10:00 PM

### LATE NIGHT SNACKS

O'GILLS PUB	DECK 3, FWD	10:45 PM - 11:45 PM
PINOCCHIO'S PIZZERIA	DECK 9, MID	9:30 PM - 12:00 MID
PROMENADE LOUNGE	DECK 3, AFT	10:45 PM - 11:45 PM

### ADDED FEATURES

EYE SCREAM	DECK 9, AFT	11:00 AM - 11:00 PM
BEVERAGE STATION	DECK 9, AFT	24 HOURS
ROOM SERVICE	DIAL 7-4330	24 HOURS

### ENTERTAINMENT - LOUNGES - BARS

Adults must be 21 and older to consume alcoholic beverages.

AFTER HOURS	DECK 3, FWD	(AFTER 9:00 PM, ADULTS ONLY)
COVE CAFE (18+)	DECK 9, MID	7:00 AM - 12:00 MID
D LOUNGE	DECK 4, MID	SHOWTIMES
FATHOMS (18+)	DECK 3, FWD	7:00 PM - 2:00 AM
FROZONE TREATS	DECK 9, AFT	11:00 AM - 8:00 PM
INTERNET CAFE	DECK 3, AFT	24 HOURS
KEYS (18+)	DECK 3, FWD	5:30 PM - 12:30 AM
O'GILLS PUB (18+)	DECK 3, FWD	12:00 PM - 12:30 AM
PRELUDES	DECK 4, FWD	5:30 PM - 9:00 PM
PROMENADE LOUNGE	DECK 3, AFT	9:00 AM - 12:00 MID
PINOCCHIO'S PIZZERIA	DECK 9, MID	9:00 AM - 12:00 MID
SIGNALS (18+)	DECK 9, FWD	9:30 AM - 10:30 PM

Public Health Advisory: Consuming raw or undercooked meats, poultry, seafood, shellfish, or eggs may increase your risk for foodborne illness, especially if you have certain medical condition.

Disney CRUISE LINE.  
**PORT ADVENTURES**

Explore and more with our carefully selected Port Adventures. Pass by the Port Adventures Desk, Deck 3, Midship to find out more.