

PERSONAL NAVIGATOR

Disney MAGIC

FRIDAY, MAY 30, 2014

Sunrise: 6:49 a.m. Sunset: 9:16 p.m.
Evening Attire: Cruise Casual

Today: Sunny High: 75°F/24°C
Tomorrow: Partly Cloudy High: 70°F/21°C

DAY AT SEA



Disney DREAMS

AN ENCHANTED CLASSIC

In this spectacular fantasy, a little girl discovers the power of her dreams. Fly through the air with Peter Pan and your imagination, as many Classic Disney Characters spring to life. With a little Faith, Trust and Pixie Dust you'll see that your dreams can come true!

WALT DISNEY THEATRE
Deck 4, Forward
6:30 p.m. & 8:45 p.m.

As a courtesy to all Guests, we kindly advise that the saving of seats is **not** permitted in the Walt Disney Theatre.



Assistance available at the entrance to the Walt Disney Theatre 30 minutes prior to show time.

Disney MAGIC STEERING COMMITTEE



MICHELE INTARTAGLIA
STAFF CAPTAIN

Michele comes from a sea-faring family and grew up in a small yet famous island close to Naples, Italy. He began his maritime career twenty years ago onboard cargo ships. In 1999 he moved into the cruise industry and joined Disney Cruise Line in December 2011.

TIL WE MEET AGAIN

FAREWELL SHOW

The world-famous Disney Characters and some of your new friends from the Disney Magic stage shows bid you a charming farewell.

Lobby Atrium,
Deck 3, Midship,
10:15 p.m.

Don't Miss:

Farewell Deck Party

Deck Stage, Deck 9, Midship - 1:00 p.m.

It's been an unforgettable journey, but now's the time to say goodbye. Join the Crew of the Disney Magic on deck, for our special farewell celebration.

Behind the Scene's of Animator's Palate

Animator's Palate, Deck 4, Aft - 2:00 p.m.

Join Imagineer Patrick Rand for a look behind the scenes of the newly re-imagined Animator's Palate, including the making of the brand new dinner show, Drawn to Magic.

Family Talent Show

D Lounge, Deck 4, Midship - 7:45 p.m.

Your fellow Guests have rehearsed and are ready to show off their talents. A rehearsal time for those registered for our show will be today at 3:00 p.m. in D Lounge, Deck 4, Midship.

Variety Show: Stringfever (18+)

Fathoms, Deck 3, Forward - 10:45 p.m.

Featuring the unique String Quartet stylings of Stringfever, in this adult exclusive cabaret style show. Followed by our Cruise Staff Farewell.

Debark Talk Broadcast

Important information regarding disembarkation procedures for Barcelona and your journey home will be covered in this debarkation briefing. The broadcast will be shown continuously on channel 24-2 of your stateroom television for your convenience.

Thank you in advance for completing your comment card.

DINNER MENU

Animator's Palate: Til We Meet Again
Carioca's: Til We Meet Again
Lumiére's: Til We Meet Again

DRINK OF THE DAY

Blue Margarita (Alcoholic)
Mango Crush (Non Alcoholic)

IMPORTANT NUMBERS

Fire/Security: 7-3001
Medical Emergency: 7-3000
Health Center: 7-1923

ADULT ACTIVITY HIGHLIGHTS

SENSES SPA FITNESS CLASSES & SEMINARS

Stretch & Relax - Senses Spa Fitness Center - 8:00 a.m.
Body Sculpt Boot Camp - Senses Spa Fitness Center - 9:00 a.m.
Abs Attack - Senses Spa Fitness Center - 10:00 a.m.
Acupuncture: Chinese Herbs - Keys - 10:15 a.m.
Skin Therapy Workshop - Senses Spa & Salon - 10:30 a.m.
How to Increase Your Metabolism - Senses Spa & Salon - 11:00 a.m.
Drab to Fab Seminar - Senses Spa & Salon - 1:00 p.m.
Good Feet: Relieving Back Pain - Senses Spa & Salon - 2:30 p.m.
Point of Well Being - Senses Spa & Salon - 3:00 p.m.
Hair Seminar: How to Reduce Fluff & Frizz - Senses Spa Fitness Center - 3:30 p.m.
Acupuncture For Weight Loss - Keys - 4:00 p.m.
Detox for Health & Weight Loss - Senses Spa & Salon - 4:00 p.m.
Tour De Cycle - Senses Spa Fitness Center - 5:00 p.m.
Total Body Conditioning - Senses Spa Fitness Center - 6:30 p.m.



TASTING CLASSES

Champagne Tasting (21+) - Keys - 12:30 p.m.
Italian Cocktail Tasting (21+) - Keys - 2:30 p.m.
Italian Liquor Tasting (21+) - Cove Cafe - 4:00 p.m.
 Please make reservations for tastings at Guest Services for a nominal fee.
 Tasting Seminars are only for Guests 21 and Older.

CLUB 18*21 - BRUNCH

Lumiere's, Deck 3, Midship - 11:30 a.m.
 Get to know your fellow 18*21 guests during brunch.

CLUB 18*21 - FAREWELL

O'Gills Pub, Deck 3, Forward - 10:15 p.m.
 Join your Cruise Staff and your new friends in this last gathering for some fun

ANYONE CAN COOK - BATTLE OF THE CHEFS

D Lounge, Deck 4, Midship - 10:30 a.m.
LIVE - Battle of the Chefs! Who will dominate to win the ultimate cooking battle.

ULTIMATE DISNEY TRIVIA

O'Gills Pub, Deck 3, Forward - 2:15 p.m.
 Think you know all there is to know about Disney? Come test your knowledge at ultimate Disney trivia for the Adults.

PUB QUIZ #4

O'Gills Pub, Deck 3, Forward - 7:45 p.m.
 Join us as we test your knowledge against your fellow Guests for our final Pub Quiz Challenge. Who will be crowned the ultimate Pub Quiz Champion?



FUN FOR ALL AGES HIGHLIGHTS

MORNING SHOW

Promenade Lounge, Deck 3, Aft - 9:00 a.m.
 Tune in to channel 27-5, or join us in Promenade Lounge for our final Cruise Director's Morning Show, as they discuss all the top tips and must-see events of the day.

BARCELONA: CITY OF CONTRASTS

Animator's Palate, Deck 4, Aft - 9:30 a.m. & 11:30 a.m.
 Join Charles Richardson for an introduction of Barcelona, from its medieval splendor to the bizarre sculptures of Antoni Gaudi.

DREAMS DANCE CLASS

Fathoms, Deck 3, Forward - 10:30 a.m.
 Join some of your Cast from the Walt Disney Theatre, as they teach you a dance routine from tonight's show, *Disney Dreams: An Enchanted Classic!*



COULD GO BINGO

Fathoms, Deck 3, Forward - 11:30 a.m.
 Four CASH prizes to be won! The snowball jackpot continues to grow and could go at this morning's session. Pre Sales start 15 minutes prior to game.



TOWEL FOLDING

D Lounge, Deck 4, Midship - 2:00 p.m.
 Learn to create those amazing towel creatures you've seen in your stateroom all cruise long.

DANCE CLASS - FINAL REVIEW

Fathoms, Deck 3, Forward - 2:15 p.m.
 Join dance instructors Beverly and Curtis as they review all that you have learned this cruise.



FINAL JACKPOT BINGO

Fathoms, Deck 3, Forward - 4:00 p.m.
 The snowball jackpot **MUST BE WON** at this final session! Beat the line and get your cards early. Who will be the lucky winner? It could be you! Pre Sales start 30 minutes prior to game.

JEWISH SABBATH

Keys, Deck 3, Forward - 5:15 p.m.
 A quiet space is reserved for those wishing to conduct their own service.

FAREWELL KARAOKE

D Lounge, Deck 4, Midship - 10:45 p.m.
 Bring along the entire family for one more round of karaoke. This is your last opportunity to grab the mic and sing along to your favorite song.

YOUTH ACTIVITIES HIGHLIGHTS

DINE & PLAY

As a convenience for families dining at 8:30 p.m., our Youth Activities Counselors will be available at 9:30 p.m. at the entrance of Lumiere's and Carioca's and 9:45 p.m. at Animator's Palate to bring registered children to join the fun in Disney's Oceaneer Club and Disney's Oceaneer Lab.



Deck 5, Aft (7-5864) 8:30 a.m. - 11:30 p.m.

Infants and Toddlers can enjoy toys and activities at It's a Small World Nursery. Reservations are first come, first served so please stop by!



Deck 5, Midship (7-1440) 9:30 a.m. - 12:00 mid
(3-12 years old)

STORY TIME WITH BELLE

11:30 a.m.

Come to the Oceaneer Club and listen to one of your favorite Disney stories: Beauty & the Beast!

TOY STORY BOOT CAMP

8:30 p.m.

Join Corporal Green in our own version of boot camp as we learn how to have fun - The Toy Story way!



Deck 5, Midship (7-1445) 9:30 a.m. - 12:00 mid
(3-12 years old)

FRIENDSHIP ROCKS

5:00 p.m.

Come and celebrate with all the children from the Oceaneer Club and Lab in the jammin' performance of Friendship Rocks! You won't want to miss any of the fun.

SUPER SLOPPY SCIENCE

9:30 p.m.

Join Professor Make-O-Mess in some of the most extreme experiments you will ever see in the world of Super Sloppy Science!



Deck 2, Midship (7-5816) 10:00 a.m. - 12:00 mid

GENDER WARS

8:00 p.m.

Join us as we find out who really are the king or queen of the castle.

HOW WELL DO YOU KNOW YOUR COUNSELOR?

10:00 p.m.

Do you think you know all there is to know about your counselors? Come test out your knowledge with all of your friends!



Deck 10, Midship (7-18517) 10:00 a.m. - 1:00 a.m.
(14-17 years old)

ESPN DREAM TEAM DRAFT DAY

5:15 p.m.

Join us and engage in this interactive fantasy sports draft unlike anything you've ever seen! Can YOU draft the greatest sports team of All-Time?

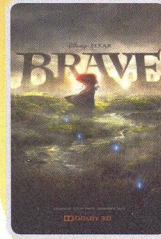
MIX AND MATCH

11:00 p.m.

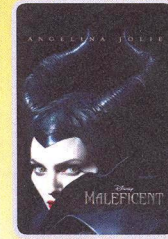
Try to find your "perfect match" in Disney's very own "Dating" game.

BUENA VISTA THEATRE

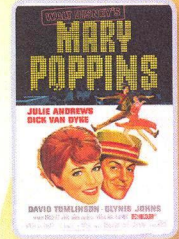
Deck 5, Aft Today's Movies



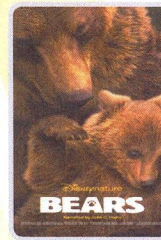
8:30 a.m.
Duration:
1 hr 41 mins
Rating: PG



10:30 a.m. &
3:30 p.m.
Duration:
1 hr 37 mins
Rating: PG



12:45 p.m.
Duration:
1 hr 13 mins
Rating: PG



6:00 p.m. & 8:15 p.m.
Duration: 1 hr 25 mins
Rating: G



10:45 p.m.
Duration: 1 hr 37 mins
Rating: PG

DOLBY 3D



TALENT SHOW

Your fellow Guests have rehearsed and are ready to show off their talents. (A rehearsal time for those registered for our show will be today at 3:00 p.m.)

**D Lounge,
Deck 4, Midship,
7:45 p.m.**



ADULT VARIETY

Featuring the music of Stringfever, as they entertain you in this adult exclusive show.

**Fathoms (18+),
Deck 3, Forward,
10:45 p.m.**

YOUTH ACTIVITIES OPEN HOUSE

Open House is an opportunity for all to come and participate in a variety of exciting activities and free time in the Oceaneer Club, Oceaneer Lab, Edge, Vibe, and It's a Small World Nursery throughout the cruise. During these times secured programming will still be offered in the other venues for those looking to check their children into care.

Edge: 10:00 a.m. - 12:00 p.m.
Edge: 4:00 p.m. - 6:00 p.m.
Vibe: 1:00 p.m. - 3:00 p.m.

Disney's Oceaneer Lab: 1:30 p.m. - 4:00 p.m.
Disney's Oceaneer Club: 9:30 a.m. - 11:30 a.m.

MORE TO ENJOY WHILE ONBOARD

NEW IN 2015!

Chart a magical new course for northern Europe - explore Norwegian fjords - steeped in Viking History from steaming geysers to scenic mountain ranges. Visit the Onboard Sales Desk for more information.



DISNEY VACATION CLUB

Visit the Disney Vacation Club information desk and ask us about show times where you will learn how to turn every vacation into the vacation of a lifetime.



EARLY FLIGHT INFORMATION

Should you have a flight out of the Barcelona airport prior to 10:30 a.m. on debarkation morning kindly bring your airline tickets to Guest Services on Deck 3, Midship for additional information and assistance.

Connect @ Sea

Kindly be advised that after 10:00 p.m. today, new Internet packages will not be available for purchase. Available megabytes from existing packages can continue to be used until the moment of disembarkation.

EXPRESS WALK OFF

This option allows you to take your luggage off the ship at your leisure once the ship has been cleared by the local authorities. You won't need to wait for your luggage to enter the terminal and there is no need to claim it inside the terminal building. Please note that no assistance with luggage is provided for this option.

EXPRESS CHECK OUT

If you have a credit card on file, you qualify for express check out. No need to visit Guest Services to settle your account.



EARLY BIRD SPECIAL

Start your morning with a 25 minute Back Massage and a 25 Minute facial for only \$89.

Today from 8:00 a.m. till 11:00 a.m.

Deck 9, Forward - Phone : 7-1465



Our Barcelona Debarking Tours are still available! On the Montserrat half-day, you will ascend the towering Montserrat Mountain range via railway and tour the world-famous monastery, including the Shrine of Our Lady of Montserrat, or "La Moreneta". You will then enjoy some free time for souvenir shopping before heading to your Disney Cruise Line Hotel or Barcelona Airport.

All tours still available at the
Port Adventures Desk, Deck 3, Midship

SOPHIA FIORI

Industry leaders in vivid colored diamonds, and more specifically Caribbean blue diamonds - one of the single most popular purchases at sea because it reminds everyone of the colors of the breathtaking ocean!

WHITE CAPS

Deck 4, Forward

Sophia Fiori



SHOPPING

OFFICER PIN TRADING

Pick up some Disney Cruise Line® pins when you stop by Mickey's Mainsail, Deck 4, Forward. Receive a Mystery Disney Cruise Line® Anchor Pin for \$2.95 with any merchandise purchase of \$30.00 or more, while supplies last. Later, join the Officers of the Disney Magic® for pin trading fun at 7:30 p.m. in Preludes, Deck 4, Forward.

DISNEY CRUISE LINE TRANSATLANTIC CROSSING TEE AVAILABLE

Visit White Caps today where you can get the specially designed Transatlantic Crossing t-shirt! You can also check out the wide selection of merchandise from the Compass collection. From t-shirts to mugs featuring nautical and Disney Cruise Line® themed icons, commemorate your Disney cruise with one of these great souvenirs. Deck 4, Forward.

CAPTAIN'S SIGNING

Stop by White Caps at 12:15 p.m. to meet the Master of the Disney Magic and have your cruise mementos signed! Stunning replica ships are available in White Caps, Deck 4, Forward. Beautiful Disney Cruise Line® prints are available in the Vista Gallery, Deck 4, Midship.

H2O BATH COLLECTION

Treat yourself to the ultimate indulgence with H2O bath products. H2O offers shampoo, conditioner, lip balm, hydrating body lotion and after sun care. Available in White Caps, Deck 4, Midship.

LAST OPPORTUNITY

This is your last chance to get your hands on our fantastic collection of Sophia Fiori diamond jewelry! Drop in to White Caps. These exquisite diamonds are not available back home so take advantage of these Trunk Show specials and do not miss out!

Shutters

GET THE PICTURE!

Use our kiosks to purchase your GET THE PICTURE! photo disc. No need to choose your photos now. All your stateroom photos will be on the disc and you can unlock them from the comfort of your home! Kiosks are located in Shutters, Deck 4, Aft and Deck 3 outside the Promenade Lounge. Terms and conditions apply.

DMR067 05-30-2014 ©DISNEY

IMPORTANT INFORMATION

Security Notice

All Guests (including Children) who wish to disembark or embark the ship are required to present their Key to the World card at the gangway. A photo ID is also required for those Guests who are 18 years of age or older. Guests under the age of 18 are required to have a parent, guardian or other responsible adult sign an authorization form at the Guest Service Desk if they wish to go ashore unaccompanied or with any adult from another stateroom.

Sunscreen/Insect Repellent Advisory
Use sunscreen first and protect against mosquito borne illnesses by applying insect repellent on top of sunscreen when going ashore.

Cold and Flu Reminder

Please wash hands frequently and thoroughly, particularly before meals. Contact the Health Center by dialing 7-1923, should anyone in your party become ill.

Inclement Weather

For the safety of all Guests, outdoor events may be changed due to unforeseen weather conditions.

Corridor Quiet Hours

As a courtesy to all our Guests, please recognize quiet hallway hours from 10:00 p.m. til 8:00 a.m.

Environmental Message

With Disney's commitment to the Environment please refrain from throwing anything over the Ship's side. Thank you.

No Reserved Seats Policy

As a courtesy to all Guests we kindly advise that the saving of seats is not permitted in the Walt Disney Theatre, and the saving of the sun loungers is not permitted on Deck 9 and 10. Items left unattended will be returned to lost and found at Guest Services, Deck 3, Midship.

Smoking



For the comfort of our guests, the following areas are designated as smoking areas:
• Deck 10 Forward, Starboard Side
• Deck 9, Forward, Starboard Side at Quiet Cove
• Deck 4, Starboard Side from 6:00 p.m. to 6:00 a.m. only (all of Deck 4 is non-smoking from 6:00 a.m. to 6:00 p.m.)
Smoking is prohibited inside all guest staterooms and on stateroom verandahs. Guests found smoking in their staterooms or on their verandahs will be charged a \$250 stateroom recovery fee.

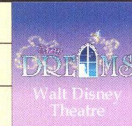
Walt Disney Theatre

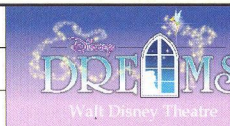


Theatrical performances may use artificial fog, strobe lights, pyrotechnics and other special effects. For the safety of our performers and the comfort of those around you, the use of any photography or video recording device or any electronic equipment is prohibited.

Verandah Safety

Please do not leave any combustible materials on your balcony when not present in your stateroom for safety reasons.

Morning	8:30	8:45	9:00	9:15	9:30	9:45	10:00	10:15	10:30	10:45	11:00	11:15	11:30	11:45	12:00	12:15	12:30	12:45	1:00	1:15	1:30
FUNNEL VISION	Dumbo (G) Funnel Vision						The Incredibles (PG) Funnel Vision						Farewell Deck Party Funnel Vision								
BUENA VISTA THEATRE	Brave (PG) Duration: 1 Hour 41 Minutes						Maleficent (PG) Duration: 1 Hour 37 Minutes						Many Poppins (PG) Duration: 2 Hours 13 Minutes								
CHARACTERS	Peter Pan Lobby Atrium (P)						Mickey & Friends Lobby Atrium						Farewell Deck Party Deck Stage								
FUN FOR ALL AGES	Toddler Time It's a Small World Nursery		Morning Show Promenade Lounge		Barcelona: City of Contrasts Featuring Charles Richardson Animator's Palate			Dreams Dance Class Fathoms		Bingo Pre Sales Fathoms	Could Go Jackpot BINGO Fathoms		Captain's Signing White Caps								
	Walk A Mile Preludes		Mickey's Puzzle Playtime Disney's Oceaneer Club		Become Iron Man! Disney's Oceaneer Club		Barcelona: City of Contrasts Animator's Palate														
ADULTS	Friends of Bill W. Keys		Boot Camp Senses Spa Fitness Center		Book Exchange Cove Cafe				Captain vs. Cruise Director D Lounge		Club 18*21 Brunch Lumiere's		Champagne Tasting (21+) Keys		Disney Vacation Club Group Preview D Lounge						
VIBE 14-17 YEARS OLD	Coffee Break						GOTCHA						Craft Corner			Youth Activities Open House					
EDGE 11-14 YEARS OLD	Youth Activities Open House												Animation Cells								
OCEANEER LAB 3-12 YEARS OLD	Hats Off to Peter Pan												Lunch			Open House					
OCEANEER CLUB 3-12 YEARS OLD	Youth Activities Open House						Mickey's Puzzle Playtime		Become Iron Man!		Story Time with Belle		Lunch			Memory Wall					

Afternoon	1:45	2:00	2:15	2:30	2:45	3:00	3:15	3:30	3:45	4:00	4:15	4:30	4:45	5:00	5:15	5:30	5:45	6:00	6:15	6:30	6:45
FUNNEL VISION	Up (PG) Funnel Vision						WALL-E (G) Funnel Vision						Brave (PG) Funnel Vision								
BUENA VISTA THEATRE	Maleficent (PG) Duration: 1 Hour 37 Minutes						Disneynature: Bears (G) Duration: 1 Hour 25 Minutes														
CHARACTERS	Goofy Dk 4, Mid						Minnie Dk 4, Mid						Mickey Dk 4, Mid								
FUN FOR ALL AGES	Disney Behind the Scenes Animator's Palate			Bingo Pre Sales Fathoms			FINAL Jackpot BINGO Fathoms			Ballroom Dancing Fathoms											
	Towel Folding D Lounge		Talent Show Rehearsals D Lounge		Dance Class - Final Review Fathoms			Crafts: Origami Creations Promenade Lounge			Toddler Time Promenade Lounge		Live Music with Duo Azucar Lobby Atrium								
ADULTS	Ultimate Disney Trivia O'Gills Pub		Crafts: Button Making O'Gills Pub			Animation - Simba O'Gills Pub															
VIBE 14-17 YEARS OLD	Youth Activities Open House						Dodgeball						ESPN Dream Team Draft Day			Teen Choice					
EDGE 11-14 YEARS OLD	Scavenger Hunt						Youth Activities Open House						Dodgeball								
OCEANEER LAB 3-12 YEARS OLD	Youth Activities Open House						4th Pigs Pasta Palace		Friendship Rocks Prep		Friendship Rocks		Dinner								
OCEANEER CLUB 3-12 YEARS OLD	Memory Wall		Game Challenge		Become Iron Man!		Friendship Rocks Prep		Friendship Rocks		Dinner										

Evening	7:00	7:15	7:30	7:45	8:00	8:15	8:30	8:45	9:00	9:15	9:30	9:45	10:00	10:15	10:30	10:45	11:00	11:15	11:30	11:45	12:00
FUNNEL VISION	High School Musical 3: Senior Year (G) Funnel Vision						Toy Story 3 (G) Funnel Vision														
BUENA VISTA THEATRE	Maleficent (PG) Duration: 1 Hour 37 Minutes						Maleficent (PG) DOLBY 3D Duration: 1 Hour 37 Minutes														
CHARACTERS	Mickey Dk 4, Mid						Minnie Dk 4, Mid														
FUN FOR ALL AGES	Officer Pin Trading Preludes		Family Talent Show D Lounge																		
	Family Dance Party Promenade Lounge			Ballroom Dancing Fathoms			Live Music with Midtown Promenade Lounge			Live Music with Midtown Promenade Lounge											
ADULTS	Pub Quiz #4 O'Gills Pub		Music from Around the World Keys			Club 18*21 - Farewell O'Gills Pub			Adult Variety: Stringfever Fathoms		Cruise Staff Farewell Fathoms		DJ Matt Fathoms								
VIBE 14-17 YEARS OLD	Teen Choice		Smoothie Hour			Bring It!			Zombified Premiere		Final Farewell		Mix and Match								
EDGE 11-14 YEARS OLD	Gender Wars		Talent Show			Know Your Counselor?		Final Farewell Slideshow		Final Farewell											
OCEANEER LAB 3-12 YEARS OLD	Magic Show		Super Sloppy Science																		
OCEANEER CLUB 3-12 YEARS OLD	Glow Jam		Toy Story Boot Camp			Dance Party															

Symbol for activities that will be repeated during the cruise

Fold along the dotted lines and take me with you so you don't miss any of the fun!

FOLD

IN THE SPOTLIGHT SERIES
SOLVE IT SERIES
JUMP UP! SERIES
CREATE & REVEAL SERIES
OPEN HOUSE
CLUBHOUSE SERIES
STORYBOOK SERIES

BUENA VISTA THEATRE

Deck 5, Aft

DOLBY 3D



8:30 a.m. Duration: 1 hr 41 mins Rating: PG	10:30 a.m. & 3:30 p.m. Duration: 1 hr 37 mins Rating: PG	12:45 p.m. Duration: 2 hr 13 mins Rating: PG	6:00 p.m. & 8:15 p.m. Duration: 1 hr 25 mins Rating: G	10:45 p.m. Duration: 1 hr 37 mins Rating: PG
---	--	--	--	--

Character Appearances

PETER PAN

Lobby Atrium (P) - 9:30 a.m.

MICKY MOUSE

Deck 4, Midship
6:00 p.m. & 7:30 p.m.

RAPUNZEL

Lobby Atrium (P) - 10:00 a.m.

TIL WE MEET AGAIN

Lobby Atrium - 10:15 p.m.

MICKY & FRIENDS

Lobby Atrium - 11:00 a.m.

GOOFY

Deck 4, Midship - 4:30 p.m.

PLUTO

Deck 4, Midship - 5:00 p.m.

MINNIE MOUSE

Deck 4, Midship
5:30 p.m. & 8:00 p.m.



(P) - Portside, (S) - Starboard Side

Don't forget your Camera to capture those Magical Moments!
Check here each day for Character appearances.
For detailed Character appearance information see the Character Information Board in the Lobby Atrium.
Meet-and-Greets will be advertised for the length of time the line will be open. To avoid disappointment, please meet at start time of appearances.

YOUTH ACTIVITIES THEMED EXPERIENCES

CLUBHOUSE SERIES focuses on movement and features content which appeals to younger children.

JUMP UP! SERIES includes large group games & movement-oriented activities.

IN THE SPOTLIGHT SERIES focuses on children's stage presence with lots of activities and enthusiasm.

STORYBOOK SERIES is designed with a strong connection to the Disney classic stories.

CREATE & INVENT SERIES will have a tactile focus allowing children to create and admire their work.

SOLVE IT! SERIES are less active, but will challenge children with problem/solutions-based activities.

YOUTH ACTIVITIES OPEN HOUSE

Activities for families, adults and children of all ages to enjoy together.

SHIP DIRECTORY

YOUTH ACTIVITIES

DISNEY'S OCEANEER CLUB	DECK 5, MID	9:30 AM - 12:00 MID
DISNEY'S OCEANEER LAB	DECK 5, MID	9:30 AM - 12:00 MID
EDGE	DECK 2, MID	10:00 AM - 12:00 MID
IT'S A SMALL WORLD NURSERY	DECK 5, AFT	8:30 AM - 11:30 PM
VIBE	DECK 10, MID	10:00 AM - 1:00 AM

POOLS

*Children under 12 years of age must have adult supervision in all pools.

AQUADUNK	DECK 10, MID	10:00 AM - 6:00 PM
AQUALAB	DECK 9, AFT	9:00 AM - 9:00 PM
GOOFY'S POOL	DECK 9, MID	9:00 AM - 6:00 PM
		8:00 PM - 10:00 PM
NEPHEWS' SPLASH ZONE	DECK 9, AFT	9:00 AM - 6:00 PM
QUIET COVE POOL (18+)	DECK 9, FWD	6:00 AM - 12:00 MID
TWIST 'N' SPOUT	DECK 9, AFT	10:00 AM - 6:00 PM

RECREATION

PORT ADVENTURES DESK	DECK 3, MID	1:00 PM - 8:00 PM
SENSES FITNESS CENTER (18+)	DECK 9, FWD	6:30 AM - 10:00 PM
WIDE WORLD OF SPORTS DECK	DECK 10, FWD	24 HOURS

GENERAL INFORMATION

BUENA VISTA THEATRE	DECK 5, AFT	SHOWTIMES
DISNEY VACATION CLUB DESK	DECK 4, MID	9:00 AM - 12:00 PM 5:00 PM - 10:00 PM
ONBOARD SALES DESK	DECK 4, MID	9:30 AM - 12:00 PM 3:00 PM - 6:00 PM 7:00 PM - 10:00 PM
FUNNEL VISION	DECK 9, MID	SHOWTIMES
GUEST SERVICES	DECK 3, MID	24 HOURS
HAIR BRAIDING	DECK 9, MID	9:00 AM - 6:00 PM
MEDICAL HEALTH CENTER	DECK 1, FWD	9:30 AM - 11:00 AM 4:30 PM - 7:00 PM
PORT & SHOPPING DESK	DECK 3, MID	
PRELUDES	DECK 4, FWD	5:30 PM - 9:00 PM
QUARTER MASTERS (ARCADE)	DECK 9, MID	24 HOURS
SENSES SPA AND SALON	DECK 9, FWD	8:00 AM - 10:00 PM
SHUTTERS PHOTO GALLERY	DECK 4, AFT	10:00 AM - 11:00 PM
WALT DISNEY THEATRE	DECK 4, FWD	SHOWTIMES

SHOPPING

MICKY'S MAINSAIL	DECK 4, FWD	9:30 AM - 11:00 PM
QUACKS	DECK 9, MID	10:30 AM - 4:00 PM
SEA TREASURES	DECK 3, FWD	12:00 PM - 11:00 PM
VISTA GALLERY	DECK 4, MID	11:00 AM - 2:00 PM 4:00 PM - 10:00 PM
WHITE CAPS	DECK 4, FWD	9:30 AM - 11:00 PM

IMPORTANT NUMBERS

Fire/Security: 7-3001
Medical EMERGENCY: 7-3000
Health Center: 7-1923

DINNER MENU

Animator's Palate : Til We Meet Again
Carioca's : Til We Meet Again
Lumiére's : Til We Meet Again
Dining Times: 6:00pm & 8:30pm

DRINK OF THE DAY

Blue Margarita (Alcoholic)
Mango Crush (Non - Alcoholic)

WEATHER FORECAST

Today: Sunny
High: 75°F/24°C
Tomorrow: Partly Cloudy
High: 70°F/21°C

Evening Attire: Cruise Casual

DINING & LOUNGES

BREAKFAST

CABANAS	DECK 9, AFT	7:30 AM - 11:30 AM
DAISY'S DE LITES	DECK 9, AFT	7:00 AM - 9:00 AM
LUMIÈRE'S BRUNCH	DECK 3, MID	9:00 AM - 12:30 PM
PALO (FOR RESERVATIONS CALL 7-6843)	DECK 10, AFT	10:00 AM - 1:30 PM

LUNCH

CABANAS	DECK 9, AFT	11:30 AM - 3:00 PM
DAISY'S DE LITES	DECK 9, AFT	11:00 AM - 6:00 PM
LUMIÈRE'S BRUNCH	DECK 3, MID	9:00 AM - 12:30 PM
PALO (FOR RESERVATIONS CALL 7-6843)	DECK 10, AFT	10:00 AM - 1:30 PM
PETE'S BOILER BITES	DECK 9, AFT	11:00 AM - 6:00 PM
PINOCCHIO'S PIZZERIA	DECK 9, MID	11:00 AM - 6:00 PM

DINNER

ANIMATOR'S PALATE	DECK 4, AFT	6:00 PM & 8:30 PM
CARIOCA'S	DECK 3, AFT	6:00 PM & 8:30 PM
LUMIÈRE'S	DECK 3, MID	6:00 PM & 8:30 PM
PALO (FOR RESERVATIONS CALL 7-6843)	DECK 10, AFT	6:00 PM - 8:30 PM
PETE'S BOILER BITES	DECK 9, AFT	6:00 PM - 10:00 PM

LATE NIGHT SNACKS

O'GILLS PUB	DECK 3, FWD	10:45 PM - 11:45 PM
PINOCCHIO'S PIZZERIA	DECK 9, MID	9:30 PM - 12:00 MID
PROMENADE LOUNGE	DECK 3, AFT	10:45 PM - 11:45 PM

ADDED FEATURES

EYE SCREAM	DECK 9, AFT	11:00 AM - 11:00 PM
BEVERAGE STATION	DECK 9, AFT	24 HOURS
ROOM SERVICE	DIAL 7-4330	CLOSES AT 1:00 A.M.

ENTERTAINMENT - LOUNGES - BARS

Adults must be 21 and older to consume alcoholic beverages.

AFTER HOURS	DECK 3, FWD	(AFTER 9:00 PM, ADULTS ONLY)
COVE CAFE (18+)	DECK 9, MID	7:00 AM - 12:00 MID
D LOUNGE	DECK 4, MID	SHOWTIMES
FATHOMS (18+)	DECK 3, FWD	7:00 PM - 2:00 AM
FROZONE TREATS	DECK 9, AFT	11:00 AM - 8:00 PM
INTERNET CAFE	DECK 3, AFT	24 HOURS
KEYS (18+)	DECK 3, FWD	5:30 PM - 12:30 AM
O'GILLS PUB (18+)	DECK 3, FWD	12:00 PM - 12:30 AM
PRELUDES	DECK 4, FWD	5:30 PM - 9:00 PM
PROMENADE LOUNGE	DECK 3, AFT	9:00 AM - 12:00 MID
PINOCCHIO'S PIZZERIA	DECK 9, MID	9:00 AM - 12:00 MID
SIGNALS (18+)	DECK 9, FWD	9:30 AM - 10:30 PM

Public Health Advisory: Consuming raw or undercooked meats, poultry, seafood, shellfish, or eggs may increase your risk for foodborne illness, especially if you have certain medical condition.



'Til We Meet Again
The world-famous Disney Characters and some of your new friends from the Disney Magic™ stage shows bid you a charming farewell.
10:15 p.m.

BARCELONA

SHOPPING MAP

AT A GLANCE

Capital:

Madrid

Location:

Eastern Spain

Population:

1,620,943 (2012)

Language:

Catalan, Castillion – all versions of Spanish

Currency:

Euro

Banking:

Monday - Friday, 8:30am - 2:00pm
Saturday from 8:30am - 1:00pm
Hours are shorter in the Summer,
ATM machines are available outside
every bank and throughout city

Post Office:

Main post office is open
Monday - Saturday 8:30am - 9:30pm

Transportation:

Taxis are available

Shopping Hours:

Most stores are open Monday to Saturday
from 10:00 am to 2:00 pm and then from
5:00 pm to 8:00pm. Some of the larger
department stores do not observe Siesta
and remain open all day. All stores
close on Sunday except for some of the
souvenir stores on La Rambla.

Browse your Destination Guide
(found in your stateroom)
for more details.

PORT ADVENTURERS...

Check your ticket for the correct meeting time and location of your tour. Your Port Adventures Team will direct you to transportation.

DON'T FORGET YOUR...

Photo ID and Key to the World Card as well as Cash and/or Credit Cards. Do you have your VIP cards?



CHANNEL 26-6...

Watch channel 26-6 for insider tips on how to spend your free time, before or after your tour and where to find the best local goods ashore! Stop by Gemma's desk for more information to help create the best experience for you and your family!

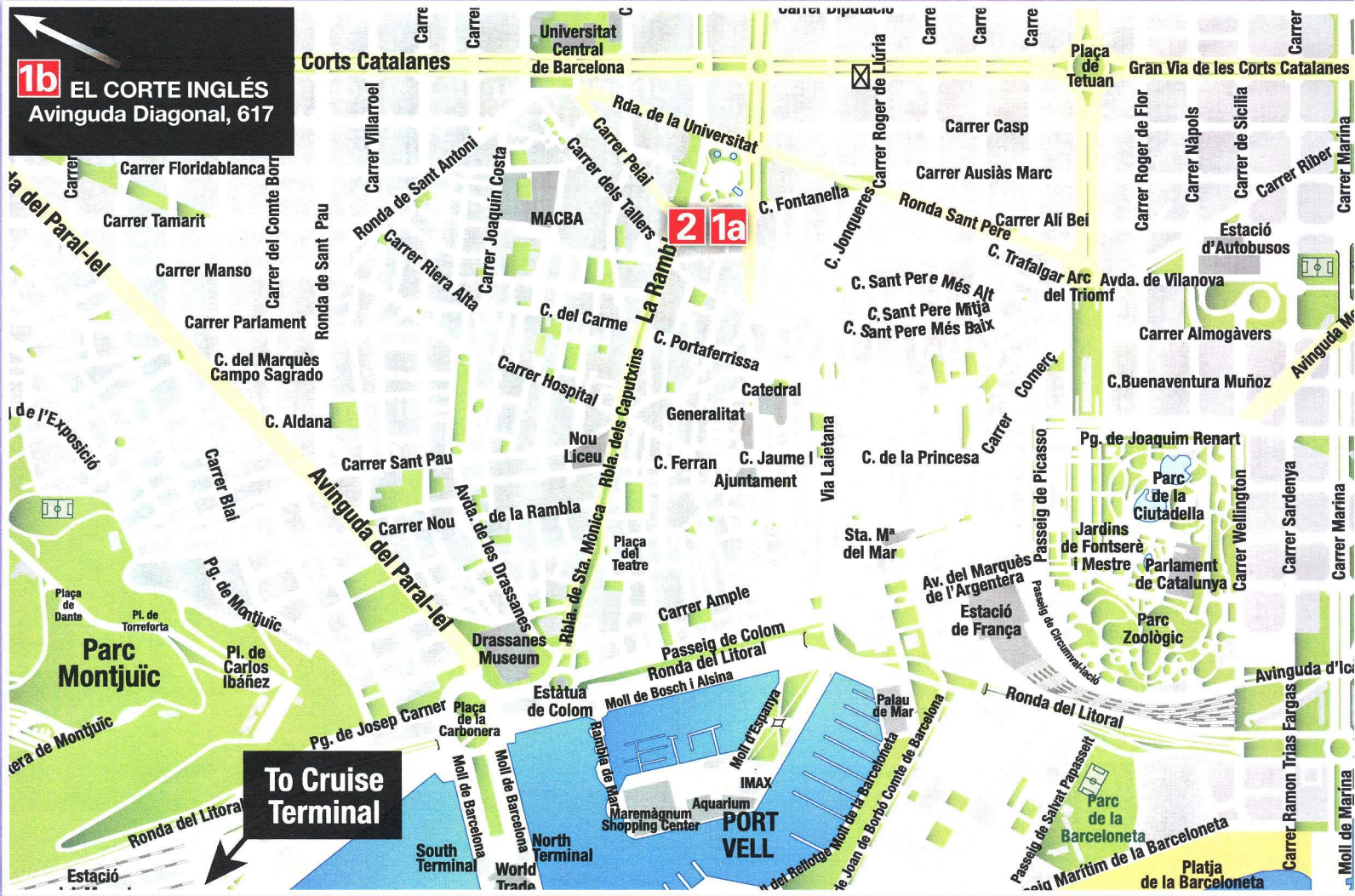
SHOPPING GUIDE



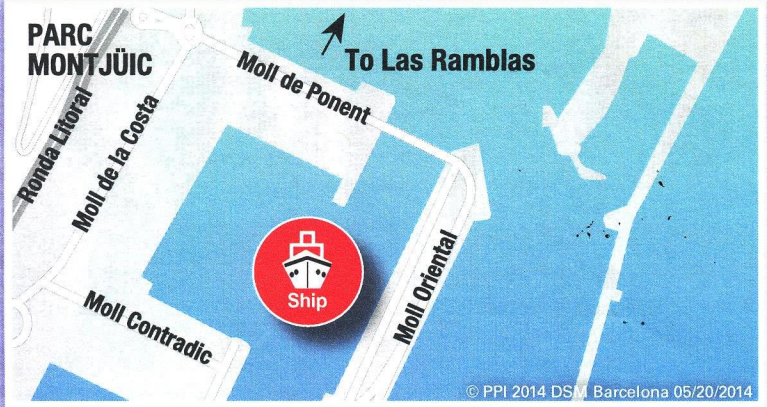
PORT SHOPPING MAP

Barcelona

1b EL CORTE INGLÉS
Avinguda Diagonal, 617



To Cruise Terminal



© PPI 2014 DSM Barcelona 05/20/2014



LOOK FOR THE ALL ASHORE LOGO FOR YOUR RECOMMENDED AND GUARANTEED STORES!

All Ashore



1a EL CORTE INGLÉS

Spain's Leading Department Stores

- With over 80 stores throughout Spain and Portugal
- Located in Plaça de Catalunya, in the city center and well connected to the port
- Fashion accessories, jewelry, perfumes, cosmetics, souvenirs, electronics and groceries
- Visit our wonderful terrace in the Cafeteria, with one of the most spectacular views of Barcelona, for a complimentary glass of Spanish wine with an exquisite tapa
- Present your passport at the Tourist Information Desk and receive a 10% reward card
- Enjoy the comfort of a complete luxury shopping experience in Spain

1b EL CORTE INGLÉS


Spain's Leading Department Stores

- Visit our second location at Avinguda Diagonal, 617 for a widest selection of national and international brands in more than 80 departments

2 HARD ROCK CAFE BARCELONA

Authentic Experiences that Rock

- Located in Plaça Catalunya, 21
- Experience an electrifying vibe amongst our jaw dropping memorabilia
- Enjoy a legendary menu, great food and drinks
- Visit our Rock Shop for souvenirs, t-shirts and collectible gifts
- Friendly staff and great environment for the entire family



Present this coupon
and receive
a complimentary
souvenir with
30€ purchase
in the Rock Shop.

Offer expires 12/30/2014. Not valid with other offers,
one per person per visit. Valid only at Barcelona location.

VAT REFUND PROGRAM Value Added Tax (VAT) is a tax refund program in which non-European Union citizens may be entitled to reclaim a portion or all of the tax paid for items purchased in participating stores. Each store's participation in the VAT refund program is discretionary. In most cases, VAT is already added to the purchase price. Please note that regulations and conditions governing the refund of VAT are subject to change. It is the responsibility of the cruise ship guest to inquire about a store's VAT refund program participation and if their purchase qualifies. For information about participating stores listed on this map, please see your Shopping Guide.



AN OVERVIEW OF BARCELONA

Barcelona is the second largest Spanish city in population and the principal industrial and commercial center of the country. The chief manufactures are textiles, precision instruments, machinery, railroad

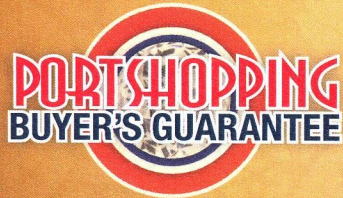
equipment, paper, glass, and plastics. Barcelona is a major Mediterranean port and the financial and publishing center of Spain.

Barcelona Province, the most populous and industrialized of the Spanish provinces, is mountainous, with fertile plains and a low, sandy coast. Agricultural products include cork, olives, grains, vegetables, grapes, almonds, oranges, and peaches. Cement and textiles are the major manufactures, and lignite and potash are mined.

The oldest section of the city of Barcelona, formerly enclosed by walls, was built on the harbor and is traversed by the Rambla, a paved thoroughfare extending from the harbor to the Plaza de Cataluña, the focal point of the city. The streets of the old section are narrow and crooked; in the newer sections they are wide and straight, and the buildings are modern. The Picasso Museum located at Montcada 15-19 is particularly strong on Picasso's early work. Displays include childhood sketches, pictures from the beautiful Rose and Blue periods, and the famous 1950s Cubist variations on Velázquez's Las Meninas (Ladies-in-Waiting). Since then it has been continuously inhabited, and, as headquarters first of the Roman Empire and then of the Roman Catholic Church, it has had an immense impact on the world.

IN CASE OF EMERGENCY...

Barcelona Port Agent:
 Port Agent – P&B Cruise and Yacht Management Division
 Via Laietana No. 33 P 3a 2a, 08003, Barcelona, Spain
 Direct Email: barcleonacruises@cruises.perezycia.com
 Alternate Email: cruisesandyachts@cruises.perezycia.com
 Call: 011+34-(934)-817310 Fax: 011+34-(934)-817312
 Operations Department Agent – Jr Garcia
 Call: 011+34-(934)-437900 Fax: 011+34-(934)-432721
 Cell: 011+34-(687)-817305 011+34-(672)-220451
 Operations Manager Barcelona – Alodia Avellaneda
 E-mail a.avellaneda@bcn.perezycia.com
 Call: 011+34-(934)-437905/0 Fax: 011+34-(934)-432721
 Cell: 011+34-(636)-827-094 011+34-(619)-219913
 Manager Cruises and Yachts Division - Nuria Codina
 Email nuria.codina@cruises.perezycia.com
 Call: 011+34 (934)-817315 Cell: 011+34 (616)-952715



Shop with confidence at each of the recommended stores. All stores listed on the map have paid a promotional fee and given Disney Cruise Line guests a Buyer's Guarantee valid for 60 days after purchase. This guarantee is valid for repair or exchange. Please note the following conditions that apply to the guarantee: Guest negligence or buyer's regret is excluded. Only appraisals from independent, accredited graduate gemologists not affiliated with any retail jeweler will be considered. Electronics and watches requiring service must be returned by the consumer to the respective manufacturer. All purchases, including fragile items, must be checked before leaving the store. Do not mail merchandise without prior authorization. Guests are responsible for postage and appraisal costs. PPI Group, 6261 NW 6th Way, Suite 100, Ft. Lauderdale, FL 33309, Customer Service: 1.888.774.4768 or 954.377.7777, email: Service@ppigroup.com
 European guests may contact: rcentofanti@ppigroup.com, +39 338 8687581.